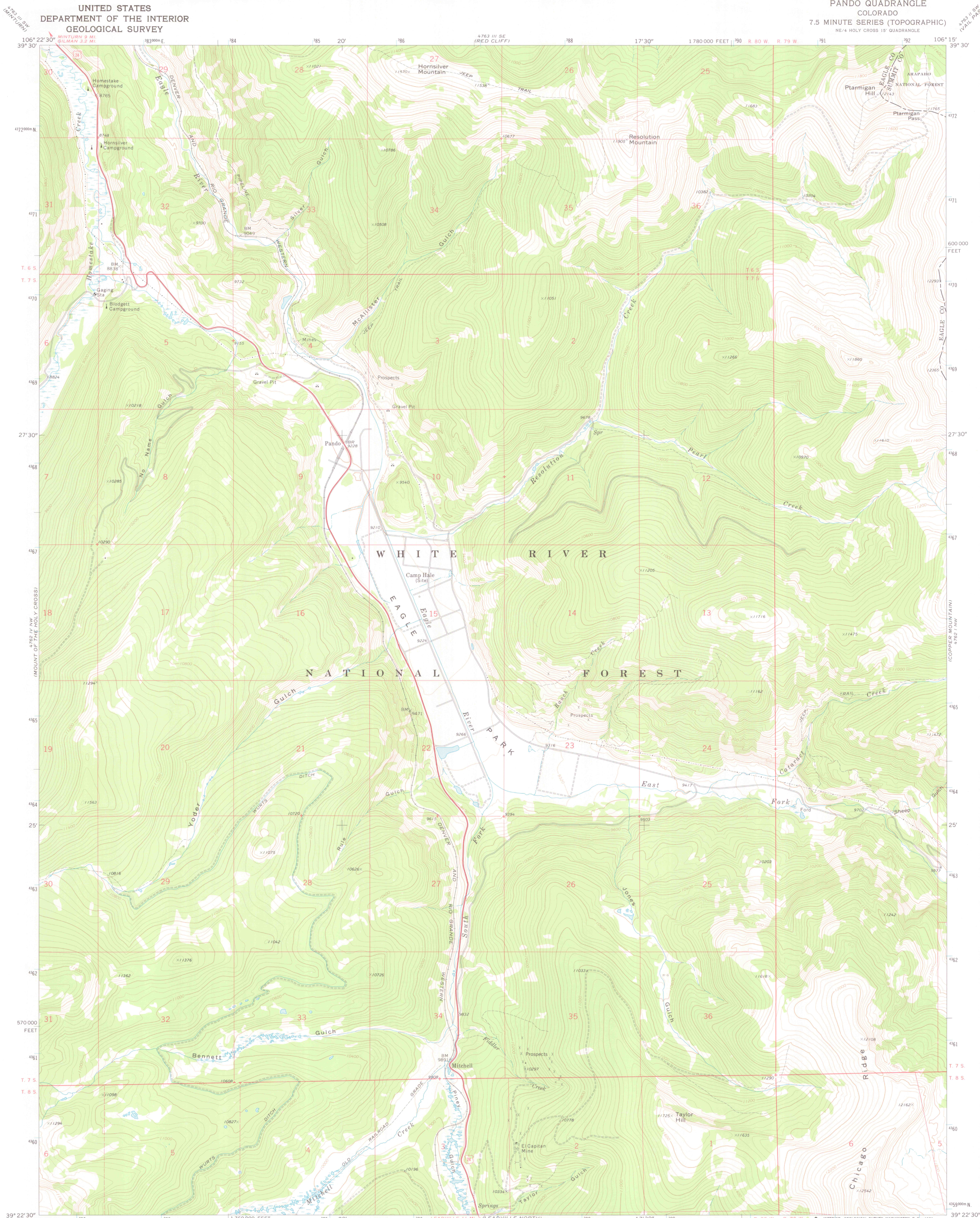
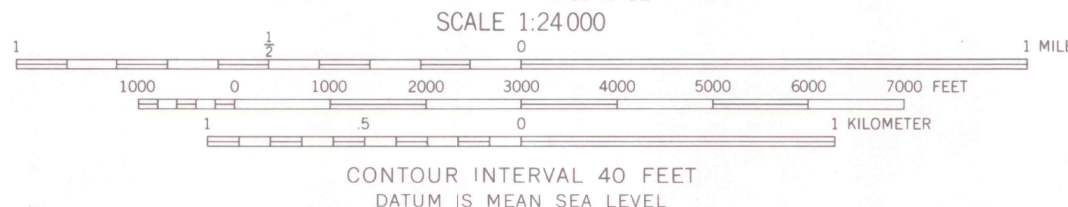
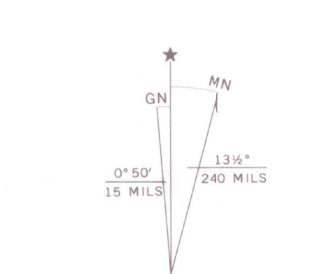


UNITED STATES  
DEPARTMENT OF THE INTERIOR  
GEOLOGICAL SURVEY

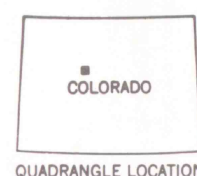
PANDO QUADRANGLE  
COLORADO  
7.5 MINUTE SERIES (TOPOGRAPHIC)  
NE 1/4 HOLY CROSS 15' QUADRANGLE



Mapped, edited, and published by the Geological Survey  
Control by USGS and USCGS  
Topography by photogrammetric methods from aerial  
photographs taken 1968. Field checked 1970  
Polyconic projection. 1927 North American datum  
10,000-foot grid based on Colorado coordinate system,  
central zone  
1000-meter Universal Transverse Mercator grid ticks,  
zone 13, shown in blue  
Where omitted, land lines have not been established  
or are not shown because of insufficient data



OFFICE COPY  
LIBRARY USE ONLY



ROAD CLASSIFICATION  
Primary highway, hard surface  
Secondary highway, hard surface  
Unimproved road  
Interstate Route  
U.S. Route  
State Route



PANDO, COLO.  
NE 1/4 HOLY CROSS 15' QUADRANGLE  
N3922.5-W10615.75

DEC 06 2000

AMS 4762 IV NE-SERIES V877

THIS MAP COMPLIES WITH NATIONAL MAP ACCURACY STANDARDS  
FOR SALE BY U.S. GEOLOGICAL SURVEY, DENVER, COLORADO 80225, OR WASHINGTON, D.C. 20242  
A FOLDER DESCRIBING TOPOGRAPHIC MAPS AND SYMBOLS IS AVAILABLE ON REQUEST

G3700  
S24  
G4

Superceded