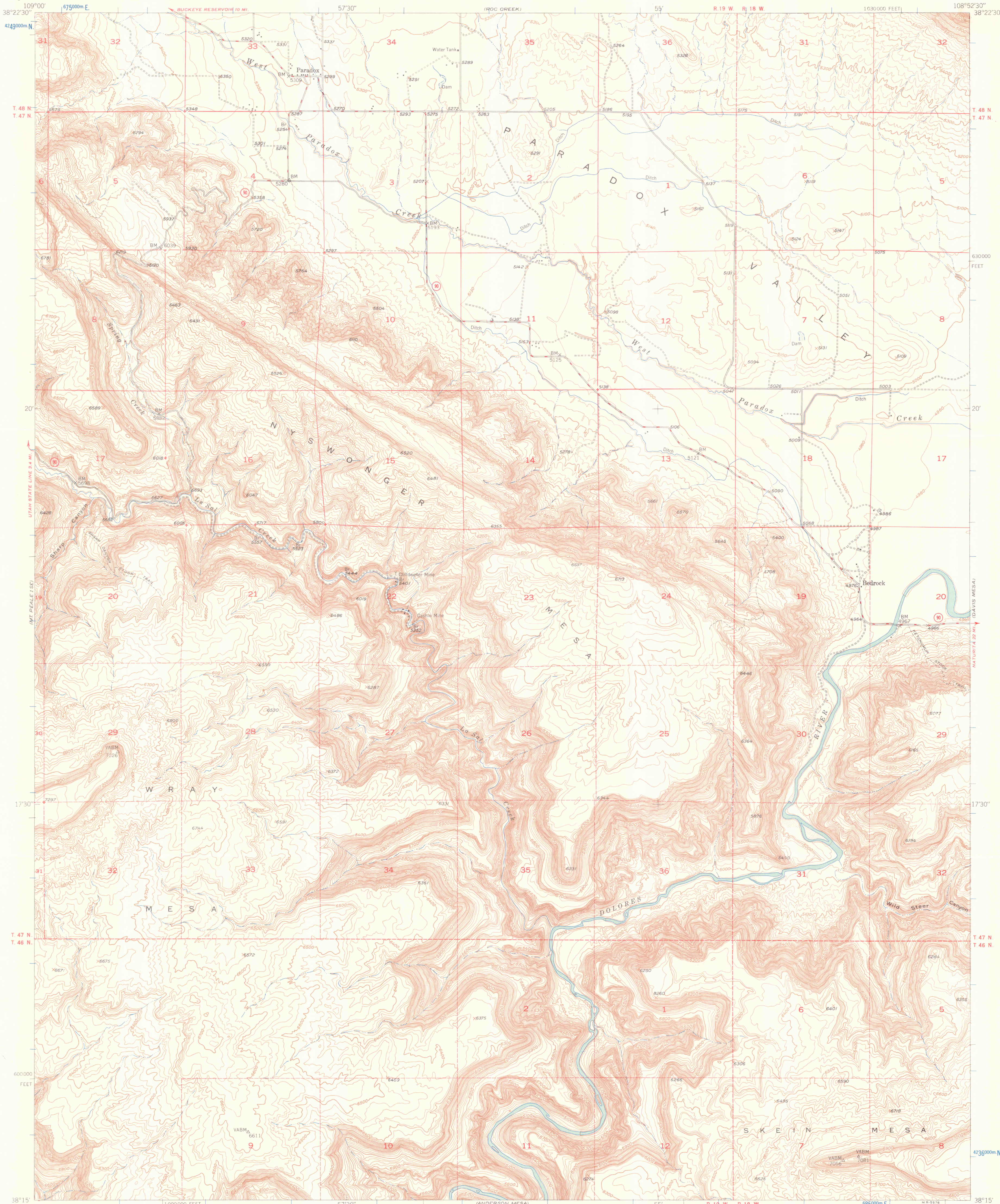


UNITED STATES  
DEPARTMENT OF THE INTERIOR  
GEOLOGICAL SURVEY

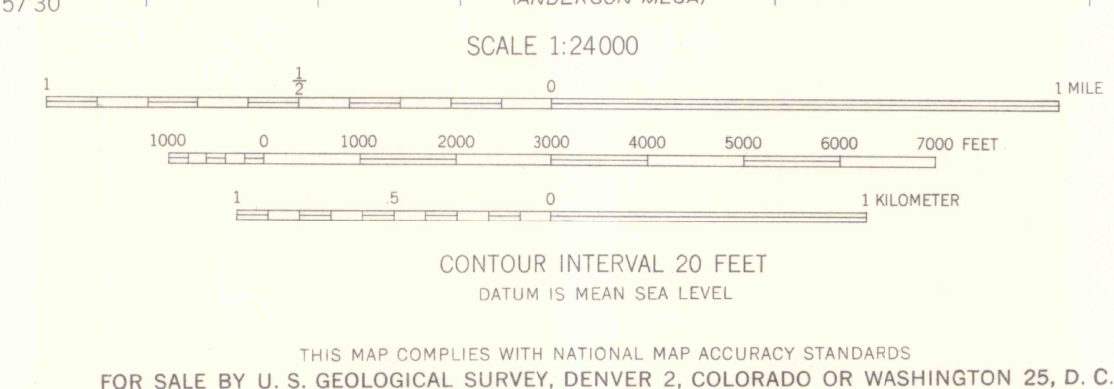
UNITED STATES  
ATOMIC ENERGY COMMISSION

PARADOX QUADRANGLE  
COLORADO-MONTROSE CO.  
7.5 MINUTE SERIES (TOPOGRAPHIC)



Mapped, edited, and published by the Geological Survey  
Control by USGS and USC&GS  
Topography from aerial photographs by multiplex methods  
Aerial photographs taken September 1947. Field check, 1948  
Polyconic projection. 1927 North American datum  
10,000-foot grid based on Colorado coordinate system,  
south zone  
Dashed land lines indicate approximate location  
Land lines unsurveyed in part of T.46N.-R.19W.  
1000-meter Universal Transverse Mercator grid ticks,  
zone 12, shown in blue

TRUE NORTH  
MAGNETIC NORTH  
APPROXIMATE MEAN  
DECLINATION, 1948



DEPT. OF GEOLOGY  
COLO. SCHOOL MINES  
Reference Collection

ROAD CLASSIFICATION  
HARD-SURFACE ALL-WEATHER ROADS DRY WEATHER ROADS  
Heavy-duty - CLANEIS LANE Improved dirt - CLANEIS LANE  
Medium-duty - CLANEIS LANE Unimproved dirt - CLANEIS LANE  
Loose-surface, graded, or narrow hard-surface - CLANEIS LANE  
U. S. Route State Route

PARADOX, COLO.  
N3815-W10852.5/7.5  
1948

MAY 29 1987  
MAP ROOM  
ARTHUR LAKES LIBRARY