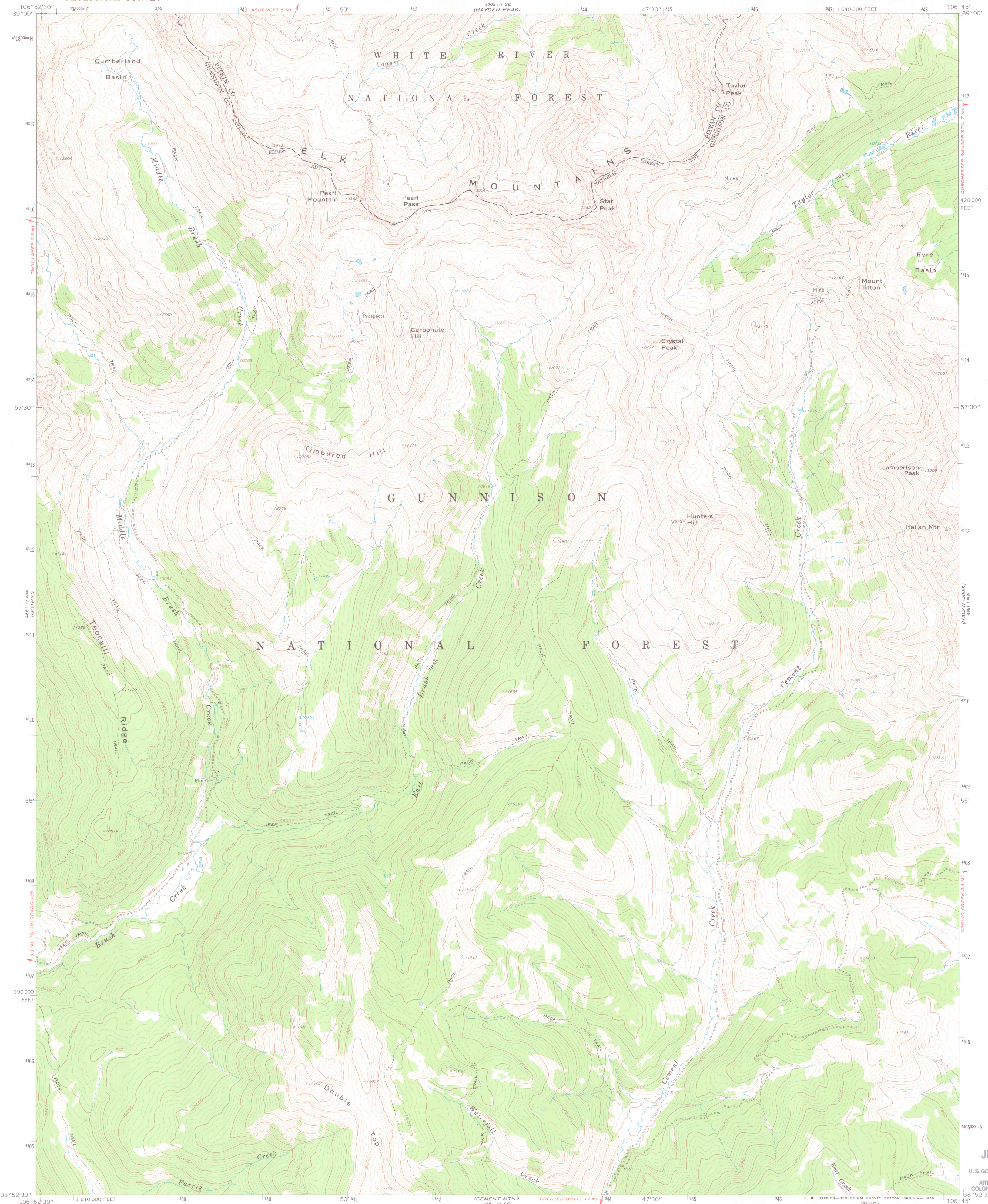
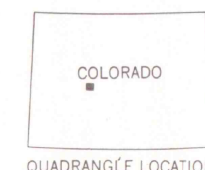
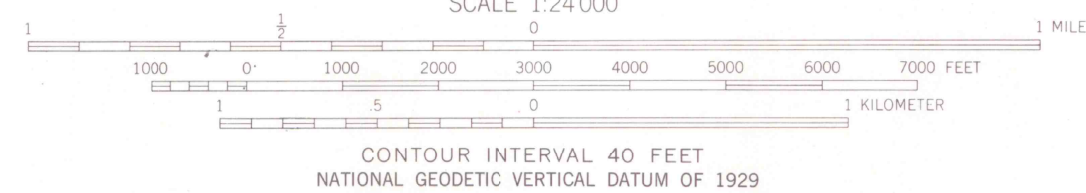
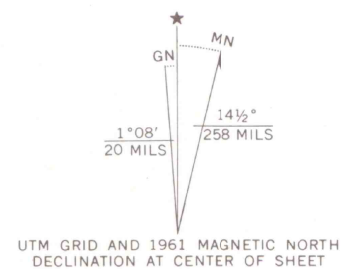


UNITED STATES  
DEPARTMENT OF THE INTERIOR  
GEOLOGICAL SURVEY

PEARL PASS QUADRANGLE  
COLORADO  
7.5 MINUTE SERIES (TOPOGRAPHIC)



Maped, edited, and published by the Geological Survey  
Control by USGS and USC&GS  
Topography by photogrammetric methods from aerial  
photographs taken 1958. Field checked 1961  
Polyconic projection. 1927 North American datum.  
10,000-foot grid based on Colorado coordinate system, central zone  
1000-meter Universal Transverse Mercator grid ticks,  
zone 13, shown in blue  
Certain land lines are omitted because of insufficient data  
To place on the predicted North American Datum 1983  
move the projection lines 5 meters north and  
52 meters east as shown by dashed corner ticks



ROAD CLASSIFICATION  
Unimproved dirt -----

PEARL PASS, COLO.

N3852.5-W10645.7/7.5  
1961  
DMA 4661 IV NE-SERIES V877

THIS MAP COMPLIES WITH NATIONAL MAP ACCURACY STANDARDS.  
FOR SALE BY U. S. GEOLOGICAL SURVEY, DENVER, COLORADO 80225, OR RESTON, VIRGINIA 22092  
A FOLDER DESCRIBING TOPOGRAPHIC MAPS AND SYMBOLS IS AVAILABLE ON REQUEST

There may be private inholdings within the boundaries of  
the National or State reservations shown on this map



JUL 10 1999

U. S. GOVERNMENT DEPOSITORY  
FOR MAPS  
ARTHUR LAKES LIBRARY  
COLORADO SCHOOL OF MINES

G 3700  
G 3704  
MAP ROOM  
U5  
c13