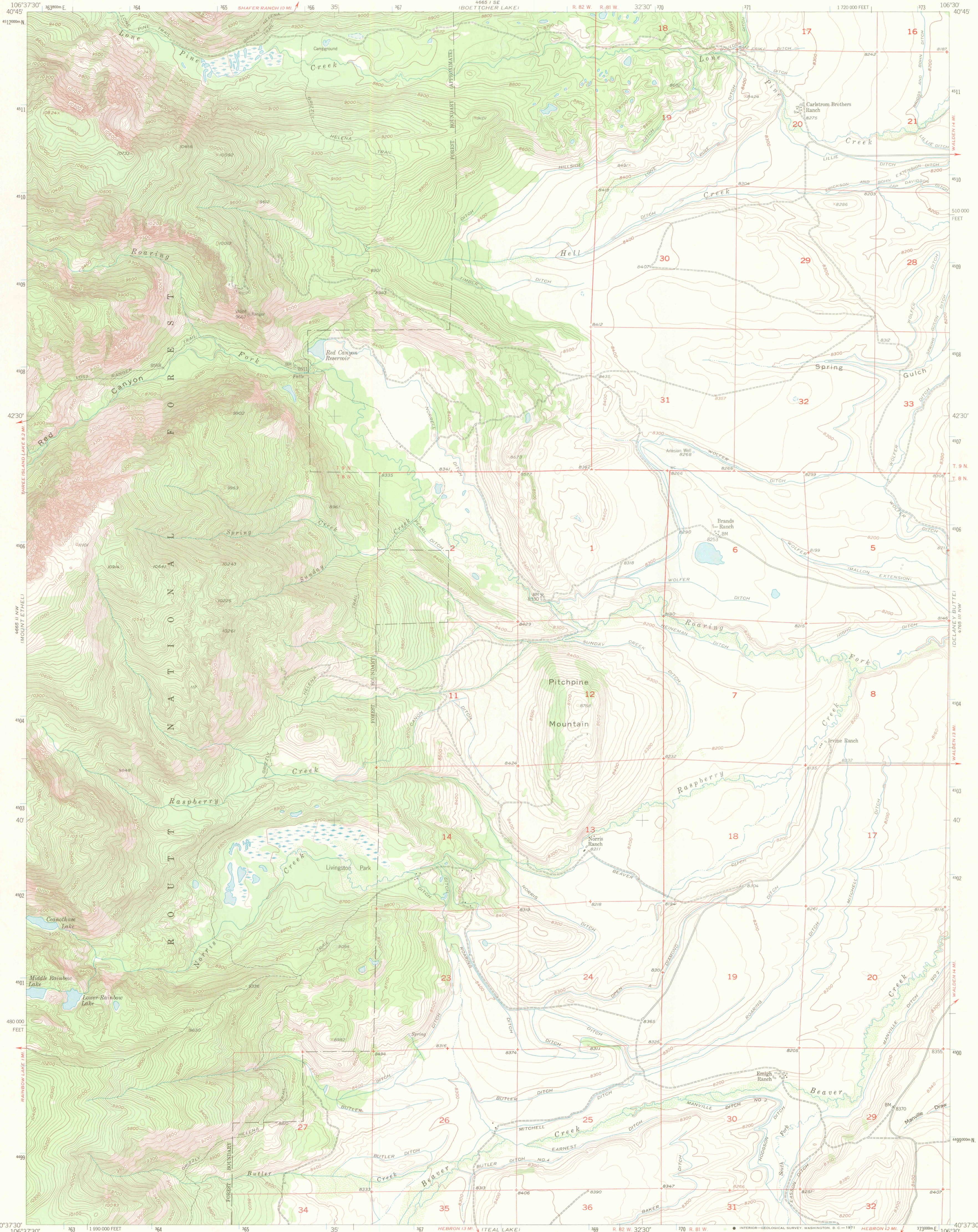
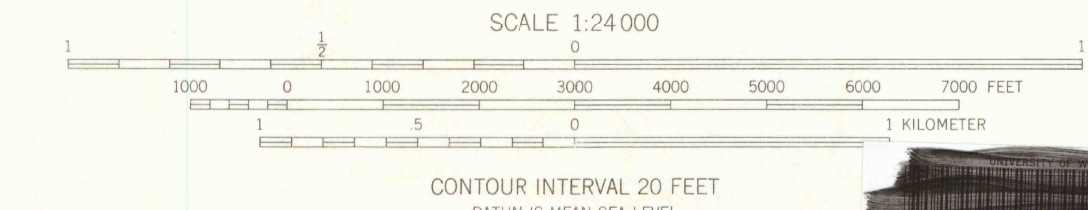
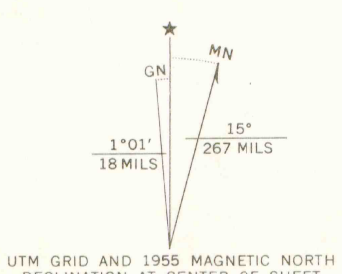


UNITED STATES
DEPARTMENT OF THE INTERIOR
GEOLOGICAL SURVEY

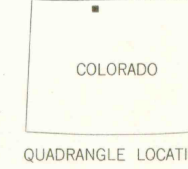
PITCHPINE MOUNTAIN QUADRANGLE
COLORADO-JACKSON CO.
7.5 MINUTE SERIES (TOPOGRAPHIC)



Mapped, edited, and published by the Geological Survey as part of the Department of the Interior program for the development of the Missouri River Basin Control by USGS and USC&GS
Topography from aerial photographs by multiplex methods
Aerial photographs taken 1952. Field check 1955
Polyconic projection. 1927 North American datum
10,000-foot grid based on Colorado coordinate system, north zone
Certain land lines are omitted in Ts. 8 and 9 N.-R. 82 W. because of insufficient data
Unchecked elevations are shown in brown
1000-meter Universal Transverse Mercator grid ticks, zone 13, shown in blue



THIS MAP COMPLIES WITH NATIONAL MAP ACCURACY STANDARDS
FOR SALE BY U.S. GEOLOGICAL SURVEY, DENVER, COLORADO 80225, OR WASHINGTON, D.C. 20242
A FOLDER DESCRIBING TOPOGRAPHIC MAPS AND SYMBOLS IS AVAILABLE ON REQUEST



DEPOSITORY MAP

SEP 29 1994

MAP COLLECTION
U OF WYOMING BOX 3006
LARAMIE, WY 82071-3006

PITCHPINE MOUNTAIN, COLO.
N4037.5-W10630.7/5
1955

AMS 4665 II NE-SERIES V877

APR 27 2004

OFFICE COPY
LIBRARY USE ONLY

G 3700
s24
.64
MAP ROOM