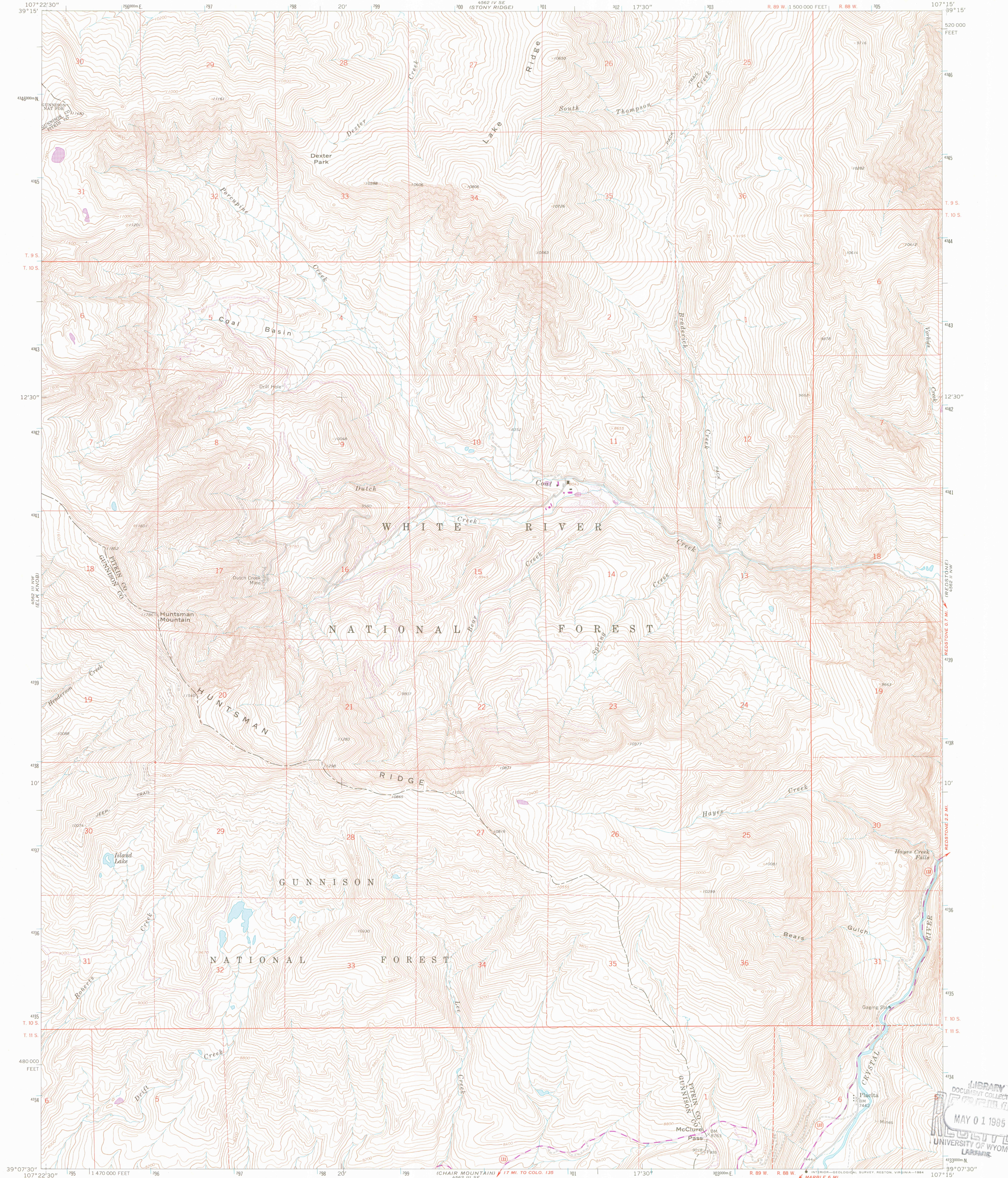
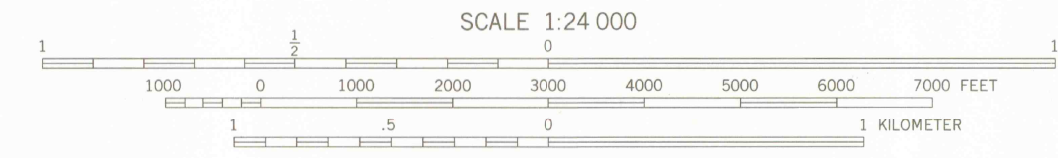
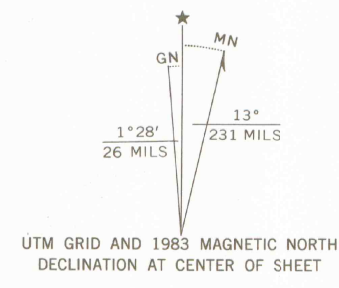


UNITED STATES  
DEPARTMENT OF THE INTERIOR  
GEOLOGICAL SURVEY

PLACITA QUADRANGLE  
COLORADO  
7.5 MINUTE SERIES (TOPOGRAPHIC)



Mapped, edited, and published by the Geological Survey  
Control by USGS and NOS/NOAA  
Topography by photogrammetric methods from aerial  
photographs taken 1962. Field checked 1963.  
Polyconic projection. 1927 North American Datum  
10,000-foot grid based on Colorado coordinate system, central zone  
1000-meter Universal Transverse Mercator grid ticks,  
zone 13, shown in blue  
Where omitted, land lines have not been established  
To place on the predicted North American Datum 1983  
move the projection lines 5 meters north and  
54 meters east as shown by dashed corner ticks  
There may be private inholdings within the boundaries  
of the National or State reservations shown on this map



OFFICE COPY  
LIBRARY USE ONLY



ROAD CLASSIFICATION  
Light-duty ———— Unimproved dirt ————  
State Route  
Secondary highway  
hard surface

GEOLOGICAL SURVEY OF WYOMING

PLACITA, COLO.  
39107-B3-TF-024  
1963  
PHOTOREVISED 1983  
DMA 4562 III NE—SERIES V877

ARTHUR LAKES LIBRARY  
COLORADO SCHOOL OF MINES  
GOLDEN, COLORADO  
THIS MAP COMPLIES WITH NATIONAL MAP ACCURACY STANDARDS  
FOR SALE BY U. S. GEOLOGICAL SURVEY, DENVER, COLORADO 80225, OR RESTON, VIRGINIA 22092  
A FOLDER DESCRIBING TOPOGRAPHIC MAPS AND SYMBOLS IS AVAILABLE ON REQUEST

LIBRARY  
DOCUMENT COLLECTION  
MAY 01 1985  
UNIVERSITY OF WYOMING  
LARAMIE

copy 2