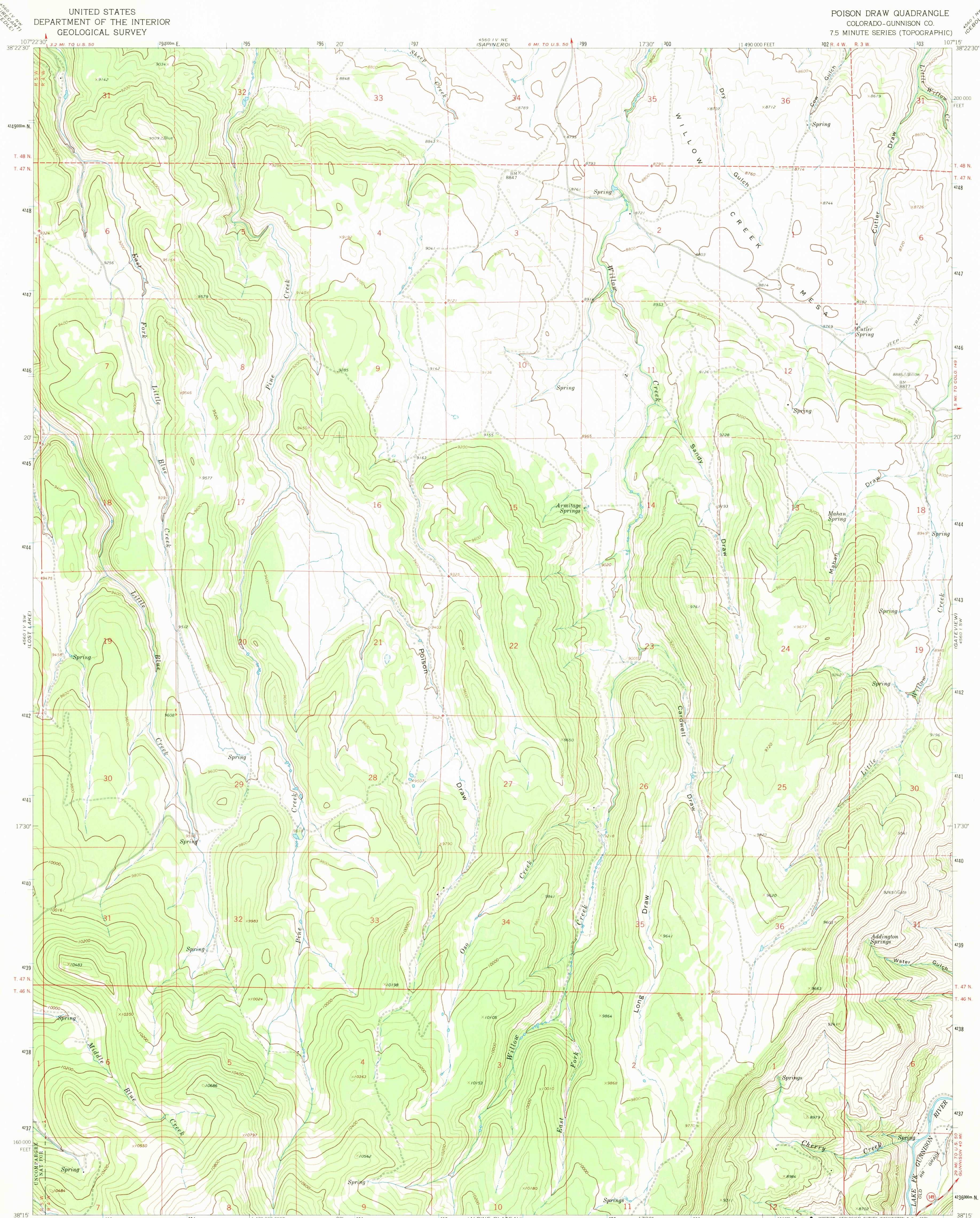


UNITED STATES
DEPARTMENT OF THE INTERIOR
GEOLOGICAL SURVEY

POISON DRAW QUADRANGLE
COLORADO-GUNNISON CO.
7.5 MINUTE SERIES (TOPOGRAPHIC)



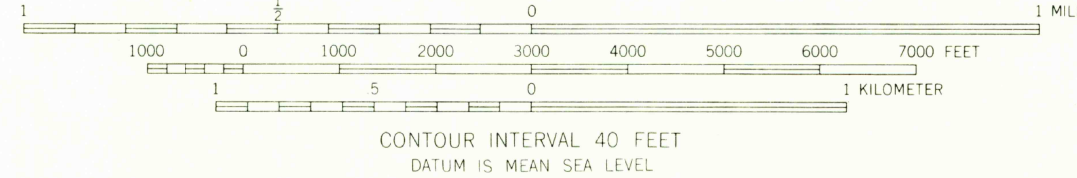
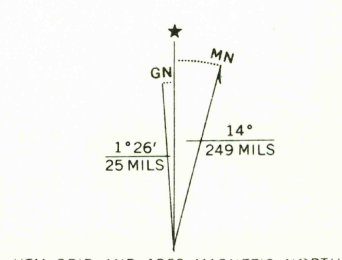
Maped, edited, and published by the Geological Survey

Control by USGS and USC&GS

Topography by photogrammetric methods from aerial
photographs taken 1962. Field checked 1963

Polyconic projection. 1927 North American datum
10,000 foot grid based on Colorado coordinate system, central zone
1000 meter Universal Transverse Mercator grid ticks,
zone 13, shown in blue

Fine red dashed lines indicate selected fence lines



THIS MAP COMPLIES WITH NATIONAL MAP ACCURACY STANDARDS
FOR SALE BY U. S. GEOLOGICAL SURVEY, DENVER, COLORADO 80225, OR WASHINGTON, D. C. 20242
A FOLDER DESCRIBING TOPOGRAPHIC MAPS AND SYMBOLS IS AVAILABLE ON REQUEST

USGS
Historical File
Topographic Division

ROAD CLASSIFICATION
Medium duty ——— Light duty ———
Unimproved dirt ———
State Route ○

U.S.G.S.
FILE COPY
TOPOGRAPHIC DIVISION

POISON DRAW, COLO.
N3815-W10715/7.5

1963

AMS 4560 IV SE-SERIES V87

DEC 23 1970