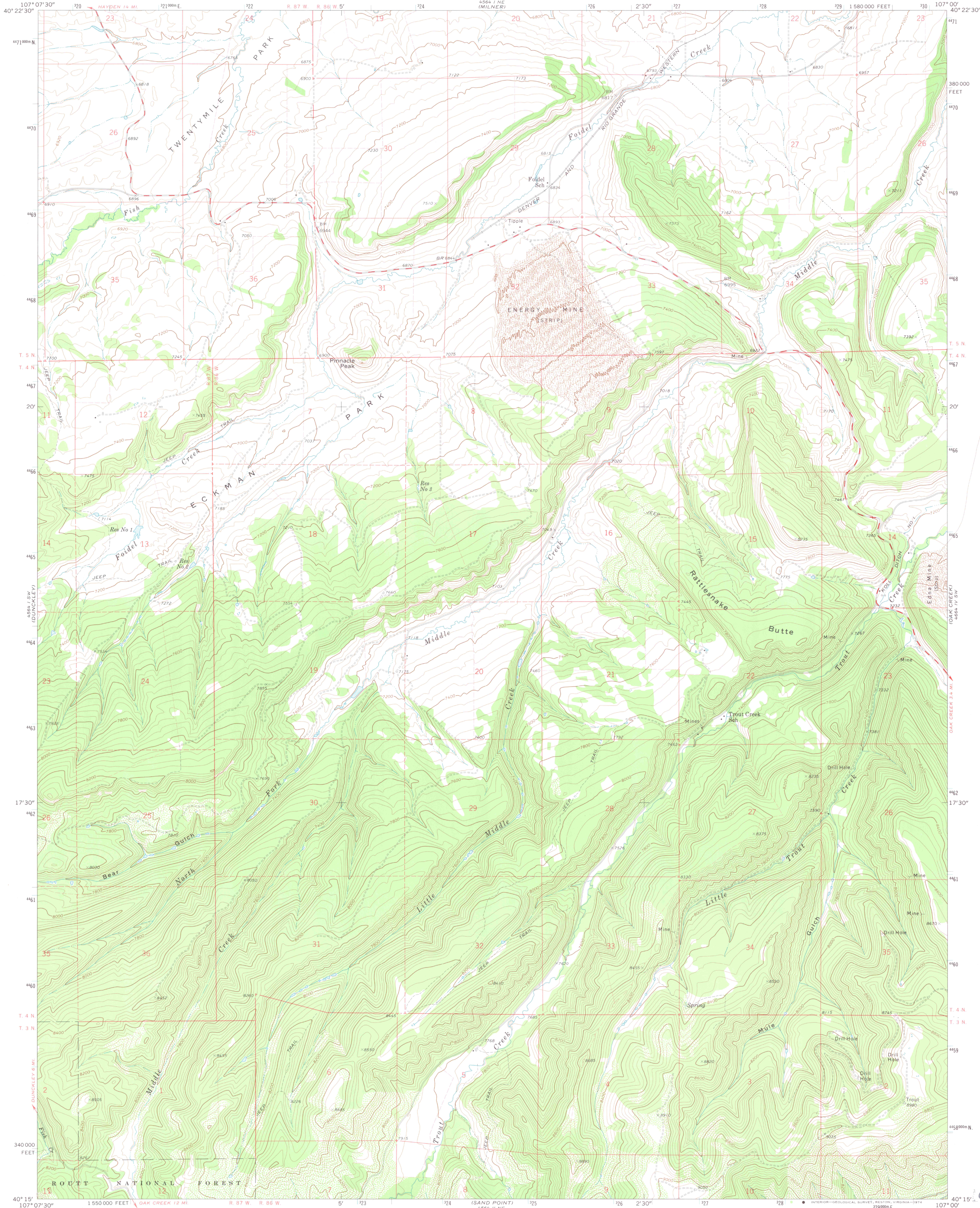


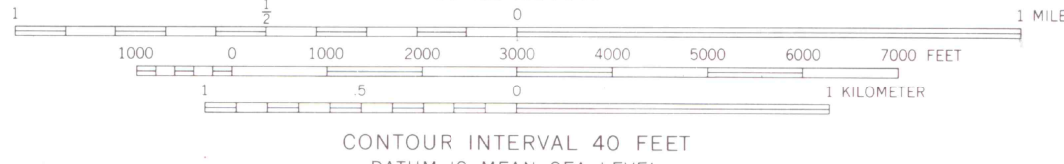
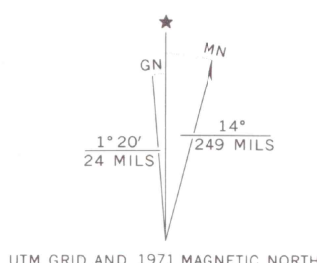
UNITED STATES
DEPARTMENT OF THE INTERIOR
GEOLOGICAL SURVEY

RATTLESNAKE BUTTE QUADRANGLE
COLORADO—ROUTT CO.
7.5 MINUTE SERIES (TOPOGRAPHIC)
SE 1/4 MOUNT HARRIS 15' QUADRANGLE



OFFICE COPY

Mapped, edited, and published by the Geological Survey
Control by USGS and USC&GS
Topography by photogrammetric methods from aerial
photographs taken 1970. Field checked 1971
Projection and 10,000-foot grid ticks: Colorado
coordinate system, north zone (Lambert conformal conic)
1000-meter Universal Transverse Mercator grid ticks,
zone 13, shown in blue. 1927 North American datum
Fine red dashed lines indicate selected fence lines



ROAD CLASSIFICATION
Primary highway, hard surface
Secondary highway, hard surface
Light-duty road, hard or improved surface
Unimproved road
Interstate Route
U. S. Route
State Route

RATTLESNAKE BUTTE, COLO.
SE 1/4 MOUNT HARRIS 15' QUADRANGLE
N4015—W10700/7.5

1971

AMS 4564 1 SE—SERIES V877

THIS MAP COMPLIES WITH NATIONAL MAP ACCURACY STANDARDS
FOR SALE BY U.S. GEOLOGICAL SURVEY, DENVER, COLORADO 80225, OR RESTON, VIRGINIA 22092
A FOLDER DESCRIBING TOPOGRAPHIC MAPS AND SYMBOLS IS AVAILABLE ON REQUEST