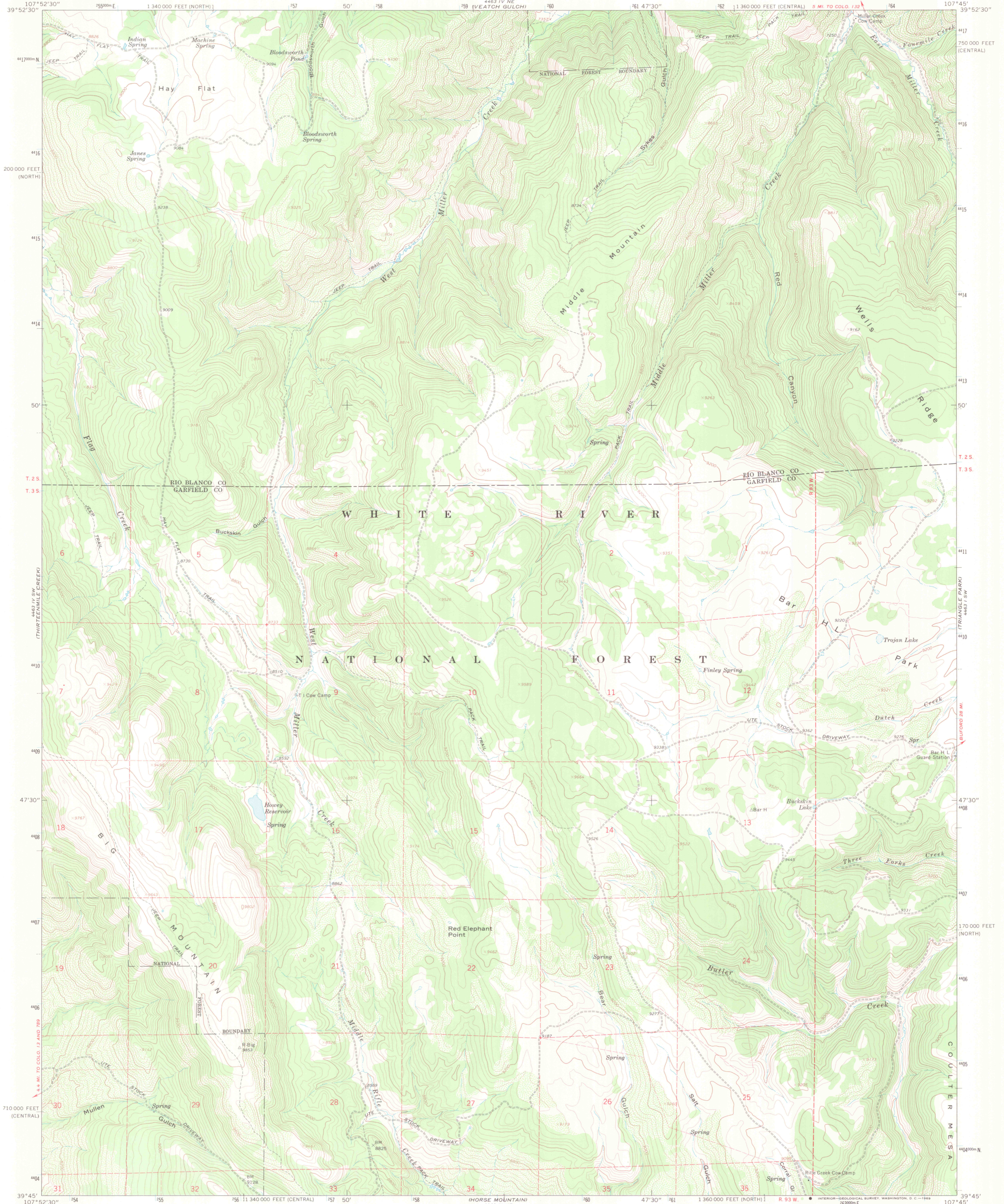


UNITED STATES
DEPARTMENT OF THE INTERIOR
GEOLOGICAL SURVEY

RED ELEPHANT POINT QUADRANGLE
COLORADO
7.5 MINUTE SERIES (TOPOGRAPHIC)



Mapped, edited, and published by the Geological Survey

Control by USGS and USC&GS

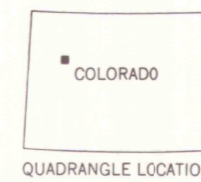
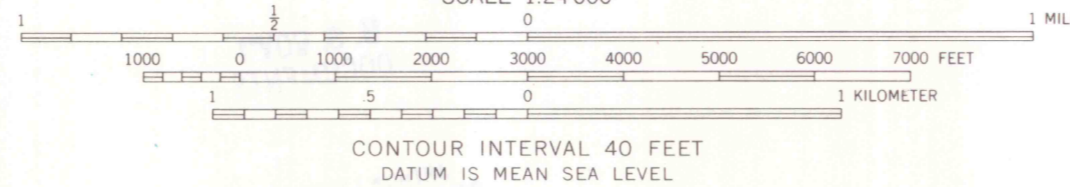
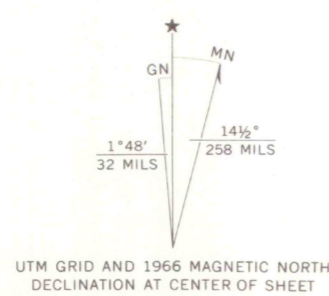
Topography by photogrammetric methods from aerial photographs taken 1964-1965. Field checked 1966.

Polyconic projection. 1927 North American datum 10,000-foot grids based on Colorado coordinate system, central and north zones

1000-meter Universal Transverse Mercator grid ticks, zone 13, shown in blue

Fine red dashed lines indicate selected fence lines

Where omitted, land lines have not been established or are not shown because of insufficient data



ROAD CLASSIFICATION
Unimproved dirt

RED ELEPHANT POINT, COLO.
N3945-W10745/7.5

1966

AMS 4463 IV SE-SERIES V877

LIBRARY USE ONLY

OFFICE COPY
C 3700
24
34
MAP ROOM