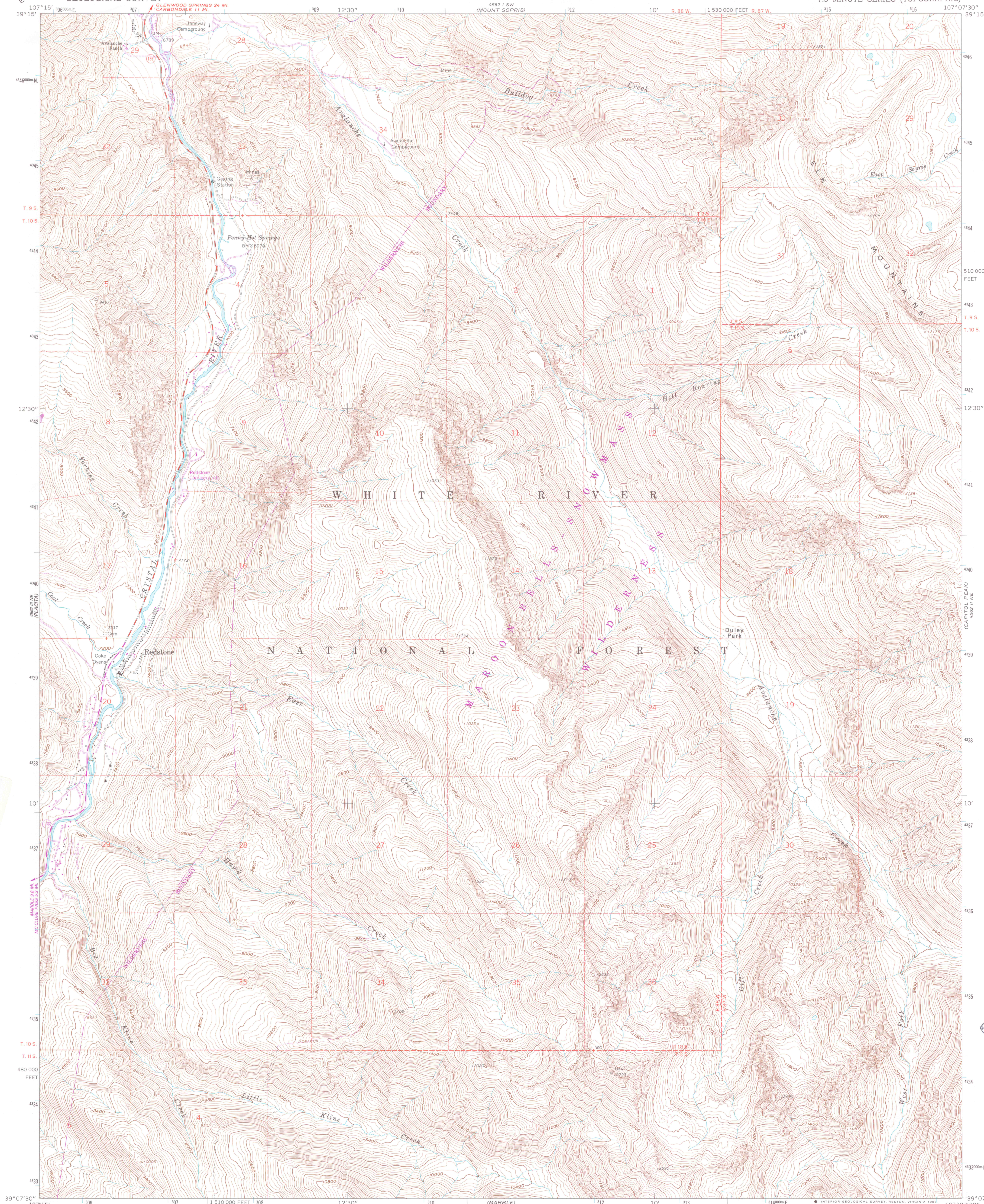


1960  
STONY RIDGE

UNITED STATES  
DEPARTMENT OF THE INTERIOR  
GEOLOGICAL SURVEY

REDSTONE QUADRANGLE  
COLORADO-PITKIN CO.  
7.5 MINUTE SERIES (TOPOGRAPHIC)

4562 I SE  
(BASALT)



Mapped, edited, and published by the Geological Survey

Control by USGS and NOS/NOAA

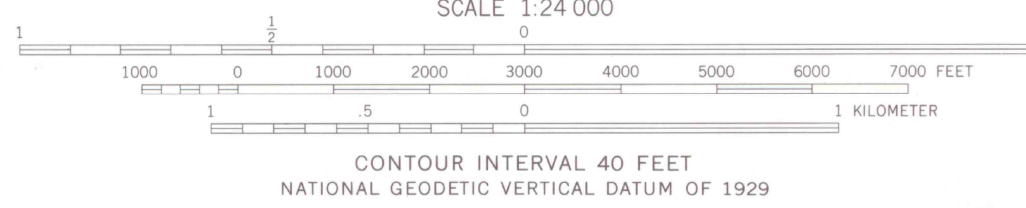
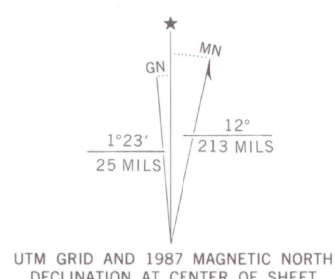
Topography by photogrammetric methods from aerial photographs taken 1958. Field checked 1960

Polycyclic projection. 1927 North American Datum 10,000-foot grid based on Colorado coordinate system, central zone 1000-meter Universal Transverse Mercator grid ticks, zone 13, shown in blue

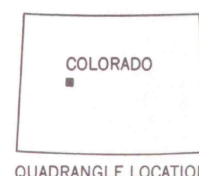
Where omitted, land lines have not been established or have been suspended

There may be private inholdings within the boundaries of the National or State reservations shown on this map

To place on the North American Datum 1983 move the projection lines 5 meters north and 53 meters east as shown by dashed corner ticks



GEOLOGY LIBRARY  
UNIVERSITY OF WYOMING  
UNIVERSITY STATION, BOX 3008  
LARAMIE, WYOMING 82071



ROAD CLASSIFICATION  
Medium-duty ——— Light-duty ———  
Unimproved dirt ———



LOGICAL SURVEY OF WYOMING  
TOPO 60 24000  
REDSTONE, COLO.  
39107-B2-TF-024

1960  
PHOTOREVISED 1987  
DMA 4562 II NW—SERIES V877



MAP ROOM  
ARTHUR LAKES LIBRARY  
COLORADO SCHOOL OF MINES

OFFICE COPY

LIBRARY USE ONLY

G 3701  
C222  
S24  
U5