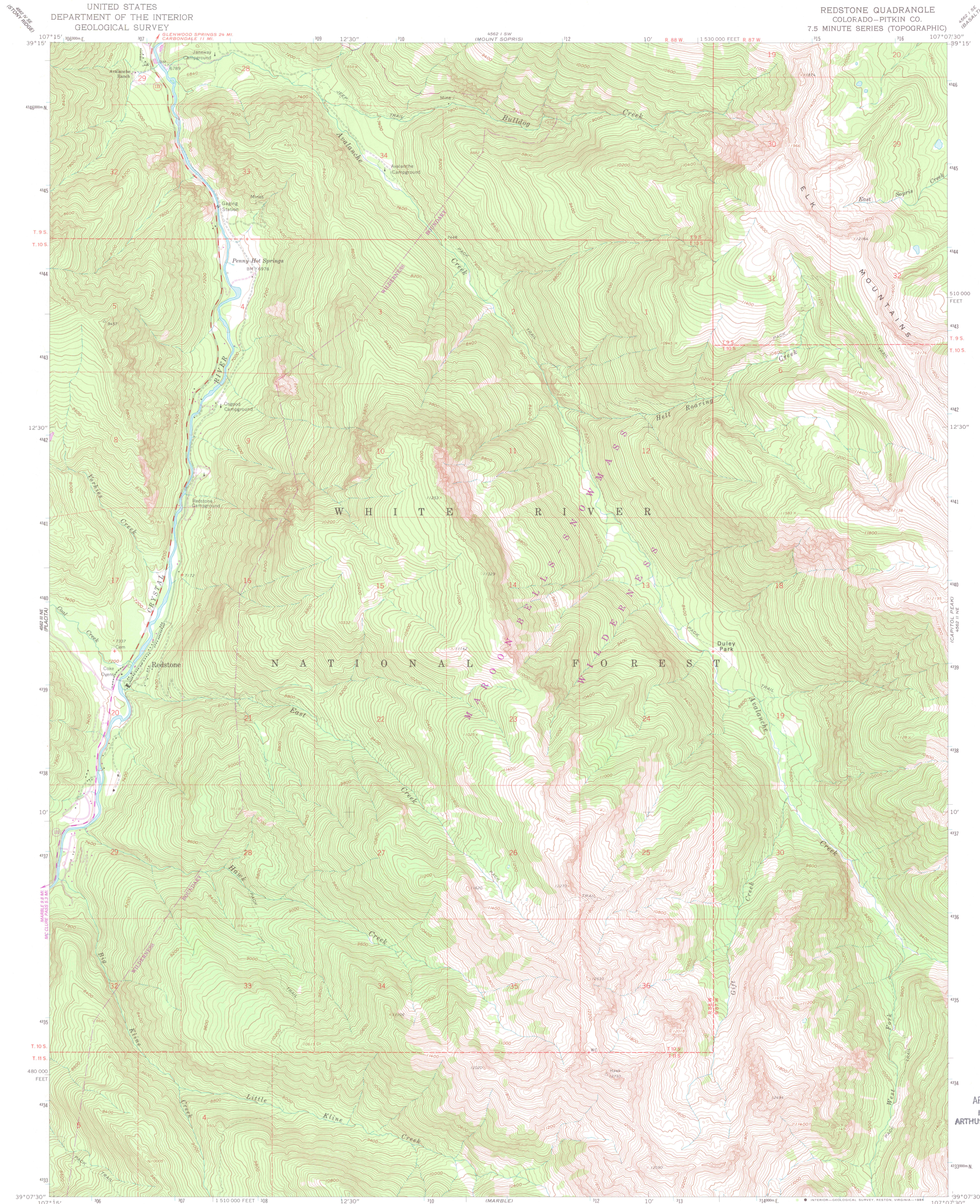


UNITED STATES
DEPARTMENT OF THE INTERIOR
GEOLOGICAL SURVEY

REDSTONE QUADRANGLE
COLORADO—PITKIN CO.
7.5 MINUTE SERIES (TOPOGRAPHIC)



Mapped, edited, and published by the Geological Survey

Control by USGS and NOS/NOAA

Topography by photogrammetric methods from aerial

photographs taken 1958. Field checked 1960

Polyconic projection, 1927 North American Datum

10,000-foot grid based on Colorado coordinate system, central zone

1000-meter Universal Transverse Mercator grid ticks,

zone 13, shown in blue

Where omitted, land lines have not been established

or have suspended

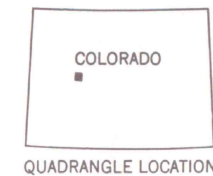
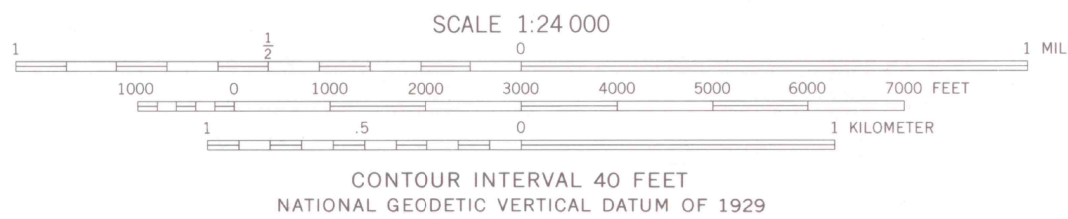
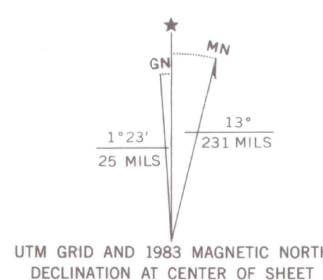
There may be private inholdings within the boundaries

of the National or State reservations shown on this map

To place on the North American Datum 1983

move the projection lines 5 meters north and

53 meters east as shown by dashed corner ticks



REDSTONE, COLO.
39107-82-TF-024

1960
PHOTOREVISED 1983
DMA 4562 II NW - SERIES V877

APR 29 1985
MAP ROOM
ARTHUR LAKES LIBRARY

LIBRARY USE ONLY