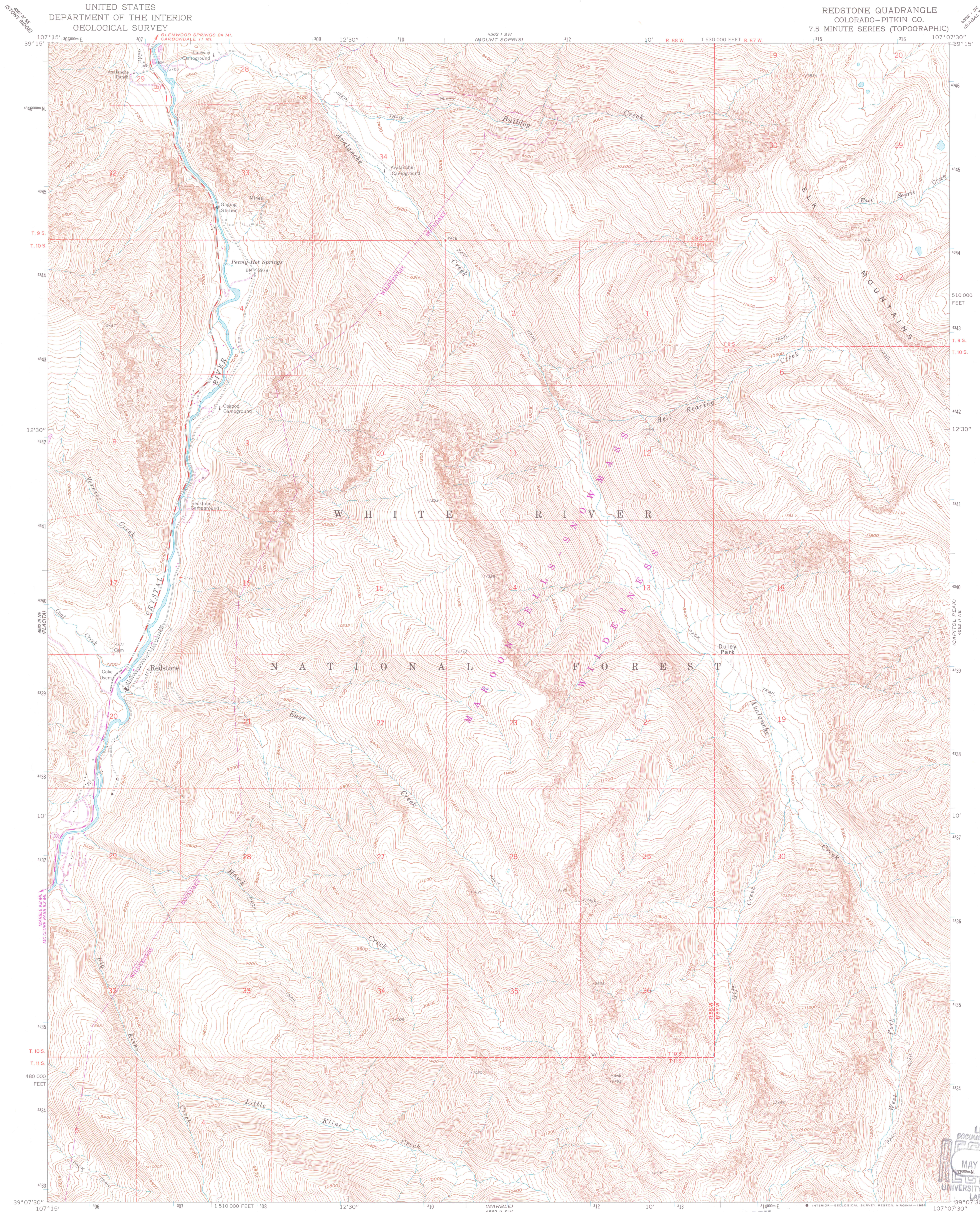


UNITED STATES
DEPARTMENT OF THE INTERIOR
GEOLOGICAL SURVEY

REDSTONE QUADRANGLE
COLORADO—PITKIN CO.
7.5 MINUTE SERIES (TOPOGRAPHIC)



Mapped, edited, and published by the Geological Survey

Control by USGS and NOS/NOAA

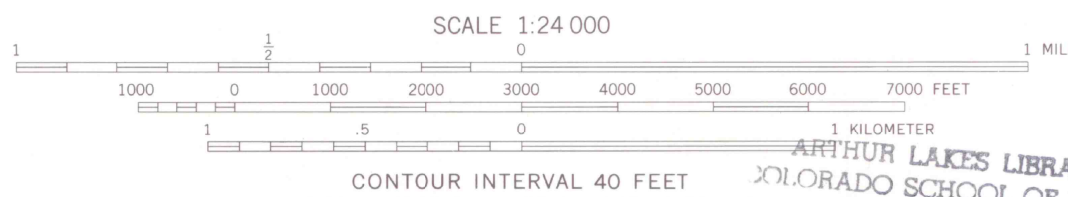
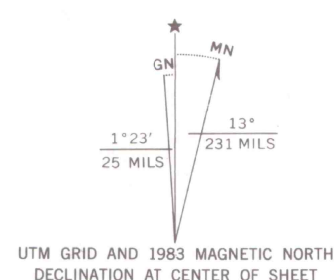
Topography by photogrammetric methods from aerial photographs taken 1958. Field checked 1960

Polyconic projection. 1927 North American Datum
10,000-foot grid based on Colorado coordinate system, central zone
1000-meter Universal Transverse Mercator grid ticks,
zone 13, shown in blue

Where omitted, land lines have not been established
or have suspended

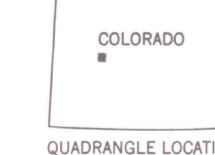
There may be private inholdings within the boundaries
of the National or State reservations shown on this map

To place on the North American Datum 1983
move the projection lines 5 meters north and
53 meters east as shown by dashed corner ticks



ARTHUR LAKES LIBRARY
COLORADO SCHOOL OF MINES
GOLDEN, COLORADO

OFFICE COPY
LIBRARY USE ONLY

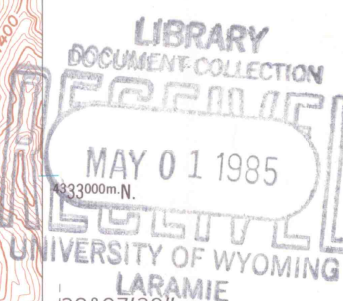


GEOLOGICAL SURVEY OF WYOMING

REDSTONE, COLO.
39107-82-TF-024

1960
PHOTOREVISED 1983
DMA 4562 II NW—SERIES V877

Revisions shown in purple compiled from aerial photographs
taken 1978 and other source data. This information not
field checked. Map edited 1983



copy