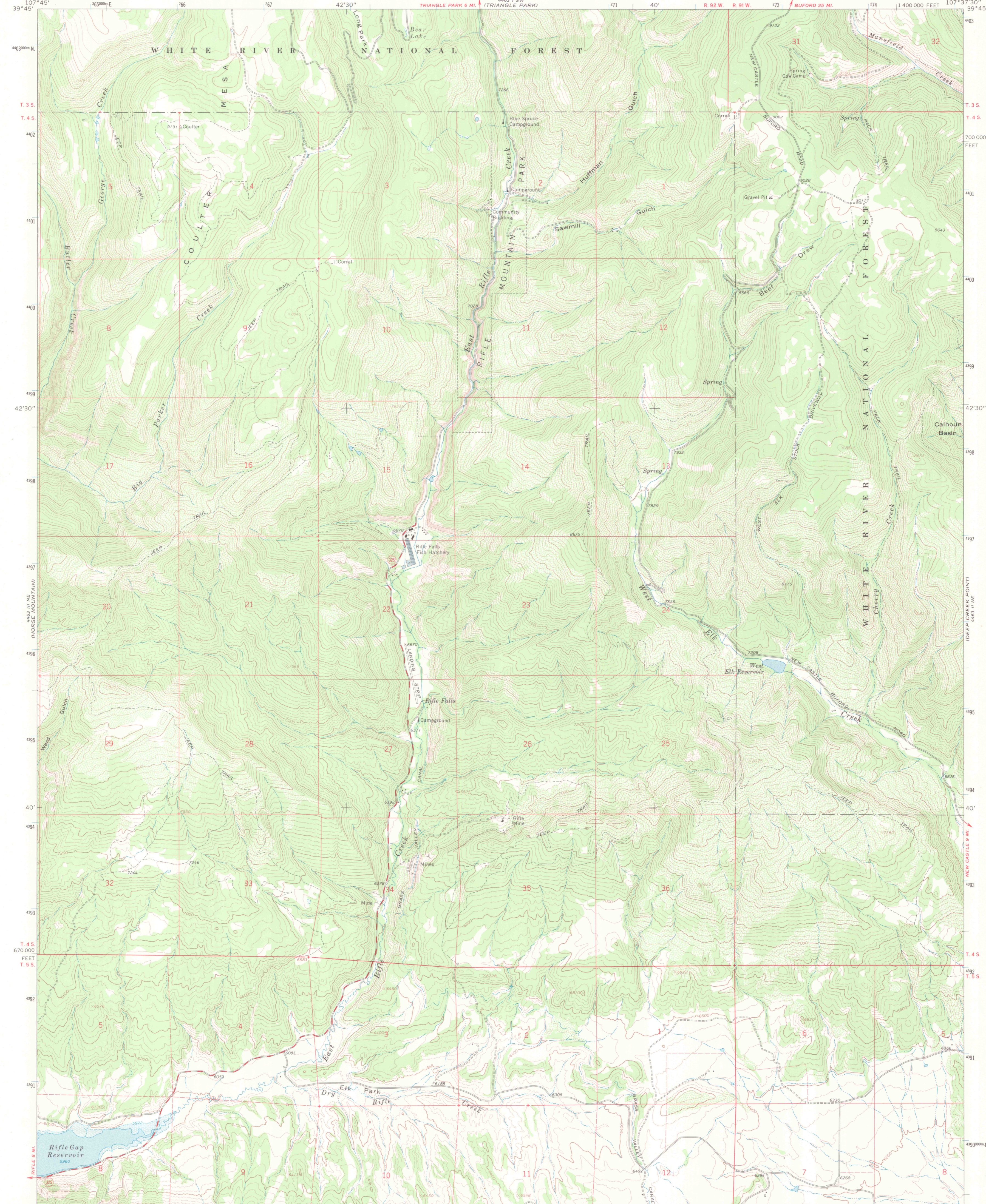
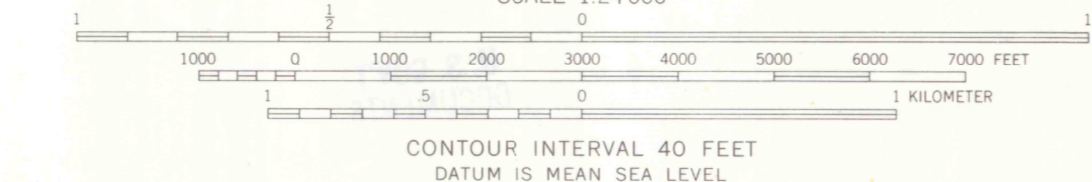
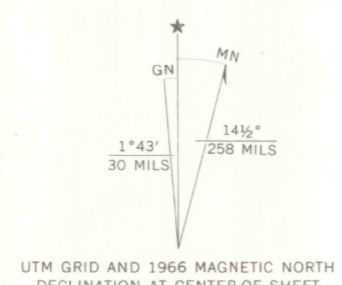


UNITED STATES
DEPARTMENT OF THE INTERIOR
GEOLOGICAL SURVEY

RIFLE FALLS QUADRANGLE
COLORADO—GARFIELD CO.
7.5 MINUTE SERIES (TOPOGRAPHIC)



Mapped, edited, and published by the Geological Survey
Control by USGS and USC&GS
Topography by photogrammetric methods from aerial
photographs taken 1964. Field checked 1966
Polyconic projection. 1927 North American datum
10,000-foot grid based on Colorado coordinate system,
central zone
1000-meter Universal Transverse Mercator grid ticks,
zone 13, shown in blue
Fine red dashed lines indicate selected fence lines
Where omitted, land lines have not been established
or are not shown because of insufficient data
Area covered by dashed light-blue pattern is subject
to controlled inundation



ROAD CLASSIFICATION
Medium-duty ——— Light-duty ———
Unimproved dirt
State Route ○

THIS MAP COMPLIES WITH NATIONAL MAP ACCURACY STANDARDS
FOR SALE BY U.S. GEOLOGICAL SURVEY, DENVER, COLORADO 80225, OR WASHINGTON, D.C. 20242
A FOLDER DESCRIBING TOPOGRAPHIC MAPS AND SYMBOLS IS AVAILABLE ON REQUEST

RIFLE FALLS, COLO.
N3937.5—W10737.5/7.5
1966
AMS 4463 II NW—SERIES V877

OFFICE COPY

G 3700
s24
s34
MAP ROOM
LIBRARY USE ONLY

OFFICE COPY
LIBRARY USE ONLY

DARK