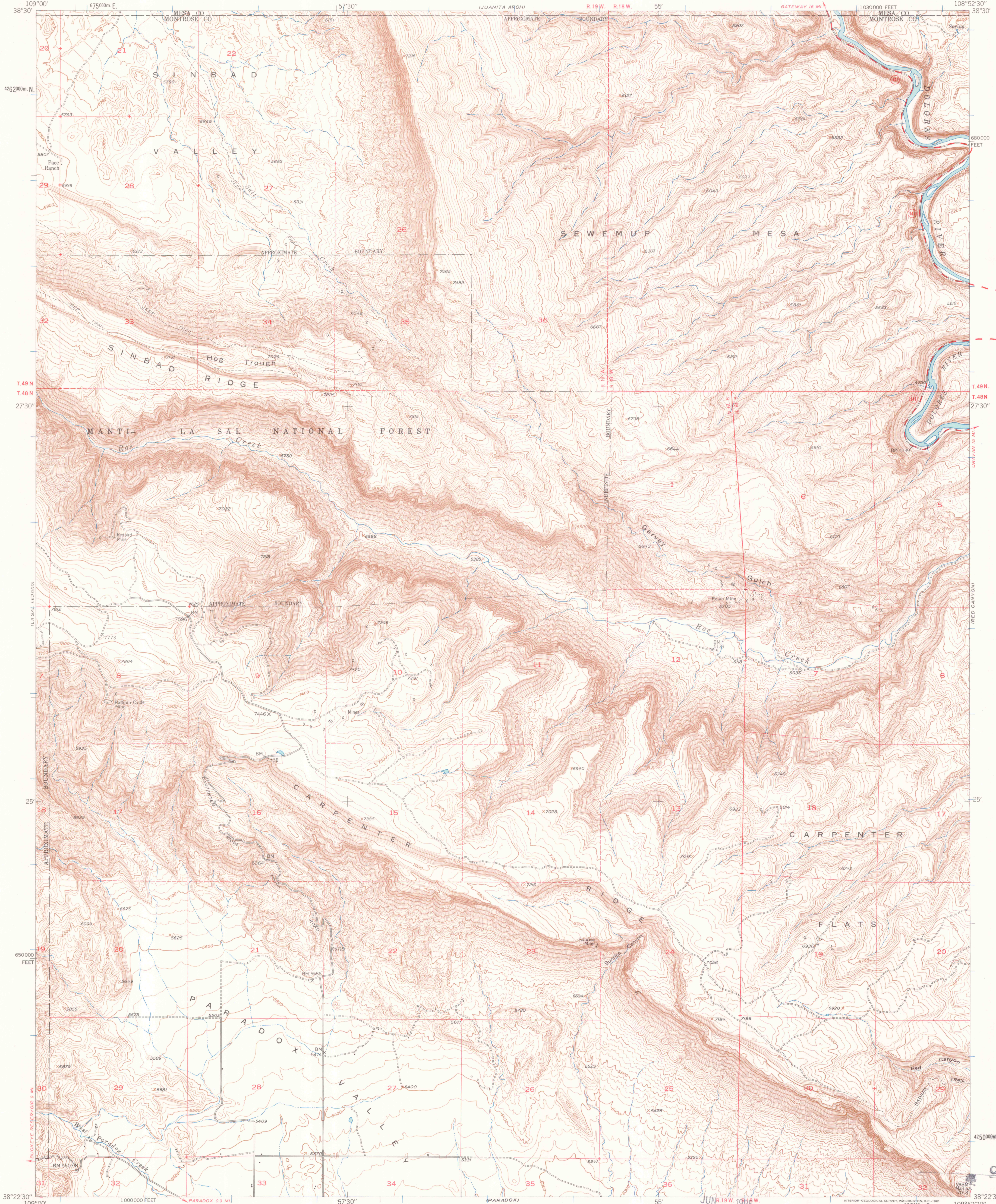
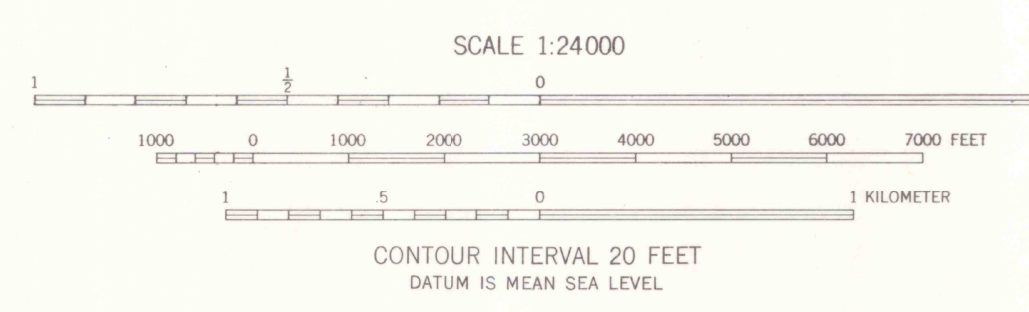


UNITED STATES  
DEPARTMENT OF THE INTERIOR  
GEOLOGICAL SURVEY

ROC CREEK QUADRANGLE  
COLORADO  
7.5 MINUTE SERIES (TOPOGRAPHIC)  
NW 1/4 PARADOX 15 QUADRANGLE



Maped, edited, and published by the Geological Survey  
Control by USGS and USC&GS  
Topography from aerial photographs by photogrammetric methods  
Aerial photographs taken 1947. Field check 1948. Revised 1960  
Polyconic projection. 1927 North American datum  
10,000-foot grid based on Colorado coordinate system,  
south zone  
Universal Transverse Mercator grid ticks,  
zone 12, shown in blue  
Dashed land lines indicate approximate locations  
Land lines omitted in parts of T. 48 N.,  
R. 19 W. and T. 49 N., Rs. 18 and 19 W.  
because of insufficient data



MAP ROOM  
ARTHUR LAKES LIBRARY  
COLORADO SCHOOL OF MINES

ROAD CLASSIFICATION  
Medium-duty  
Light-duty  
Unimproved dirt  
State Route  
JUN 1965  
ROC CREEK, COLO.  
NW 1/4 PARADOX 15 QUADRANGLE  
N3822.5-W10852.5/7.5  
1960  
MAP ROOM  
ARTHUR LAKES LIBRARY  
COLORADO SCHOOL OF MINES  
3701  
C222  
S24  
U5

THIS MAP COMPLIES WITH NATIONAL MAP ACCURACY STANDARDS  
FOR SALE BY U.S. GEOLOGICAL SURVEY, DENVER 2, COLORADO OR WASHINGTON 25, D.C.  
A FOLDER DESCRIBING TOPOGRAPHIC MAPS AND SYMBOLS IS AVAILABLE ON REQUEST