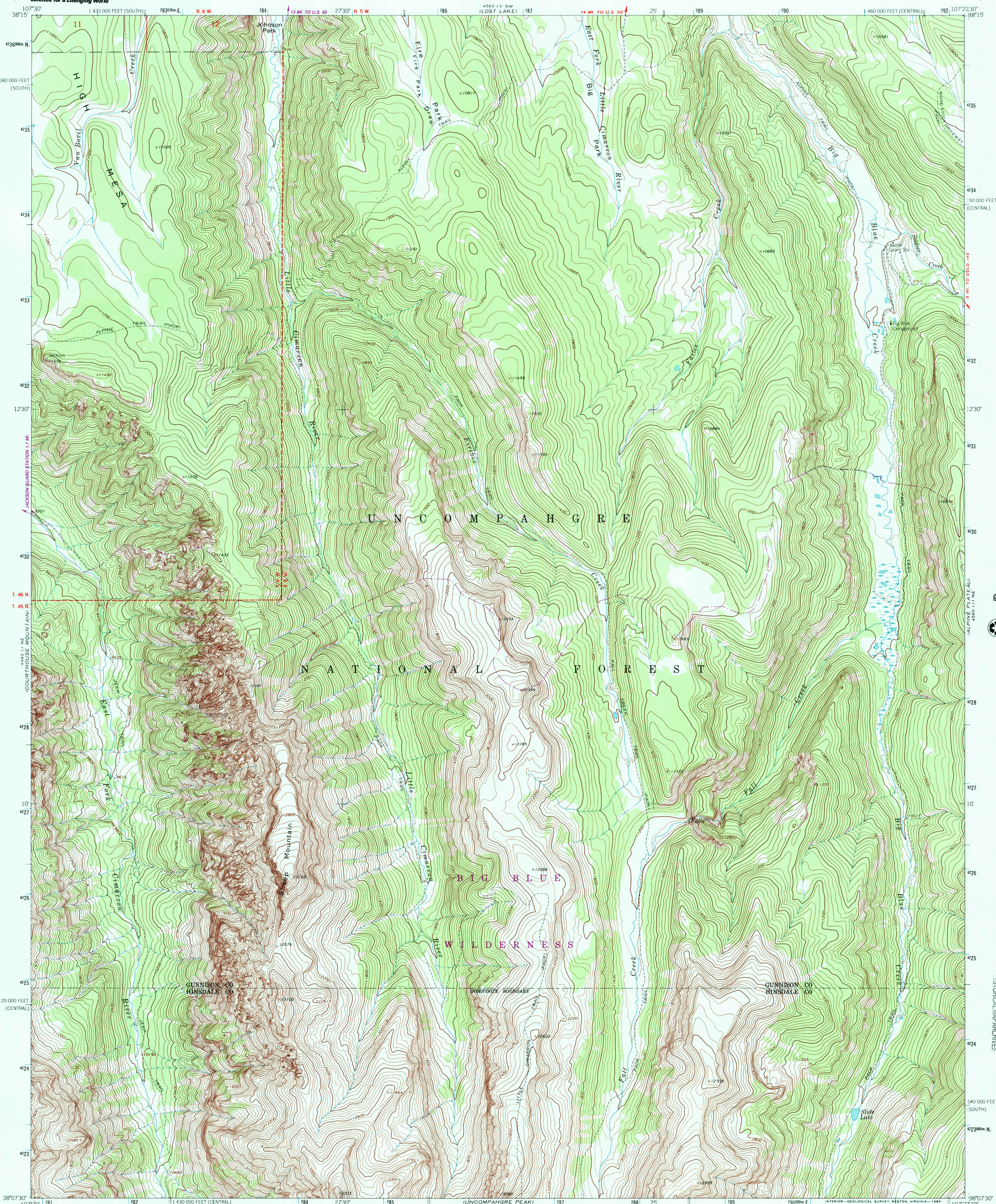




U.S. DEPARTMENT OF THE INTERIOR  
U.S. GEOLOGICAL SURVEY

SHEEP MOUNTAIN QUADRANGLE  
COLORADO  
7.5 MINUTE SERIES (TOPOGRAPHIC)



Mapped, edited, and published by the Geological Survey  
Control by USGS and NOS/NOAA

Topography by photogrammetric methods from aerial  
photographs taken 1962 Field checked 1963

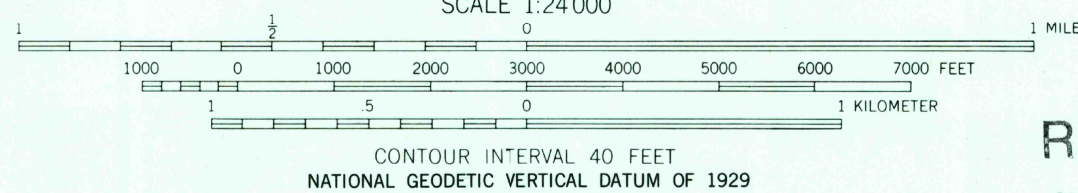
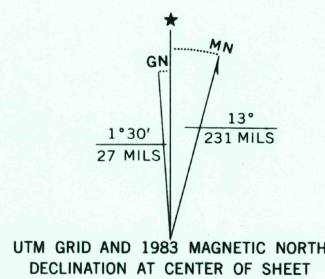
Polyconic projection 1927 North American Datum  
10,000-foot grids based on Colorado coordinate system, central  
and south zones  
1000 meter Universal Transverse Mercator grid ticks,  
zone 13, shown in blue

Where omitted, land lines have not been established or are  
not shown because of insufficient data

To place on the predicted North American Datum 1983  
move the projection lines 4 meters north and  
54 meters east as shown by dashed corner ticks

There may be private inholdings within the boundaries  
of the National or State reservations shown on this map

THIS MAP COMPLIES WITH NATIONAL MAP ACCURACY STANDARDS  
FOR SALE BY U.S. GEOLOGICAL SURVEY, P.O. BOX 25286, DENVER, COLORADO 80225  
A FOLDER DESCRIBING TOPOGRAPHIC MAPS AND SYMBOLS IS AVAILABLE ON REQUEST



RECEIVED  
MAR 31 2001



ROAD CLASSIFICATION  
Light-duty ..... Unimproved dirt .....

SHEEP MOUNTAIN, COLO.  
38107-84-TF-024

1963  
PHOTOREVISED 1983  
DMA 4560 III NW-SERIES V877

RECEIVED  
MAR 31 2001  
U.S. GEOLOGICAL SURVEY  
HISTORICAL MAP ARCHIVES

