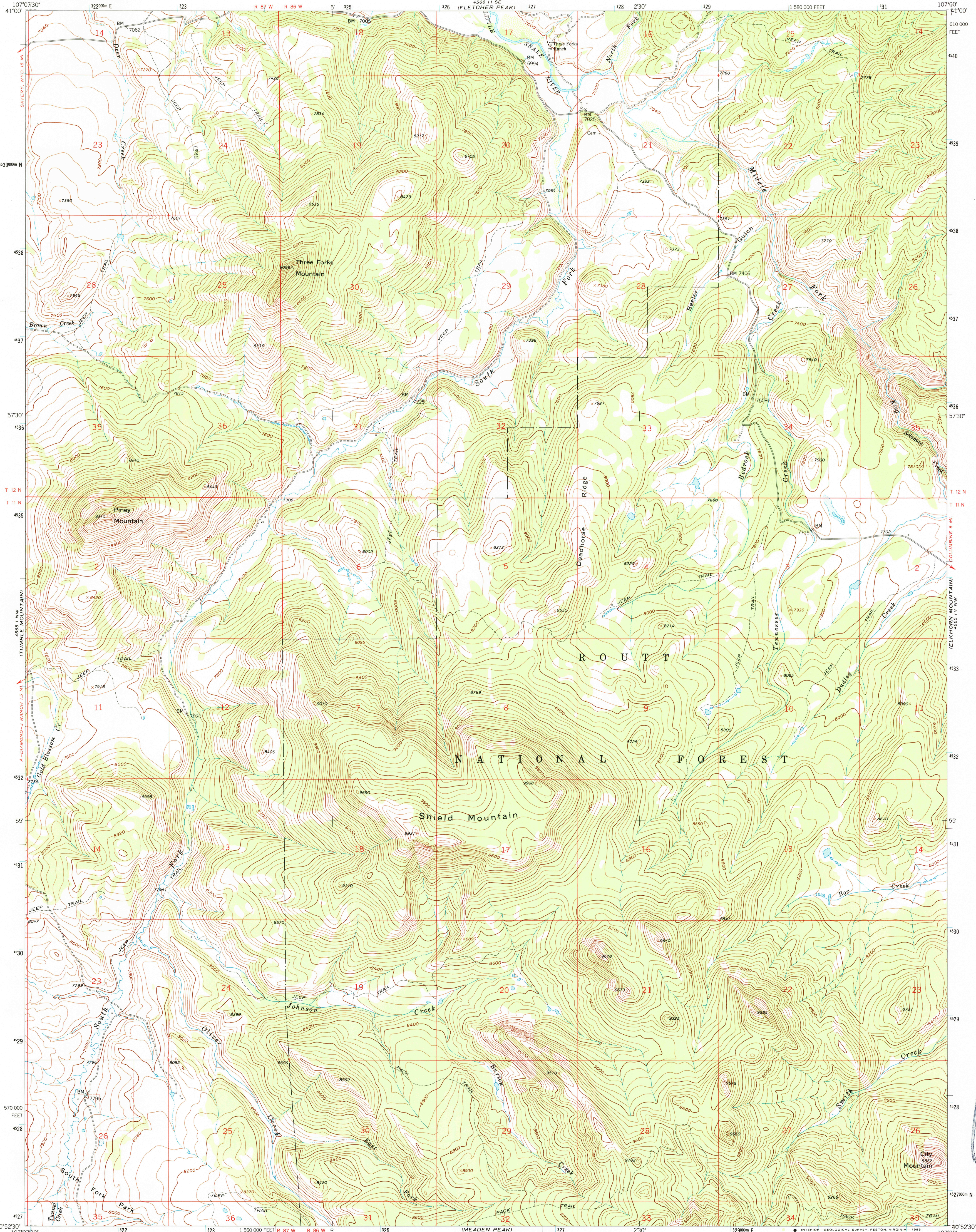


UNITED STATES
DEPARTMENT OF THE INTERIOR
GEOLOGICAL SURVEY

SHIELD MOUNTAIN QUADRANGLE
COLORADO-ROUTT CO.
7.5 MINUTE SERIES (TOPOGRAPHIC)



Maped, edited, and published by the Geological Survey
as part of the Department of the Interior program
for the development of the Missouri River Basin

Control by USGS and USC&GS

Topography by photogrammetric methods from aerial
photographs taken 1957. Field checked 1962

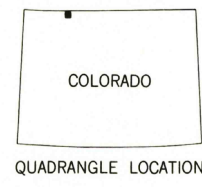
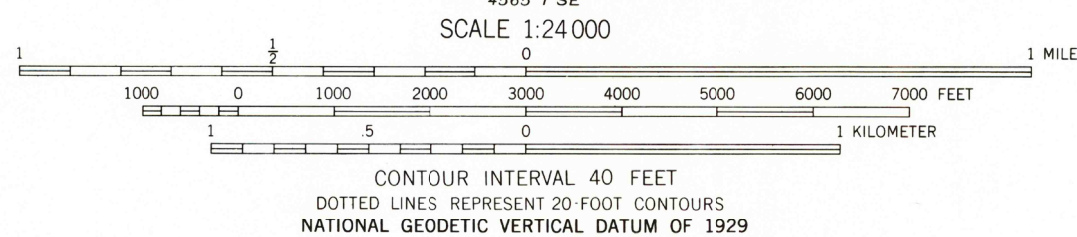
Polyconic projection. 1927 North American Datum.
10,000-foot grid based on Colorado coordinate system, north zone
1000-meter Universal Transverse Mercator grid ticks,
zone 13, shown in blue

Fine red dashed lines indicate selected fence lines

To place on the predicted North American Datum 1983
move the projection lines 7 meters north and
52 meters east as shown by dashed corner ticks

There may be private inholdings within the boundaries of
the National or State reservations shown on this map

Map photoinspected 1973
No major culture or drainage changes observed



ROAD CLASSIFICATION
Light-duty ————— Unimproved dirt - - - - -

SHIELD MOUNTAIN, COLO.
40107-H1-TF-024

1962
PHOTOINSPECTED 1973
DMA 4565 I NE-SERIES V877

