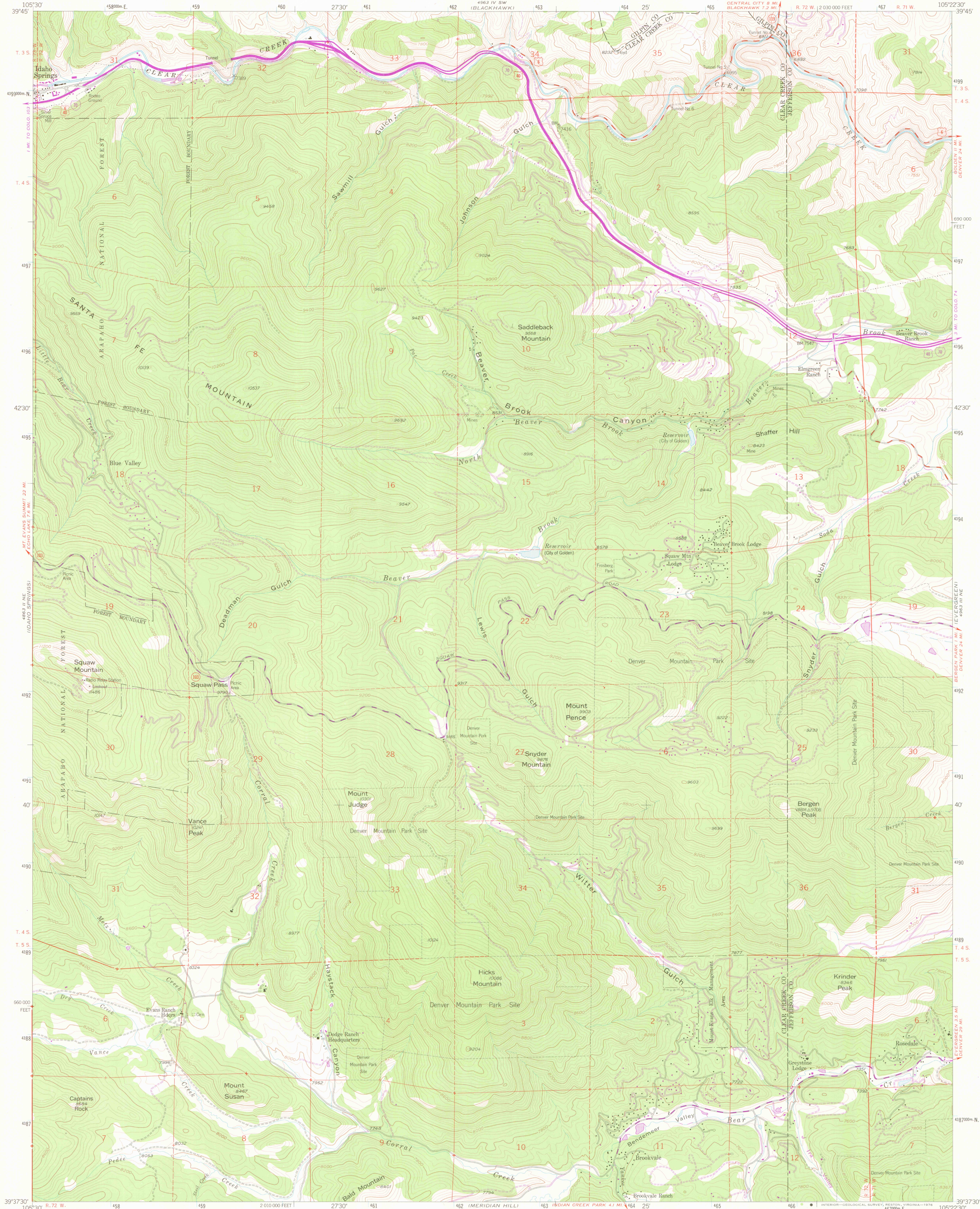
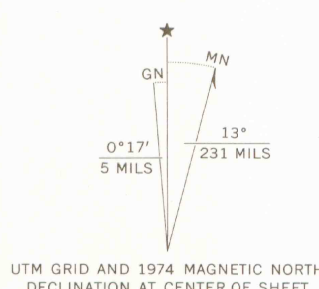


UNITED STATES  
DEPARTMENT OF THE INTERIOR  
GEOLOGICAL SURVEY

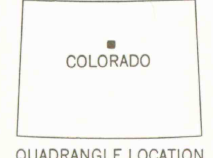
SQUAW PASS QUADRANGLE  
COLORADO  
7.5 MINUTE SERIES (TOPOGRAPHIC)



Maped, edited, and published by the Geological Survey as part of the Department of the Interior program for the development of the Missouri River Basin Control by USGS and NOS/NOAA  
Topography from aerial photographs by photogrammetric methods  
Aerial photographs taken 1953. Field check 1957  
Polyconic projection. 1927 North American datum  
10,000-foot grid based on Colorado coordinate system, central zone  
1000-metre Universal Transverse Mercator grid ticks, zone 13, shown in blue  
Dashed land lines indicate approximate locations  
Revisions shown in purple compiled from aerial photographs taken 1974. This information not field checked



SCALE 1:24,000  
CONTOUR INTERVAL 40 FEET  
NATIONAL GEODETIC VERTICAL DATUM OF 1929



ROAD CLASSIFICATION  
Primary highway, hard surface  
Secondary highway, hard surface  
Unimproved road  
Interstate Route  
U. S. Route  
State Route



JAN 2 9 2006

OFFICE COPY  
LIBRARY USE ONLY

MAP ROOM  
ARTHUR LAKES LIBRARY  
COLORADO SCHOOL OF MINES

SQUAW PASS, COLO.  
N3937.5-W10522.5/7.5

1957  
PHOTOREVISED 1974  
AMS 4963 III NW-SERIES V877

G 3700  
s24  
.G4  
MAP ROOM