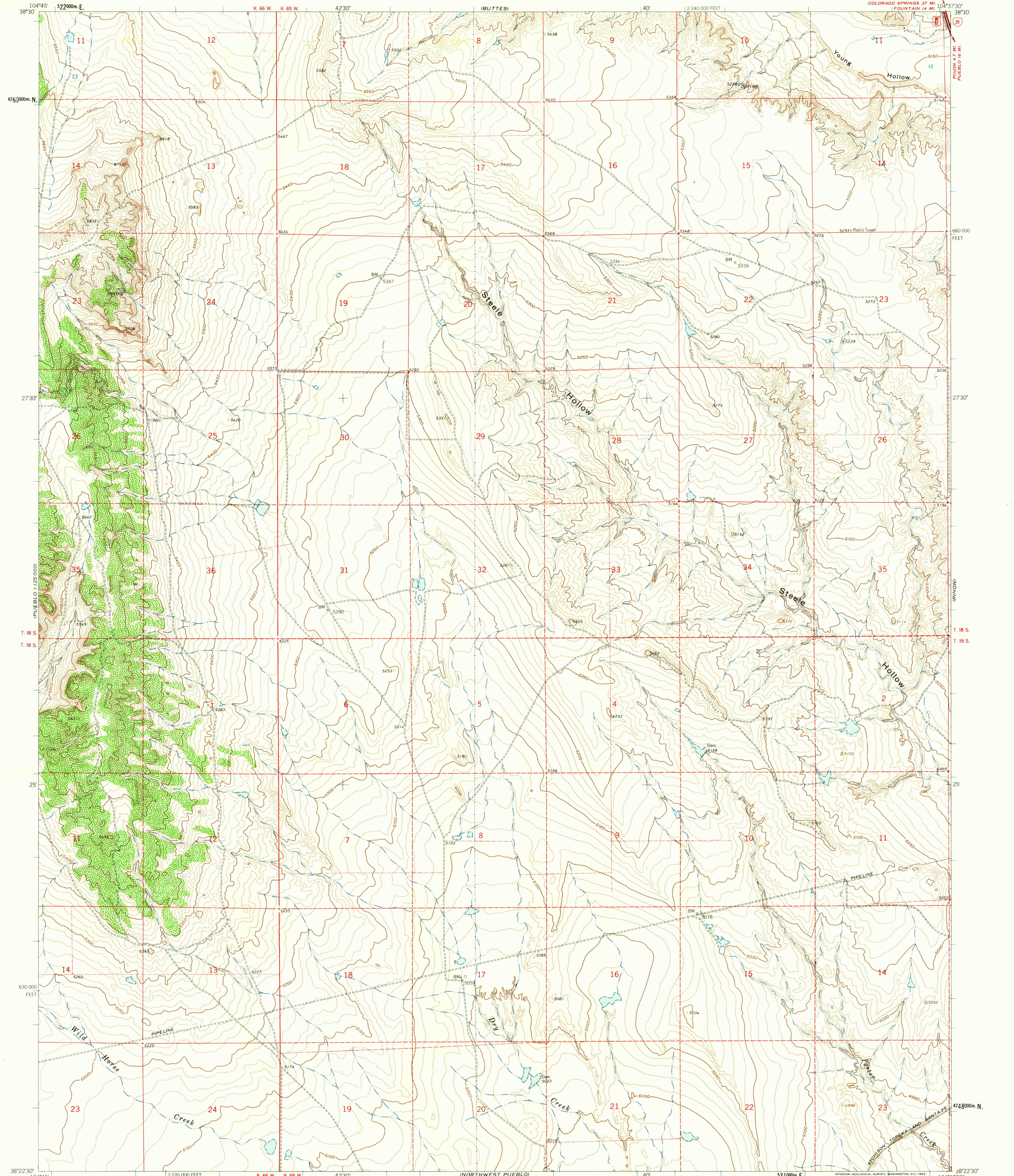


UNITED STATES
DEPARTMENT OF THE INTERIOR
GEOLOGICAL SURVEY

STEELE HOLLOW QUADRANGLE
COLORADO-PUEBLO CO.
7.5 MINUTE SERIES (TOPOGRAPHIC)



Mapped, edited, and published by the Geological Survey

Control by USGS and USC&GS

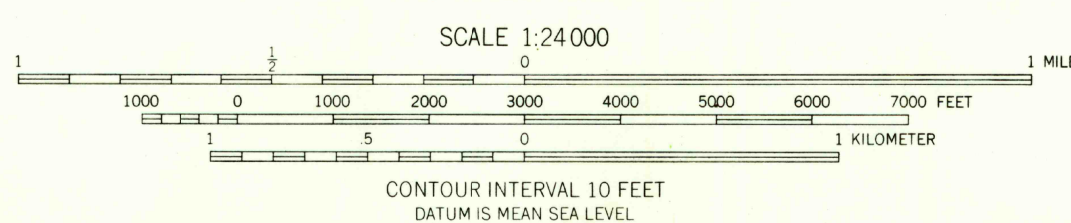
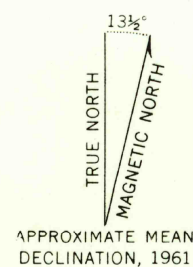
Topography by photogrammetric methods from aerial photographs taken 1954 and 1957. Field checked 1961

Polyconic projection. 1927 North American datum

10,000-foot grid based on Colorado coordinate system, south zone

1000-meter Universal Transverse Mercator grid ticks, zone 13, shown in blue

Fine red dashed lines indicate selected fence and field lines where generally visible on aerial photographs. This information is unchecked



USGS
Historical File
Topographic Division



ROAD CLASSIFICATION
Heavy-duty ——— Light-duty ———
Unimproved dirt ———
Interstate Route ——— U.S. Route ———

STEELE HOLLOW, COLO.
N3822 5-W10437 5/7 5

1961

NOV 26 1962