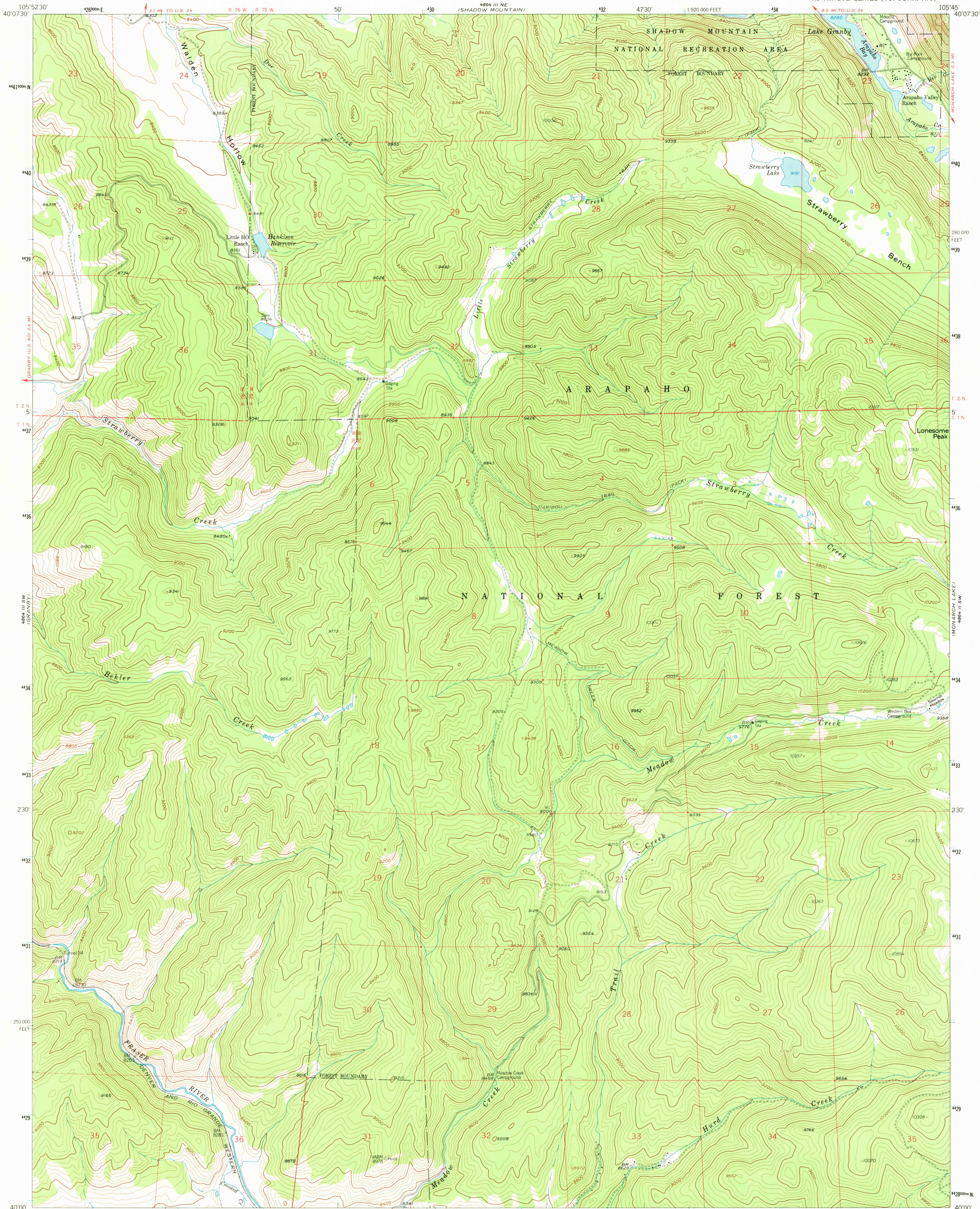
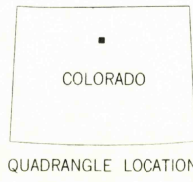
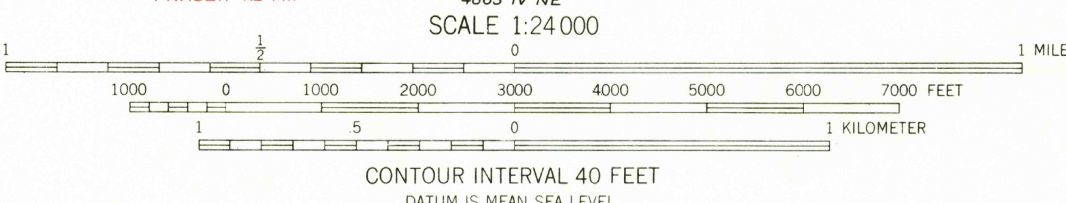
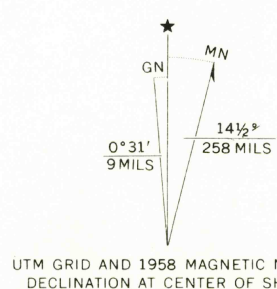


UNITED STATES  
DEPARTMENT OF THE INTERIOR  
GEOLOGICAL SURVEY

STRAWBERRY LAKE QUADRANGLE  
COLORADO-GRAND CO.  
7.5 MINUTE SERIES (TOPOGRAPHIC)



Maped, edited, and published by the Geological Survey  
Control by USGS and USC&GS  
Topography from aerial photographs by photogrammetric methods  
Aerial photographs taken 1953. Field check 1958  
Polyconic projection. 1927 North American datum  
10,000-foot grid based on Colorado coordinate system,  
north zone  
1000-meter Universal Transverse Mercator grid ticks,  
zone 13, shown in blue  
Dashed land lines indicate approximate locations  
Certain land lines omitted in T. 1 N.-R. 76 W.  
because of insufficient data  
Unchecked elevations are shown in brown



ROAD CLASSIFICATION  
Light-duty ————— Unimproved dirt - - - - -

THIS MAP COMPLIES WITH NATIONAL MAP ACCURACY STANDARDS  
FOR SALE BY U.S. GEOLOGICAL SURVEY, DENVER, COLORADO 80225, OR WASHINGTON, D. C. 20242  
A FOLDER DESCRIBING TOPOGRAPHIC MAPS AND SYMBOLS IS AVAILABLE ON REQUEST

STRAWBERRY LAKE, COLO.  
N4000-W10545/7.5

1958 JUN 15 1973

AMS 4864 III SE-SERIES V877

6485