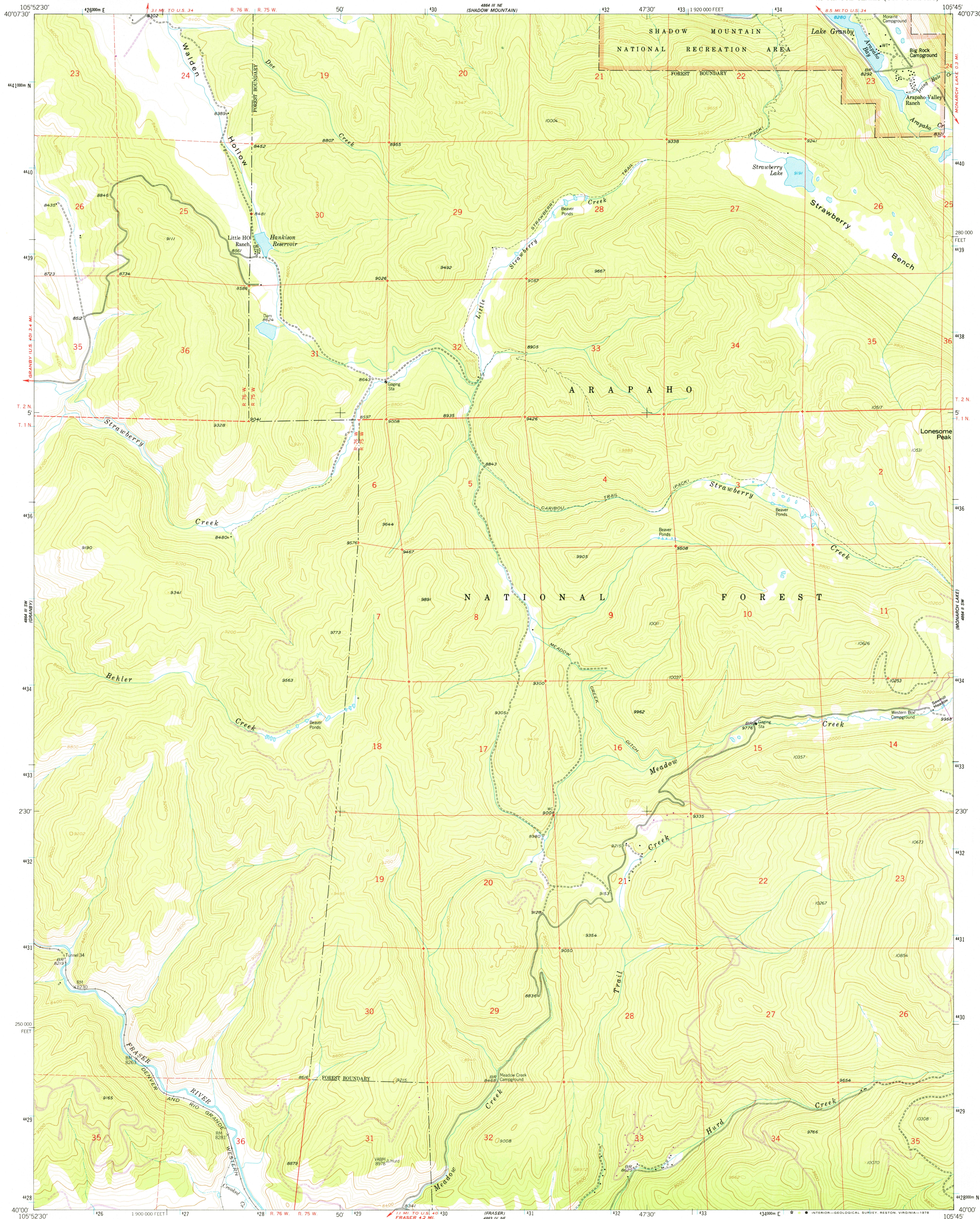
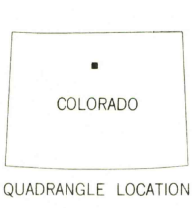
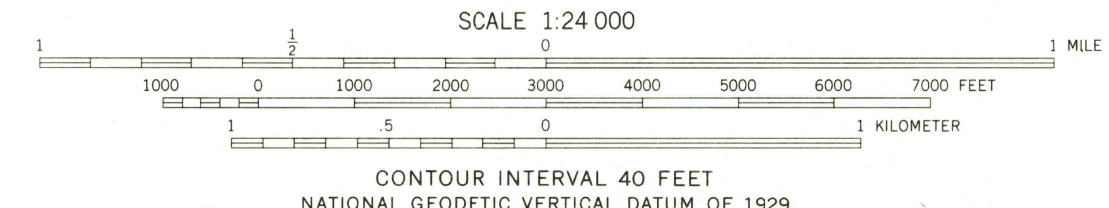
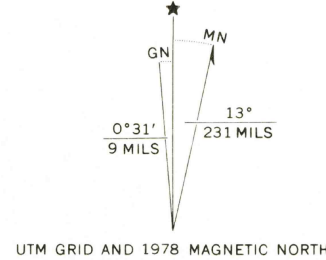


UNITED STATES
DEPARTMENT OF THE INTERIOR
GEOLOGICAL SURVEY

STRAWBERRY LAKE QUADRANGLE
COLORADO-GRAND CO.
7.5 MINUTE SERIES (TOPOGRAPHIC)



Mapped, edited, and published by the Geological Survey
Control by USGS and NOS/NOAA
Topography from aerial photographs by photogrammetric methods
Aerial photographs taken 1953. Field check 1958
Polyconic projection. 1927 North American datum
10,000-foot grid based on Colorado coordinate system,
north zone
1000-meter Universal Transverse Mercator grid ticks,
zone 13, shown in blue
Dashed land lines indicate approximate locations
Certain land lines omitted in T. 1 N.-R. 76 W.
because of insufficient data
Unchecked elevations are shown in brown
Revisions shown in purple compiled from aerial photographs taken
1976. Map edited 1978. This information not field checked



ROAD CLASSIFICATION
Light-duty Unimproved dirt

THIS MAP COMPLIES WITH NATIONAL MAP ACCURACY STANDARDS
FOR SALE BY U. S. GEOLOGICAL SURVEY, DENVER, COLORADO 80225, OR RESTON, VIRGINIA 22092
A FOLDER DESCRIBING TOPOGRAPHIC MAPS AND SYMBOLS IS AVAILABLE ON REQUEST

USGS
Historical File
Topographic Division

STRAWBERRY LAKE, COLO.
N4000-W10545/7.5
1958
PHOTOREVISED 1978
AMS 4864 III SE-SERIES V877

MAR 16 1979

6800