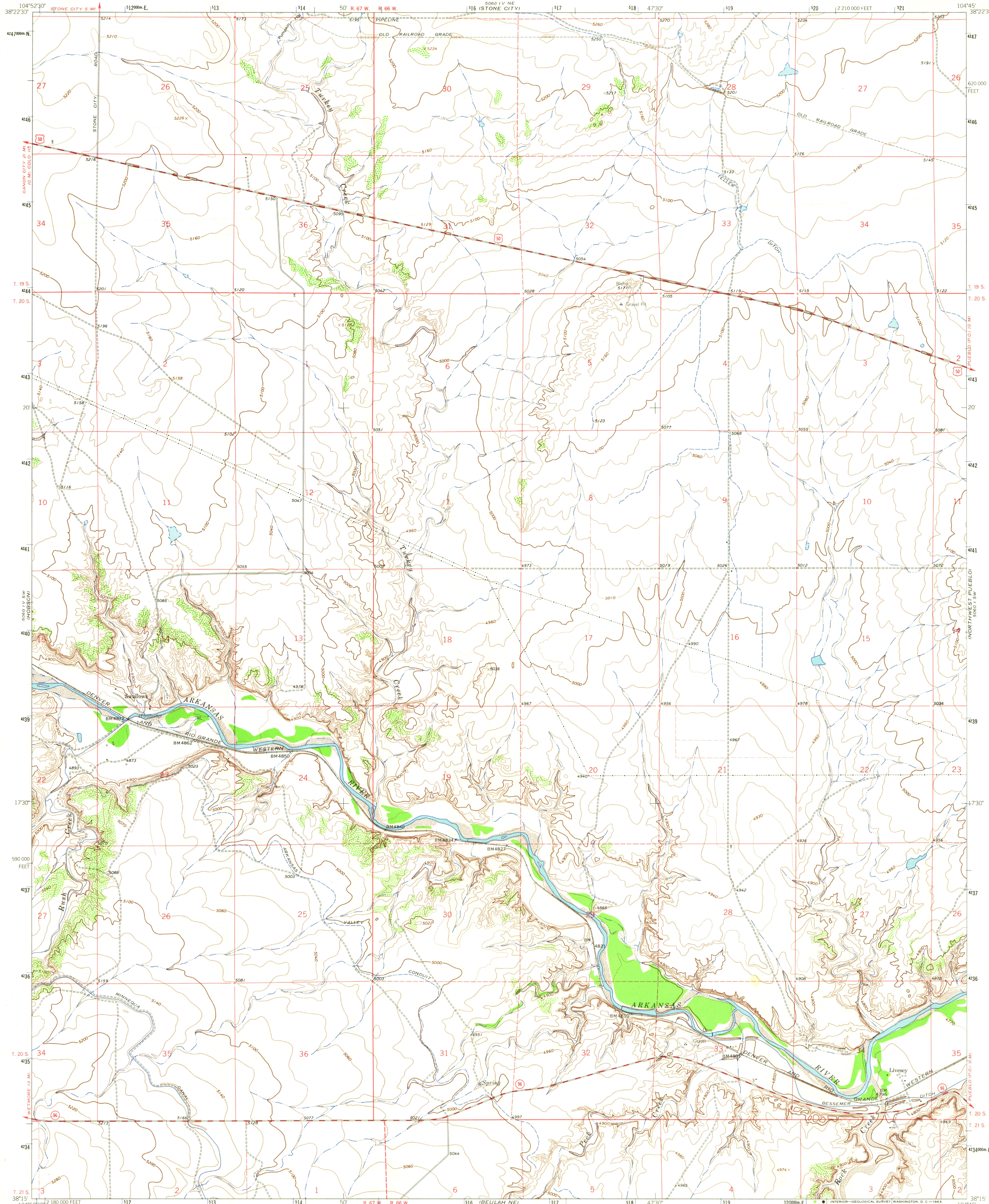


UNITED STATES
DEPARTMENT OF THE INTERIOR
GEOLOGICAL SURVEY

SWALLOWS QUADRANGLE
COLORADO-PUEBLO CO.
7.5 MINUTE SERIES (TOPOGRAPHIC)



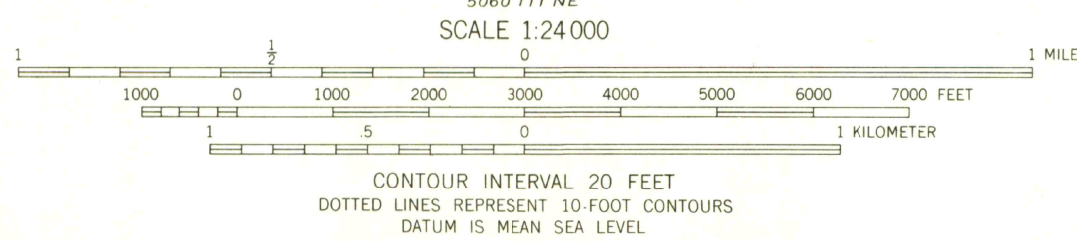
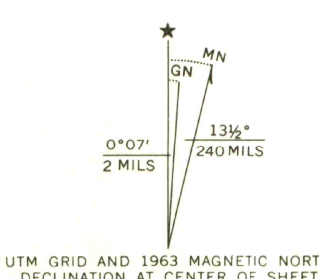
Mapped, edited, and published by the Geological Survey

Control by USGS and USC&GS

Topography by photogrammetric methods from aerial
photographs taken 1956. Field checked 1963

Polycyclic projection. 1927 North American datum
10,000-foot grid based on Colorado coordinate system, south zone
1000-meter Universal Transverse Mercator grid ticks,
zone 13, shown in blue

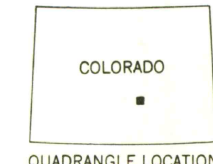
Fine red dashed lines indicate selected fence lines



THIS MAP COMPLIES WITH NATIONAL MAP ACCURACY STANDARDS
FOR SALE BY U.S. GEOLOGICAL SURVEY, DENVER 25, COLORADO OR WASHINGTON 25, D.C.
A FOLDER DESCRIBING TOPOGRAPHIC MAPS AND SYMBOLS IS AVAILABLE ON REQUEST

LIBRARY USE ONLY

ROAD CLASSIFICATION
Medium-duty ——— Light-duty ———
Unimproved dirt ———



U. S. GOV'T
DOCUMENTS

XX
ARTHUR LAKES LIBRARY
COLORADO SCHOOL OF MINES
GOLDEN

SWALLOWS, COLO.
N3815-W10445/7.5
1963

AMS 5060 IV SE-SERIES V877

~~SUPERSEDED~~
COLORADO SCHOOL
OF MINES
LIBRARY

OFFICE COPY