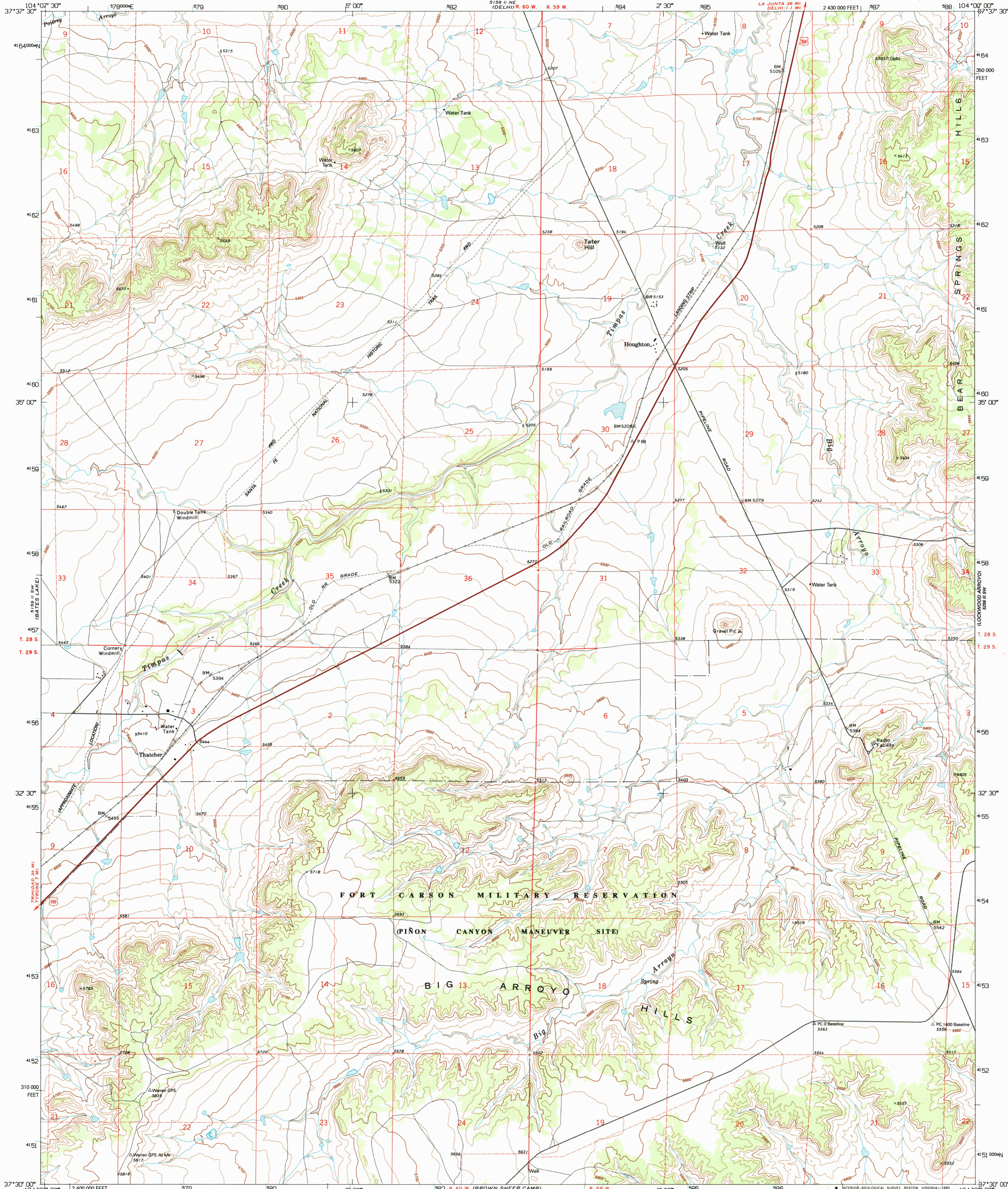
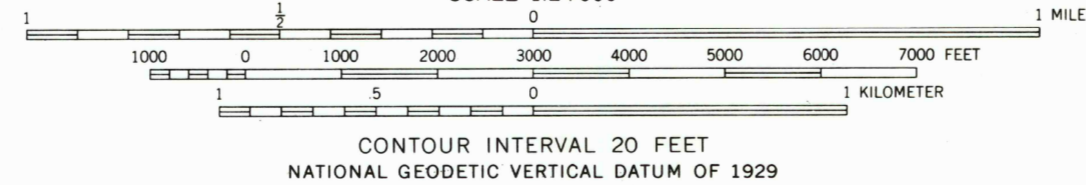
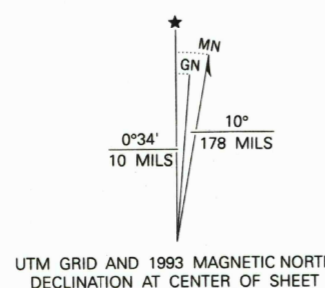


UNITED STATES
DEPARTMENT OF THE INTERIOR
GEOLOGICAL SURVEY

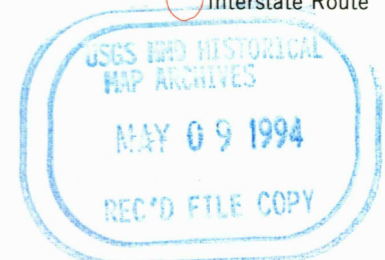
THATCHER QUADRANGLE
COLORADO-LAS ANIMAS CO.
7.5 MINUTE SERIES (TOPOGRAPHIC)



Produced by the United States Geological Survey
Control by USGS and NOS/NOAA
Compiled from aerial photographs taken 1969. Revised from aerial
photographs taken 1988 and other sources. Field checked 1991
Map edited 1993
1927 North American Datum (NAD 27). Projection and
Blue 1000-meter Universal Transverse Mercator ticks, zone 13
10 000-foot ticks. Colorado Coordinate System, south zone
North American Datum of 1983 (NAD 83) is shown by dashed
corner ticks. The values of the shift between NAD 27 and NAD 83
for 7.5-minute intersections are given in USGS Bulletin 1875
There may be private inholdings within the boundaries of the
National or State reservations shown on this map
Fine red dashed lines indicate selected fence and field lines where
generally visible on aerial photographs



ROAD CLASSIFICATION
Primary highway, hard surface
Secondary highway, hard surface
Interstate Route
U. S. Route
State Route
Light duty road, hard or improved surface
Unimproved road



THATCHER, COLO.
37104-E1-TF-024
1993
DMA 5159 II SE-SERIES V877

THIS MAP COMPLIES WITH NATIONAL MAP ACCURACY STANDARDS
FOR SALE BY U. S. GEOLOGICAL SURVEY, DENVER, COLORADO 80225, OR RESTON, VIRGINIA 22092
A FOLDER DESCRIBING TOPOGRAPHIC MAPS AND SYMBOLS IS AVAILABLE ON REQUEST