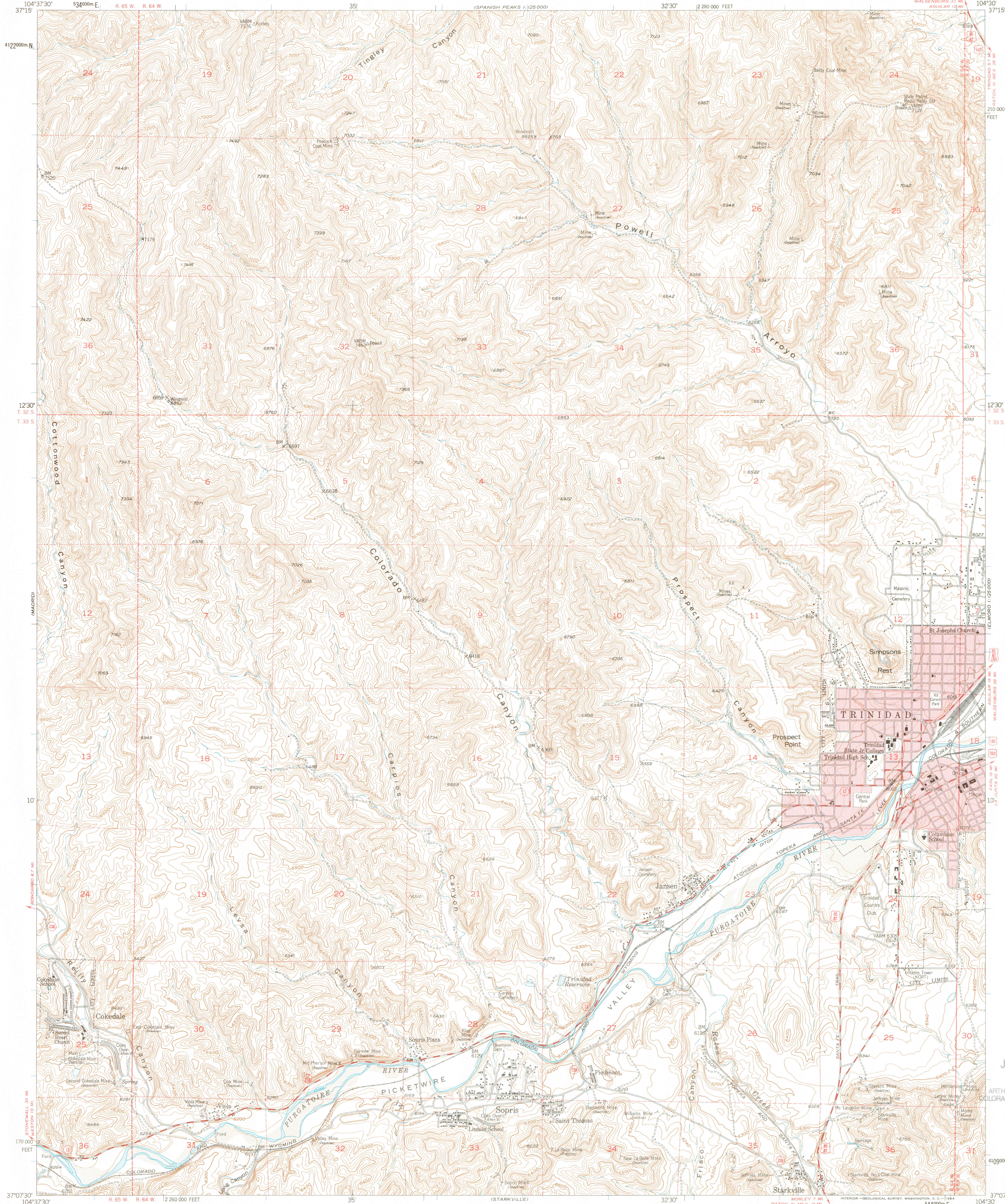


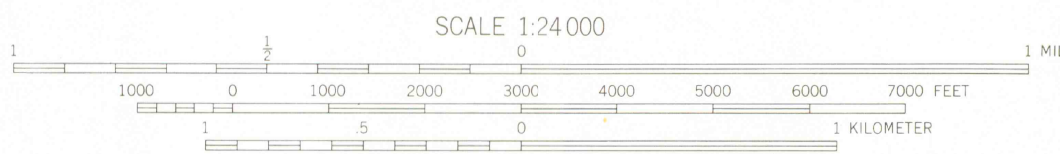
UNITED STATES  
DEPARTMENT OF THE INTERIOR  
GEOLOGICAL SURVEY

TRINIDAD QUADRANGLE  
COLORADO-LAS ANIMAS CO.  
7.5 MINUTE SERIES (TOPOGRAPHIC)



Mapped, edited, and published by the Geological Survey  
Control by USGS and USC&GS  
Topography from aerial photographs by multiplex methods 1951  
Aerial photographs taken 1947. Field check 1951  
Polyconic projection. 1927 North American datum  
10,000-foot grid based on Colorado coordinate system,  
south zone  
Red tint indicates area in which only  
landmark buildings are shown  
Dashed land lines indicate approximate locations  
Unchecked elevations are shown in brown  
1000-meter Universal Transverse Mercator grid ticks,  
zone 13, shown in blue

APPROXIMATE MEAN  
DECLINATION, 1951



CONTOUR INTERVAL 20 FEET  
DATUM IS MEAN SEA LEVEL

THIS MAP COMPLIES WITH NATIONAL MAP ACCURACY STANDARDS  
FOR SALE BY U. S. GEOLOGICAL SURVEY, DENVER 25, COLORADO OR WASHINGTON 25, D. C.  
A FOLDER DESCRIBING TOPOGRAPHIC MAPS AND SYMBOLS IS AVAILABLE ON REQUEST



ROAD CLASSIFICATION  
Medium-duty ——— Light-duty ———  
Unimproved dirt ———  
U. S. Route ——— State Route ———

TRINIDAD, COLO.  
N3707.5—W10430.7/5  
1951



JUL 14 1999

MAP NO. 3702  
ARTHUR LAKES LIBRARY  
COLORADO SCHOOL OF MINES

702  
G 3700  
US 524  
G4  
w/ BAP ROOM  
e.)