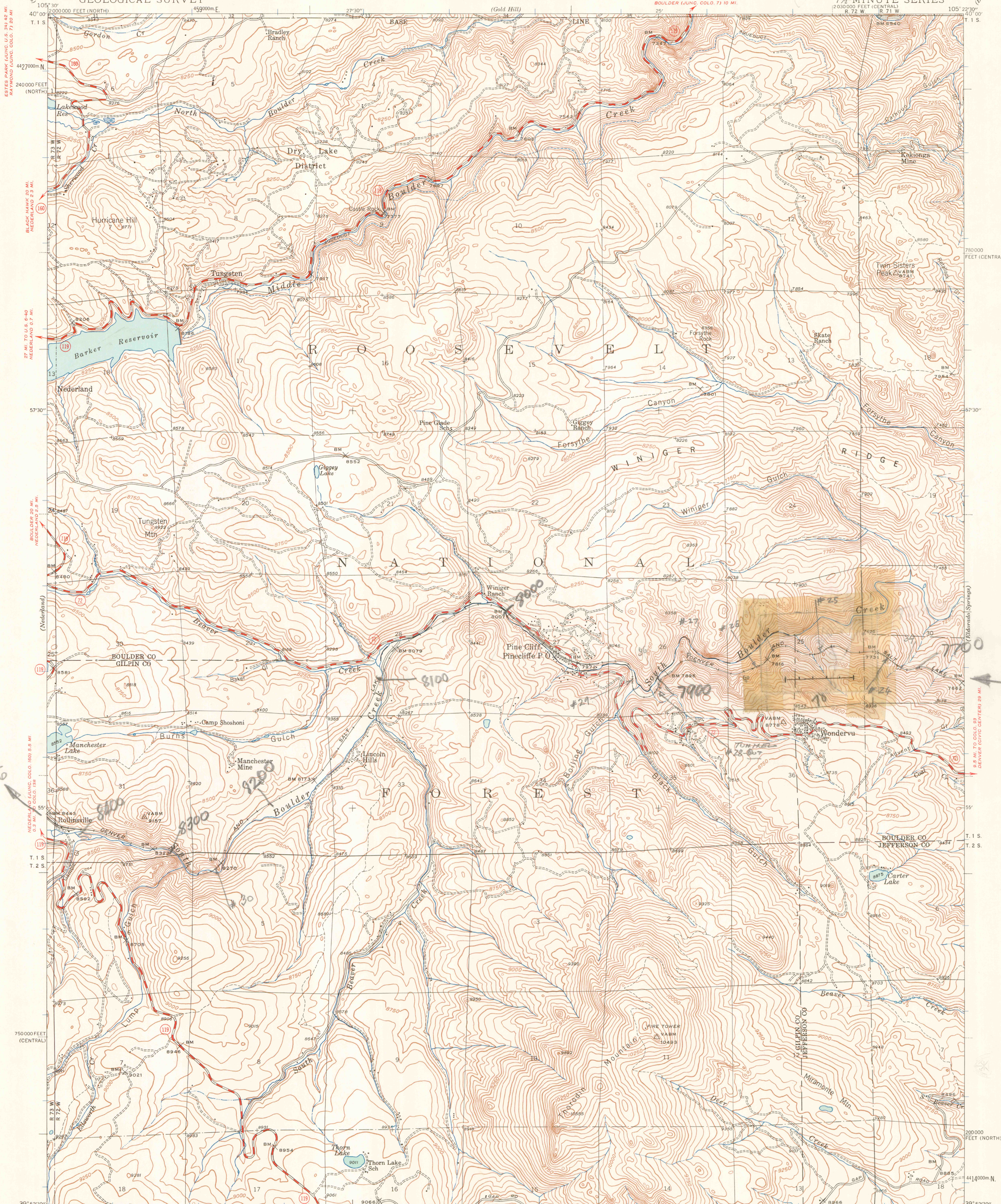


UNITED STATES
DEPARTMENT OF THE INTERIOR
GEOLOGICAL SURVEY

STATE OF COLORADO
STATE HIGHWAY DEPARTMENT CITY AND COUNTY OF DENVER
DENVER BOARD OF WATER COMMISSIONERS

COLORADO
TUNGSTEN QUADRANGLE
7½-MINUTE SERIES



Topography by Harry Parker
Surveyed in 1942
Work Projects Administration Nos. 4803 and 5012
Colorado State Highway Department,
City and County of Denver,
Denver Board of Water Commissioners, Sponsors
Max J. Gleissner, Geological Survey, Supervisor

TRUE NORTH
MAGNETIC NORTH
APPROXIMATE MEAN
DECLINATION, 1942

SCALE 1:24,000
CONTOUR INTERVAL 50 FEET
DATUM IS MEAN SEA LEVEL

ROAD CLASSIFICATION
Medium-duty ——— Light-duty ———
Unimproved dirt ———
State Route

TUNGSTEN, COLO.
N3952.5—W10522.5/7.5
1942

FOR SALE BY U. S. GEOLOGICAL SURVEY, DENVER 25, COLORADO OR WASHINGTON 25, D. C.
A FOLDER DESCRIBING TOPOGRAPHIC MAPS SYMBOLS IS AVAILABLE ON REQUEST

Polyconic projection. 1927 North American datum
10,000 foot grid based on Colorado (North) and
Colorado (Central) rectangular coordinate system
1000-meter Universal Transverse Mercator grid ticks,
zone 13, shown in blue

SEP 20 2003

U.S. GEOLOGICAL SURVEY
COLORADO SCHOOL OF MINES

45