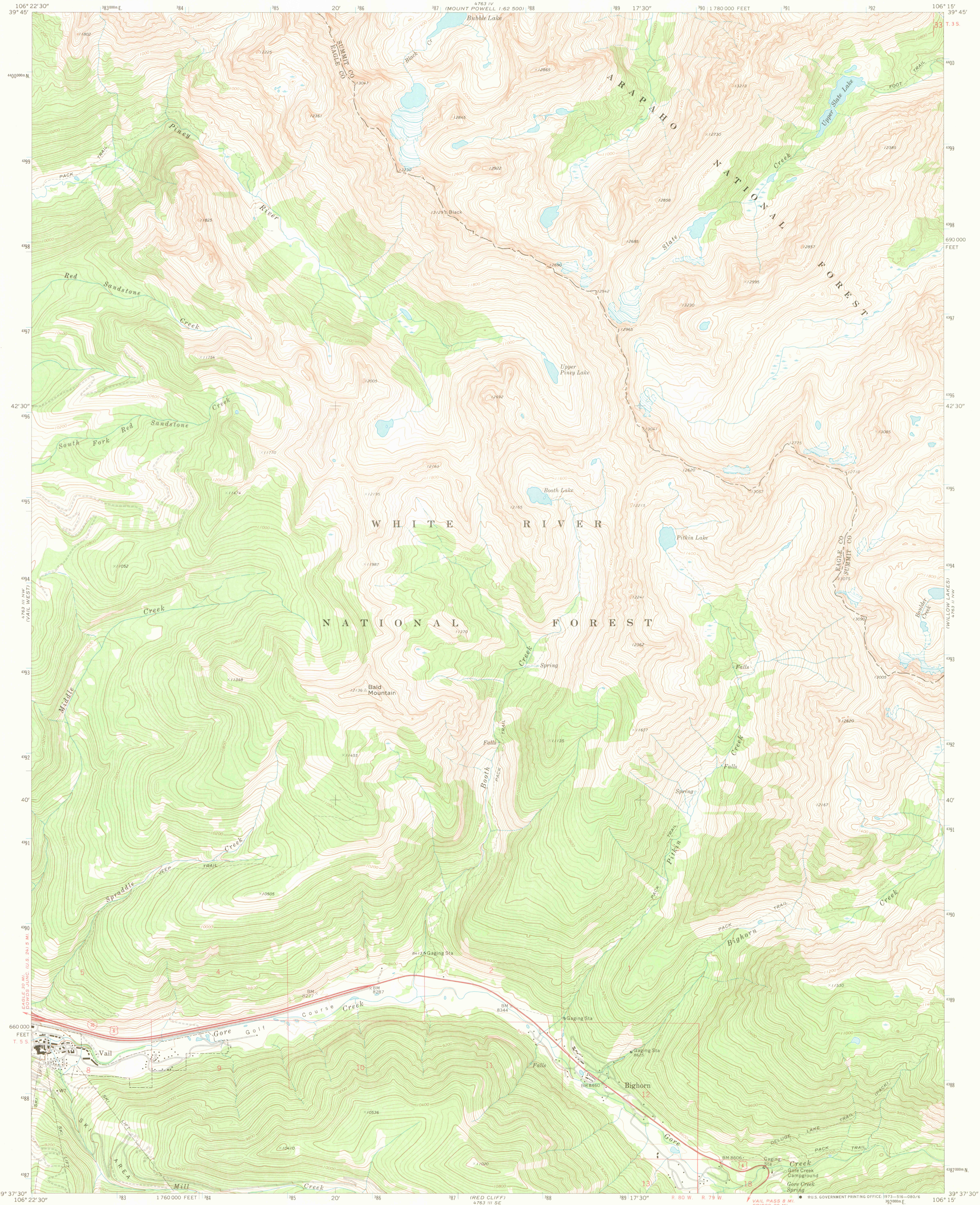


UNITED STATES  
DEPARTMENT OF THE INTERIOR  
GEOLOGICAL SURVEY

VAIL EAST QUADRANGLE  
COLORADO  
7.5 MINUTE SERIES (TOPOGRAPHIC)

NE 1/4 MINUTURN 15' QUADRANGLE

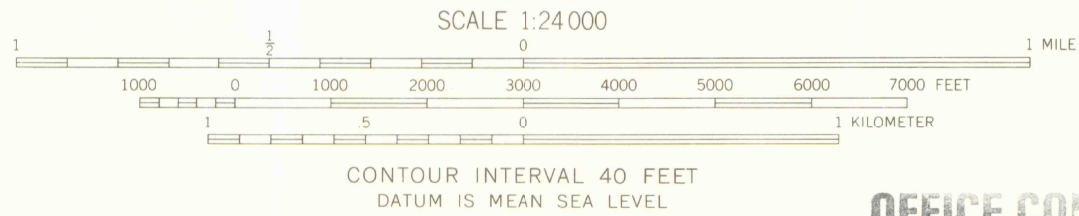
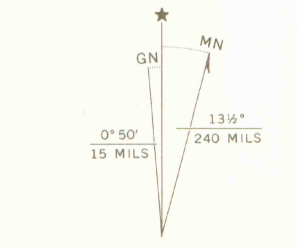


Mapped, edited, and published by the Geological Survey

Control by USGS and USC&GS

Topography by photogrammetric methods from aerial  
photographs taken 1969. Field checked 1970.

Polyconic projection. 1927 North American datum.  
10,000-foot grid based on Colorado coordinate system,  
central zone  
1000-meter Universal Transverse Mercator grid ticks,  
zone 13, shown in blue  
Where omitted, land lines have not been established



OFFICE COPY  
LIBRARY USE ONLY



ROAD CLASSIFICATION	
Primary highway, hard surface	Light-duty road, hard or improved surface
Secondary highway, hard surface	Unimproved road
Interstate Route	U.S. Route
	State Route



JAN 23 2006

MAP ROOM  
ARTHUR LAKES LIBRARY  
COLORADO SCHOOL MINES

VAIL EAST, COLO.  
NE 1/4 MINUTURN 15' QUADRANGLE  
N3937.5-W10615.75

1970

AMS 4763 III NE-SERIES V877

THIS MAP COMPLIES WITH NATIONAL MAP ACCURACY STANDARDS  
FOR SALE BY U. S. GEOLOGICAL SURVEY, DENVER, COLORADO 80225, OR WASHINGTON, D. C. 20242  
A FOLDER DESCRIBING TOPOGRAPHIC MAPS AND SYMBOLS IS AVAILABLE ON REQUEST