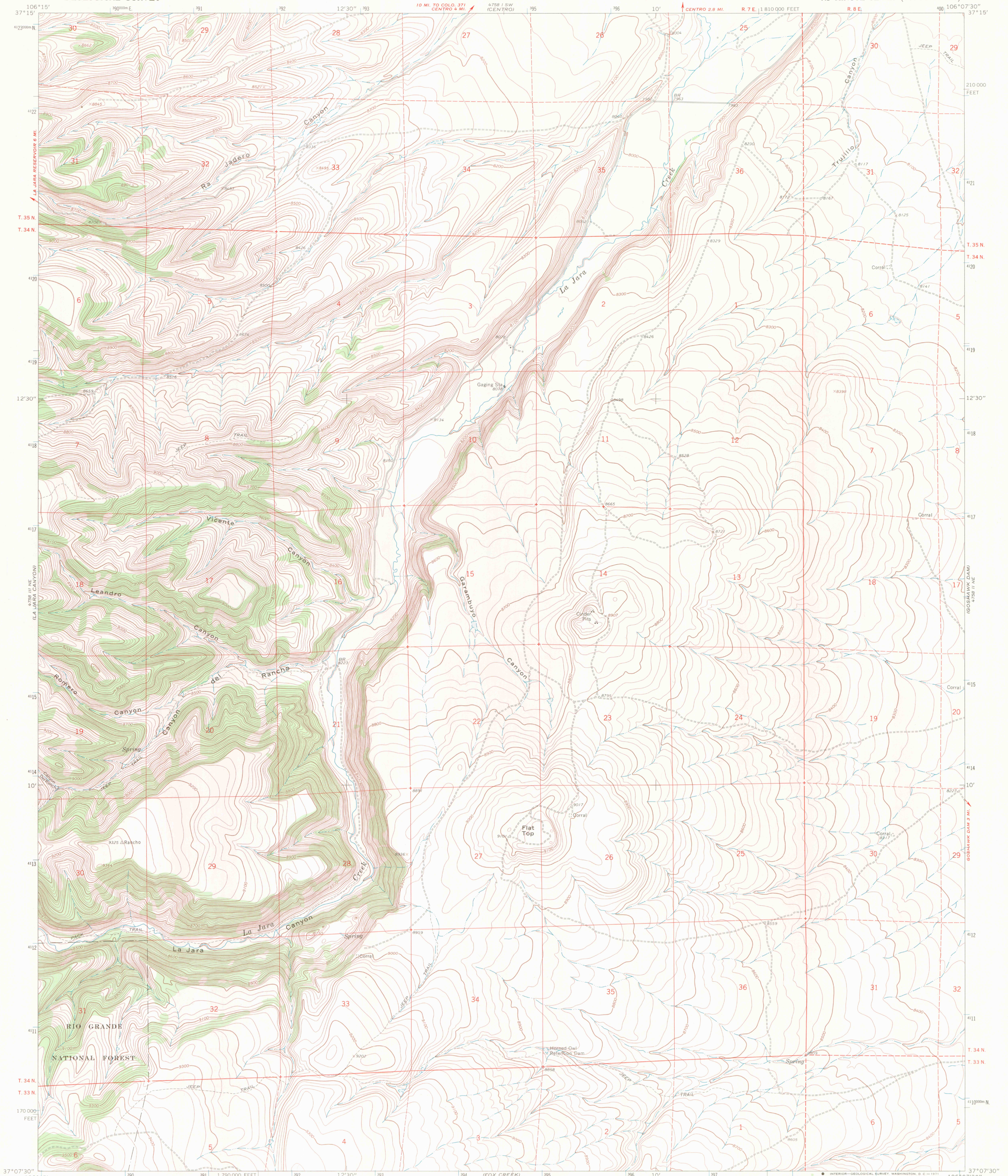
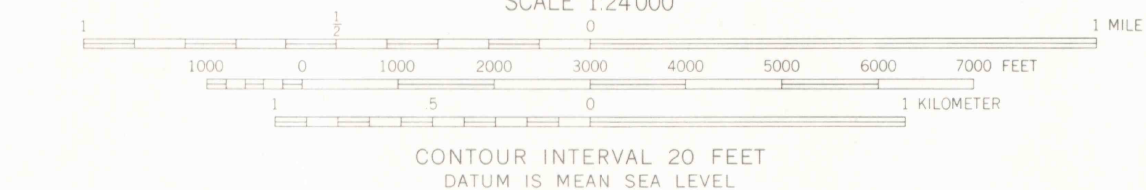
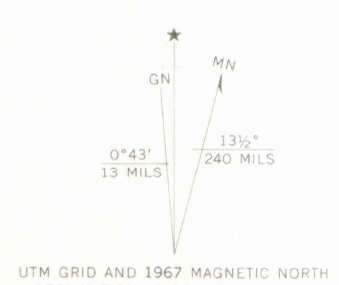


UNITED STATES  
DEPARTMENT OF THE INTERIOR  
GEOLOGICAL SURVEY

VICENTE CANYON QUADRANGLE  
COLORADO—CONEJOS CO.  
7.5 MINUTE SERIES (TOPOGRAPHIC)



Mapped, edited, and published by the Geological Survey  
Control by USGS and USCGS  
Topography by photogrammetric methods from aerial  
photographs taken 1965. Field checked 1967  
Polyconic projection. 1927 North American datum  
10,000-foot grid based on Colorado coordinate system,  
south zone  
1000-meter Universal Transverse Mercator grid ticks,  
zone 13, shown in blue  
Fine red dashed lines indicate selected fence lines



ROAD CLASSIFICATION  
Light-duty —————  
Unimproved dirt - - - - -

OFFICE COPY

VICENTE CANYON, COLO. LIBRARY USE ONLY  
N3707.5—W10607.5/7.5

1967

AMS 4758 II NW—SERIES V877