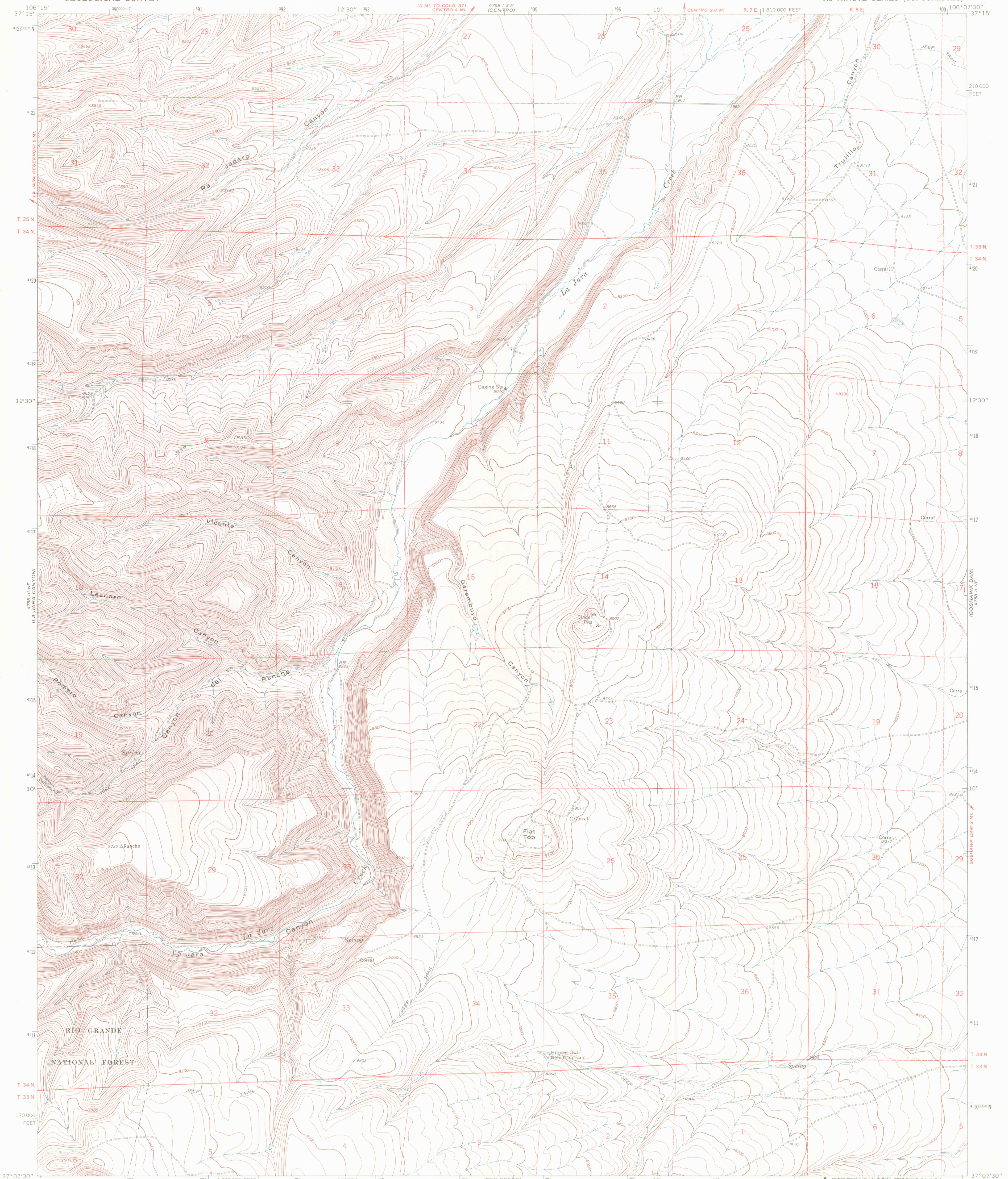
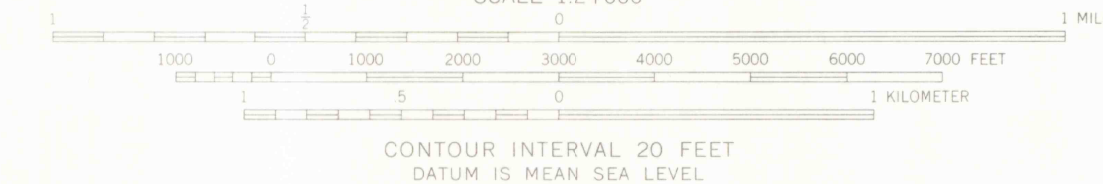
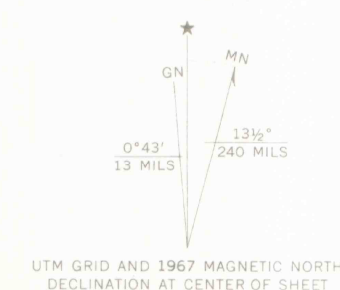


UNITED STATES
DEPARTMENT OF THE INTERIOR
GEOLOGICAL SURVEY

VICENTE CANYON QUADRANGLE
COLORADO—CONEJOS CO.
7.5 MINUTE SERIES (TOPOGRAPHIC)



Mapped, edited, and published by the Geological Survey
Control by USGS and USCGS
Topography by photogrammetric methods from aerial
photographs taken 1965. Field checked 1967
Polyconic projection. 1927 North American datum
10,000-foot grid based on Colorado coordinate system,
south zone
1000-meter Universal Transverse Mercator grid ticks,
zone 13, shown in blue
Fine red dashed lines indicate selected fence lines



ROAD CLASSIFICATION
Light-duty ——— Unimproved dirt - - - - -

LIBRARY
COLORADO SCHOOL OF MINES
GOLDEN, COLORADO

VICENTE CANYON, COLO.
N3707.5—W10607.5/7.5
1967
AMS 4758 II NW—SERIES V877

