

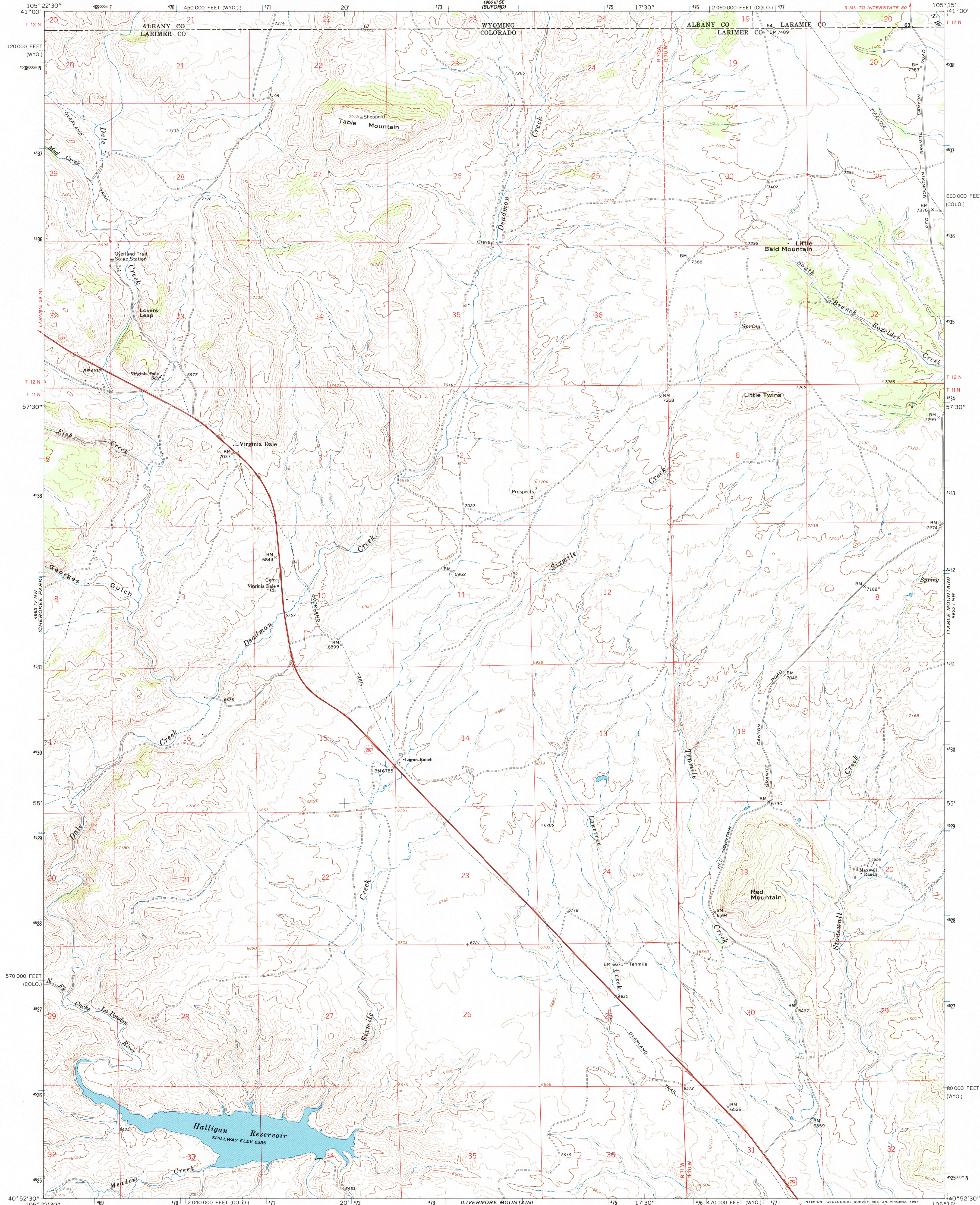
DALE CREEK



U.S. DEPARTMENT OF THE INTERIOR
U.S. GEOLOGICAL SURVEY

VIRGINIA DALE QUADRANGLE
COLORADO-WYOMING
7.5 MINUTE SERIES (TOPOGRAPHIC)

DALE CREEK



RECEIVED

SEP 3 0 2002

HISTORICAL MAP ARCHIVES

DALE CREEK

Mapped, edited, and published by the Geological Survey

Control by USGS and NOS/NOAA

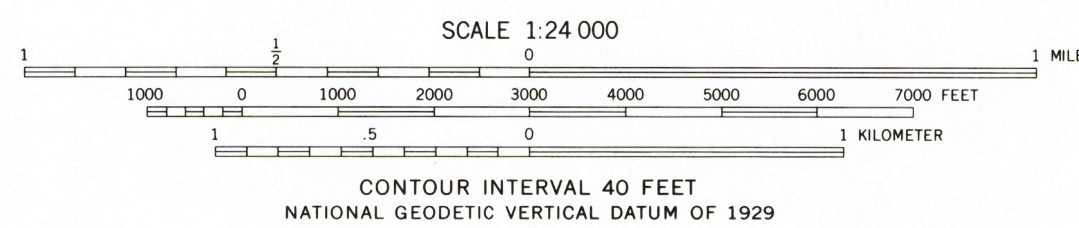
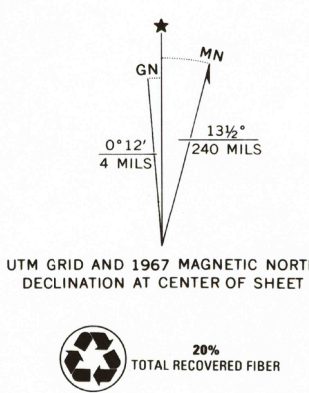
Topography by photogrammetric methods from aerial photographs taken 1966. Field checked 1967

Polyconic projection. 1927 North American Datum
10,000-foot grid based on Colorado coordinate system,
north zone, and Wyoming coordinate system, east zone
1000-meter Universal Transverse Mercator grid ticks, zone 13,
shown in blue

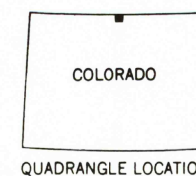
The difference between 1927 North American Datum and North
American Datum of 1983 (NAD 83) for 7.5 minute intersections is
given in USGS Bulletin 1875. The NAD 83 is shown by dashed
corner ticks

Fine red dashed lines indicate selected fence lines

T.12N., Sixth Principal Meridian, is duplicated in
Colorado and Wyoming



THIS MAP COMPLIES WITH NATIONAL MAP ACCURACY STANDARDS
FOR SALE BY U.S. GEOLOGICAL SURVEY, P.O. BOX 25286, DENVER, COLORADO 80225
A FOLDER DESCRIBING TOPOGRAPHIC MAPS AND SYMBOLS IS AVAILABLE ON REQUEST



ROAD CLASSIFICATION
Heavy-duty ——— Light-duty ———
Unimproved dirt - - - - -
U.S. Route

VIRGINIA DALE, COLO.-WYO.
4010543-TF-024

1967

DMA 4965 IV NE-SERIES V877

