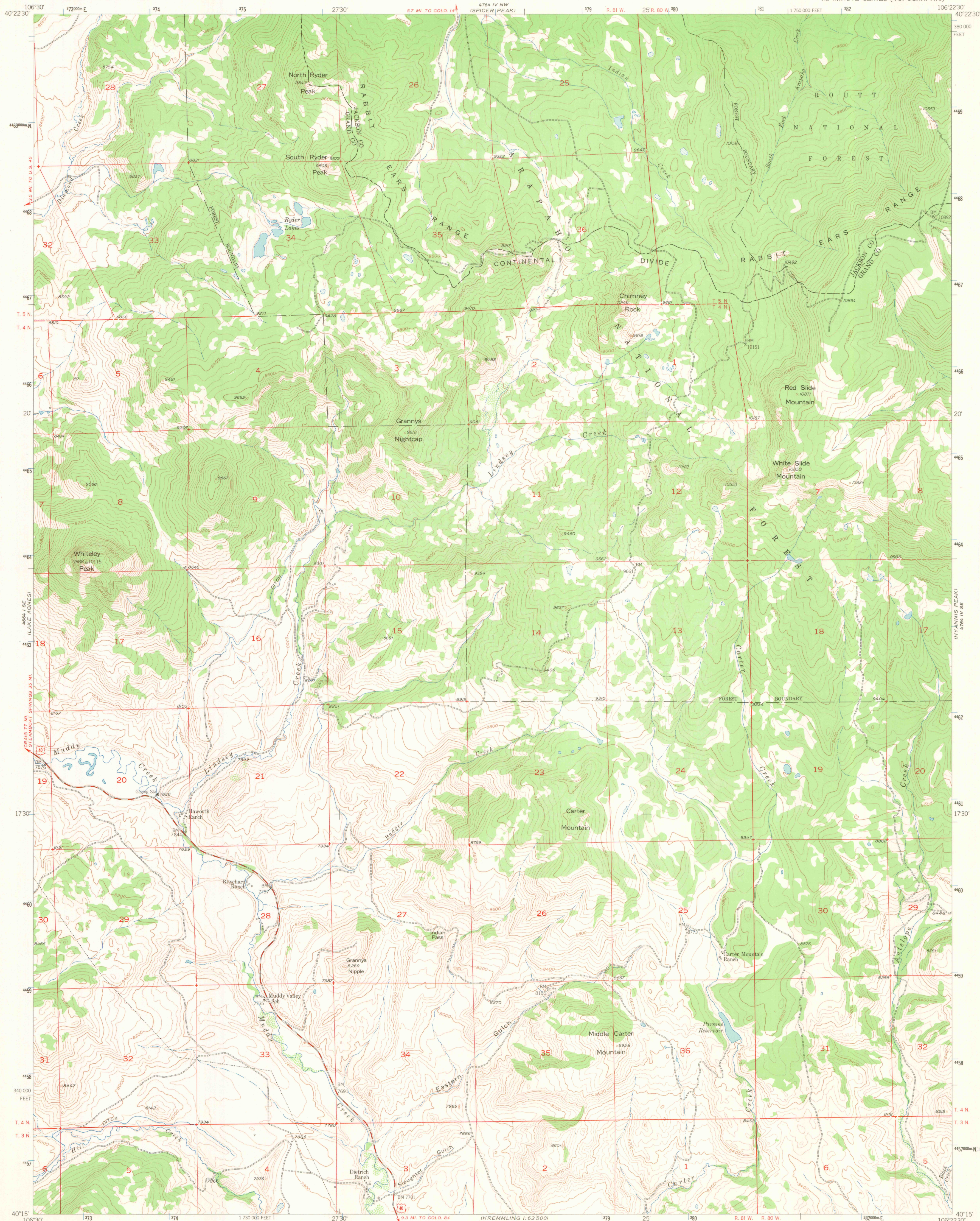


UNITED STATES
DEPARTMENT OF THE INTERIOR
GEOLOGICAL SURVEY

WHITELEY PEAK QUADRANGLE
COLORADO
7.5 MINUTE SERIES (TOPOGRAPHIC)

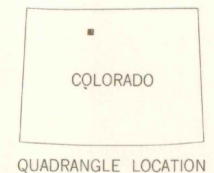
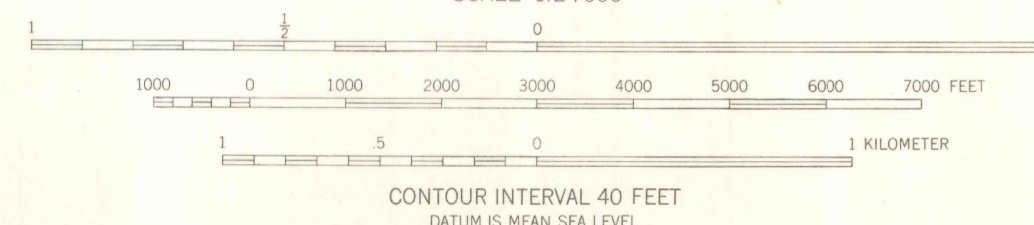
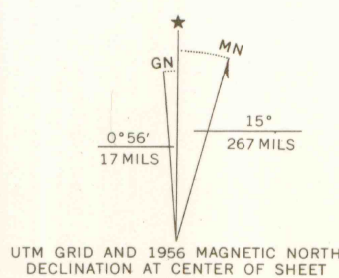


Mapped, edited, and published by the Geological Survey as part of the Department of the Interior program for the development of the Missouri River Basin Control by USGS and USC&GS.

Topography from aerial photographs by multiplex methods. Aerial photographs taken 1952. Field check 1956.

Polyconic projection. 1927 North American datum. 10,000-foot grid based on Colorado coordinate system, north zone. 1000-meter Universal Transverse Mercator grid ticks, zone 13, shown in blue.

Dashed land lines indicate approximate locations. Certain land lines are omitted in T. 4 and 5 N.-R. 80 W. because of insufficient data.



ROAD CLASSIFICATION

Medium-duty ——— Unimproved dirt ———

U.S. Route

WHITELEY PEAK, COLO.
N4015-W10622.5/7.5
1956
AMS 4764 IV SW-SERIES V877

THIS MAP COMPLIES WITH NATIONAL MAP ACCURACY STANDARDS
FOR SALE BY U. S. GEOLOGICAL SURVEY, DENVER 25, COLORADO OR WASHINGTON 25, D. C.
A FOLDER DESCRIBING TOPOGRAPHIC MAPS AND SYMBOLS IS AVAILABLE ON REQUEST

OFFICE COPY
LIBRARY USE ONLY

SEP 29 2004

ARLINGTON LIBRARY
ARLINGTON SCHOOL OF MINES

G 3700
s24
.G4
MAP ROOM