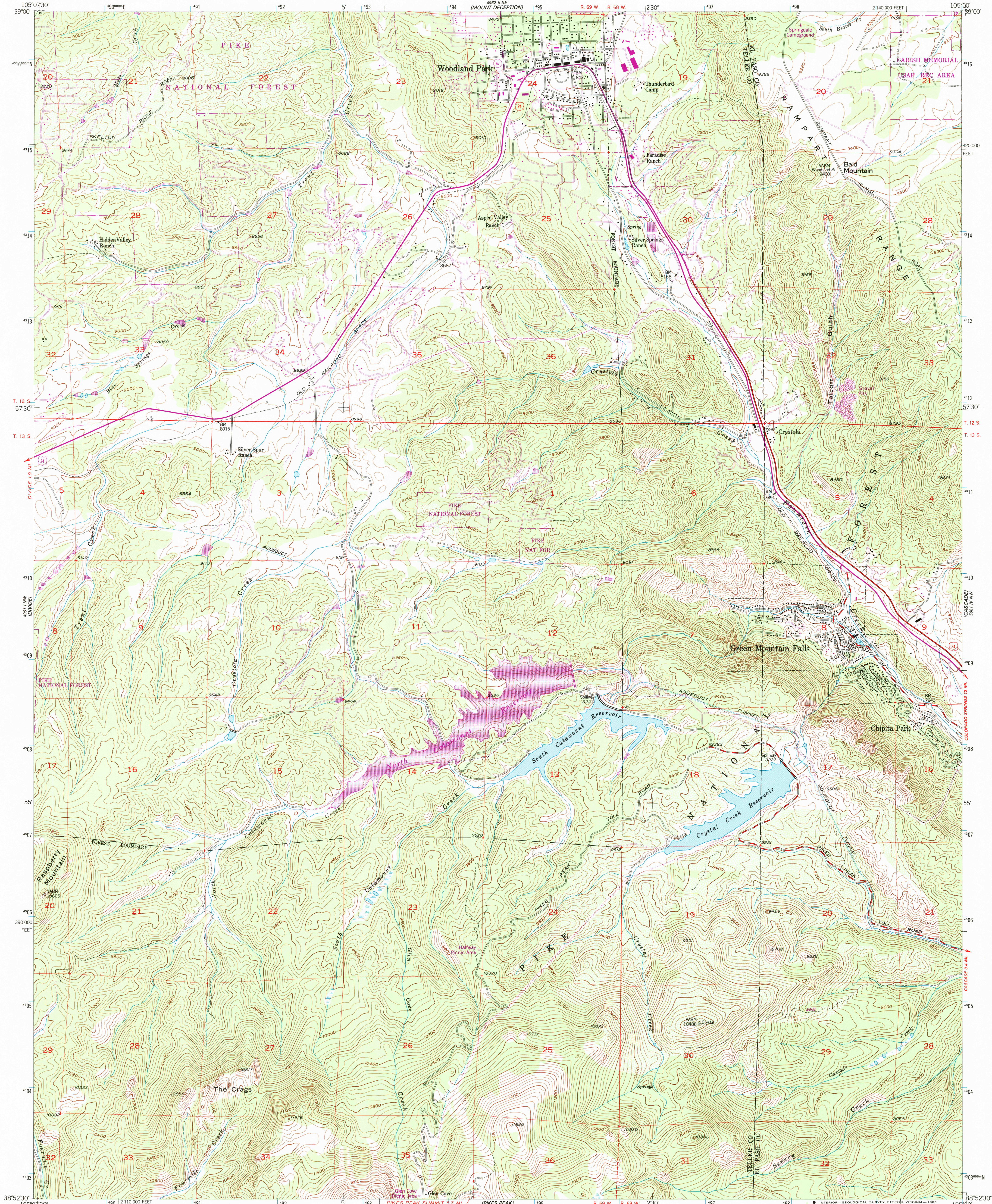


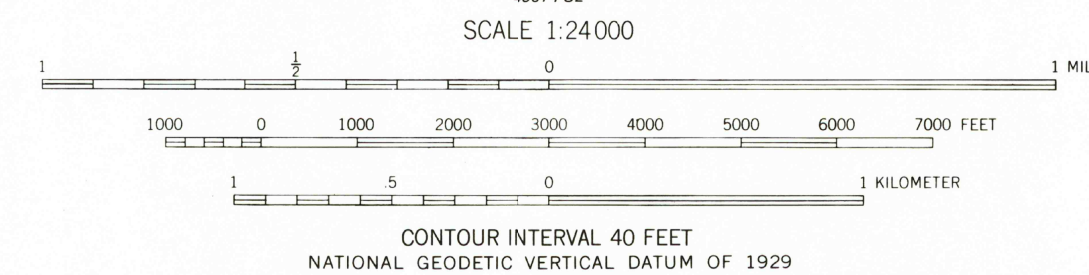
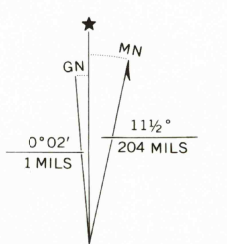
UNITED STATES  
DEPARTMENT OF THE INTERIOR  
GEOLOGICAL SURVEY

WOODLAND PARK QUADRANGLE  
COLORADO  
7.5 MINUTE SERIES (TOPOGRAPHIC)



Mapped, edited, and published by the Geological Survey  
Control by USGS and NOS/NOAA  
Topography from aerial photographs by multiplex methods  
Aerial photographs taken 1953. Field check 1954  
Polyconic projection, 1927 North American Datum  
10,000-foot grid based on Colorado coordinate system,  
central zone  
Dashed land lines indicate approximate locations  
1000-meter Universal Transverse Mercator grid ticks,  
zone 13, shown in blue  
There may be private inholdings within the boundaries  
of the National or State reservations shown on this map  
To place on the predicted North American Datum 1983  
move the projection lines 4 meters north and  
48 meters east as shown by dashed corner ticks

Revisions shown in purple and woodland compiled from  
aerial photographs taken 1983 and other source data  
Partial field check by U. S. Forest Service. Map edited 1985



ROAD CLASSIFICATION  
Primary highway, hard surface  
Secondary highway, hard surface  
Unimproved road  
Interstate Route  
U. S. Route  
State Route  
Light-duty road, hard or improved surface  
Unimproved road  
Interstate Route  
U. S. Route  
State Route

WOODLAND PARK, COLO.  
38105-H1-TF-024  
1954  
PHOTOREVISED 1985  
DMA 4961 1 NE-SERIES V877

