

DELTA, COLORADO

30X60 MINUTE SERIES (TOPOGRAPHIC)

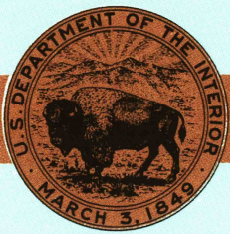
1:100 000-scale metric  
topographic map of

Delta  
COLORADO



30 X 60 MINUTE QUADRANGLE  
SHOWING

- Contours and elevations in meters
- Highways, roads and other manmade structures
- Water features
- Woodland areas
- Geographic names



GEOLOGICAL FILE SURVEY

1980

Produced by the United States Geological Survey  
in cooperation with the Soil Conservation Service

Compiled from USGS 1:24 000-scale topographic maps  
dated 1960-1973. Partially revised from aerial  
photographs taken 1976 and other source data.  
Revised information not field checked.  
Map edited 1980.

Projection and 10 000-meter grid, zone 12  
Universal Transverse Mercator  
25 000-foot grid ticks based on Colorado coordinate  
system, central and south zones. 1927 North American datum  
To place on the predicted North American Datum 1983 move  
the projection lines 5 meters south and 57 meters east.  
There may be private inholdings within the boundaries of  
the National or State reservations on this map.

CONTOUR INTERVAL 50 METERS

NATIONAL GEODETIC VERTICAL DATUM OF 1929

THIS MAP COMPLIES WITH NATIONAL MAP ACCURACY STANDARDS

FOR SALE BY U.S. GEOLOGICAL SURVEY  
DENVER, COLORADO 80225, OR RESTON, VIRGINIA 22092

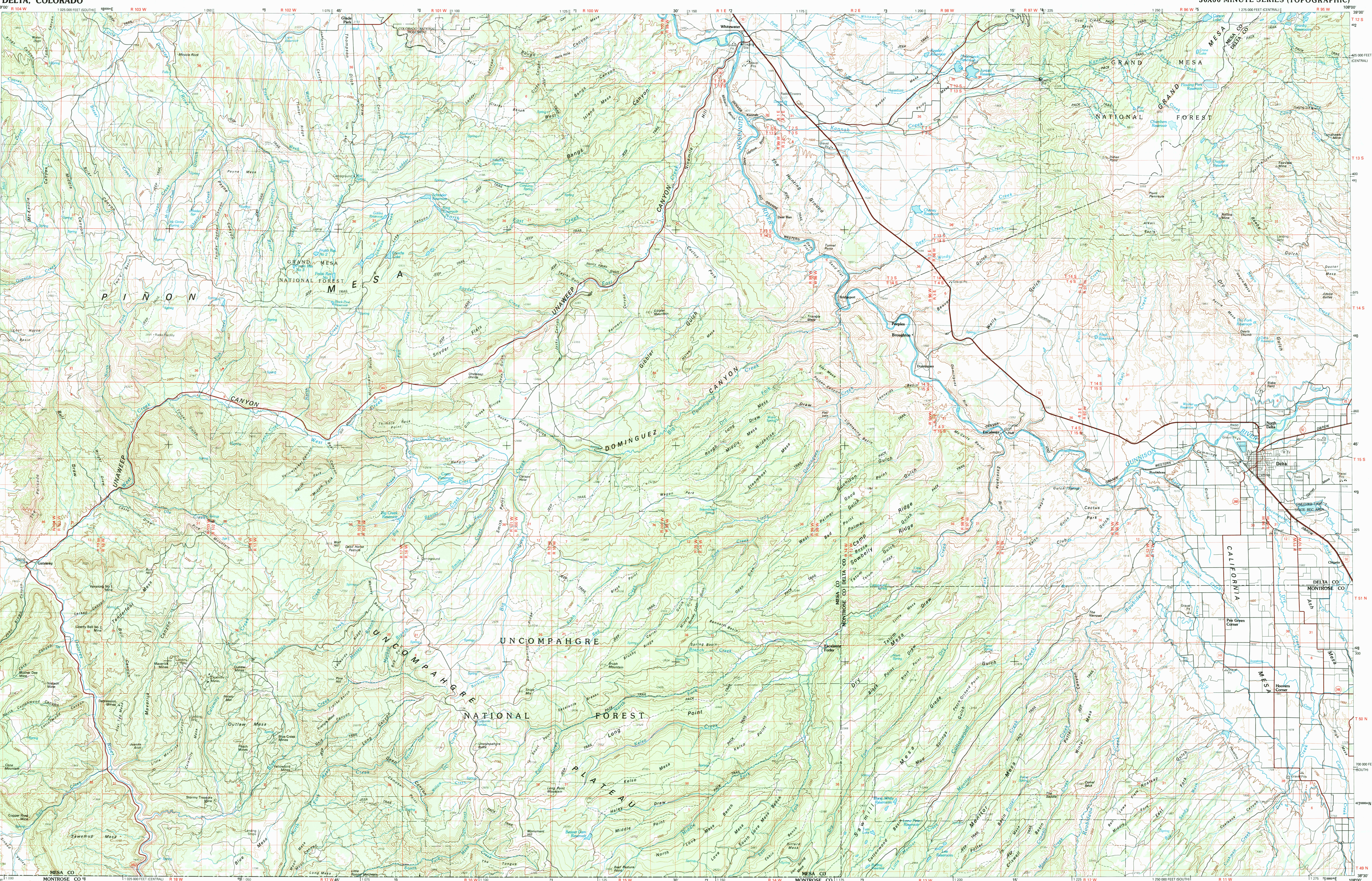
CONVERSION TABLE		DECLINATION DIAGRAM	ADJOINING MAPS			
Meters	Feet		1	2	3	
1	32808		1	2	3	
2	65617		4	5		
3	98425		6	7	8	
4	131234					
5	164042					
6	196850					
7	229659					
8	262467					
9	295276					
10	328084					
To convert meters to feet multiply by 3.2808		UTM grid convergence (GN) and 1980 magnetic declination (MN) at center of map. Diagram is approximate.				
To convert feet to meters multiply by 0.3048						



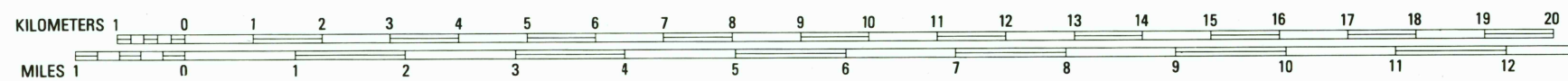
Topographic Map Symbols

Primary highway, hard surface	
Secondary highway, hard surface	
Light duty road, principal street, hard or improved surface	
Other road or street, gravel, hard or improved surface	
Route marker, Interstate; U. S.; State	
Railroad: standard gage; narrow gage	
Bridge; overpass; underpass	
Tunnel: road, railroad	
Built up area; locality; elevation	
Airport; landing field; landing strip	
National boundary	
State boundary	
County boundary	
National or State reservation boundary	
Land grant boundary	
U. S. public lands survey; range, township; section	
Range, township; section line; protracted	
Power transmission line; pipeline	
Dam; dam with lock	
Cemetery; building	
Windmill; water well; spring	
Mine shaft; salt or cave; mine, quarry; gravel pit	
Campground; picnic area; U. S. location monument	
Ruins; cliff dwelling	
Distorted surface: strip mine, lava; sand	
Contours: index; intermediate; supplementary	
Bathymetric contours: index; intermediate	
Stream, lake; perennial; intermittent	
Rapids, large and small; falls, large and small	
Area to be submerged; marsh, swamp	
Land subject to controlled inundation; woodland	
Sand; mangrove	
Drained; vineyard	

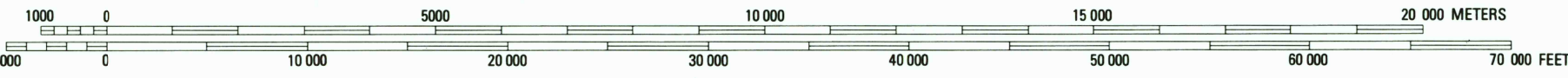
A pamphlet describing topographic maps is available on request



INTERIOR—GEOLOGICAL SURVEY, RESTON, VIRGINIA—1800



SCALE 1:100 000  
1 CENTIMETER ON THE MAP REPRESENTS 1 KILOMETER ON THE GROUND  
CONTOUR INTERVAL 50 METERS



DELTA, COLORADO  
N3830-W10800/30x60

1980