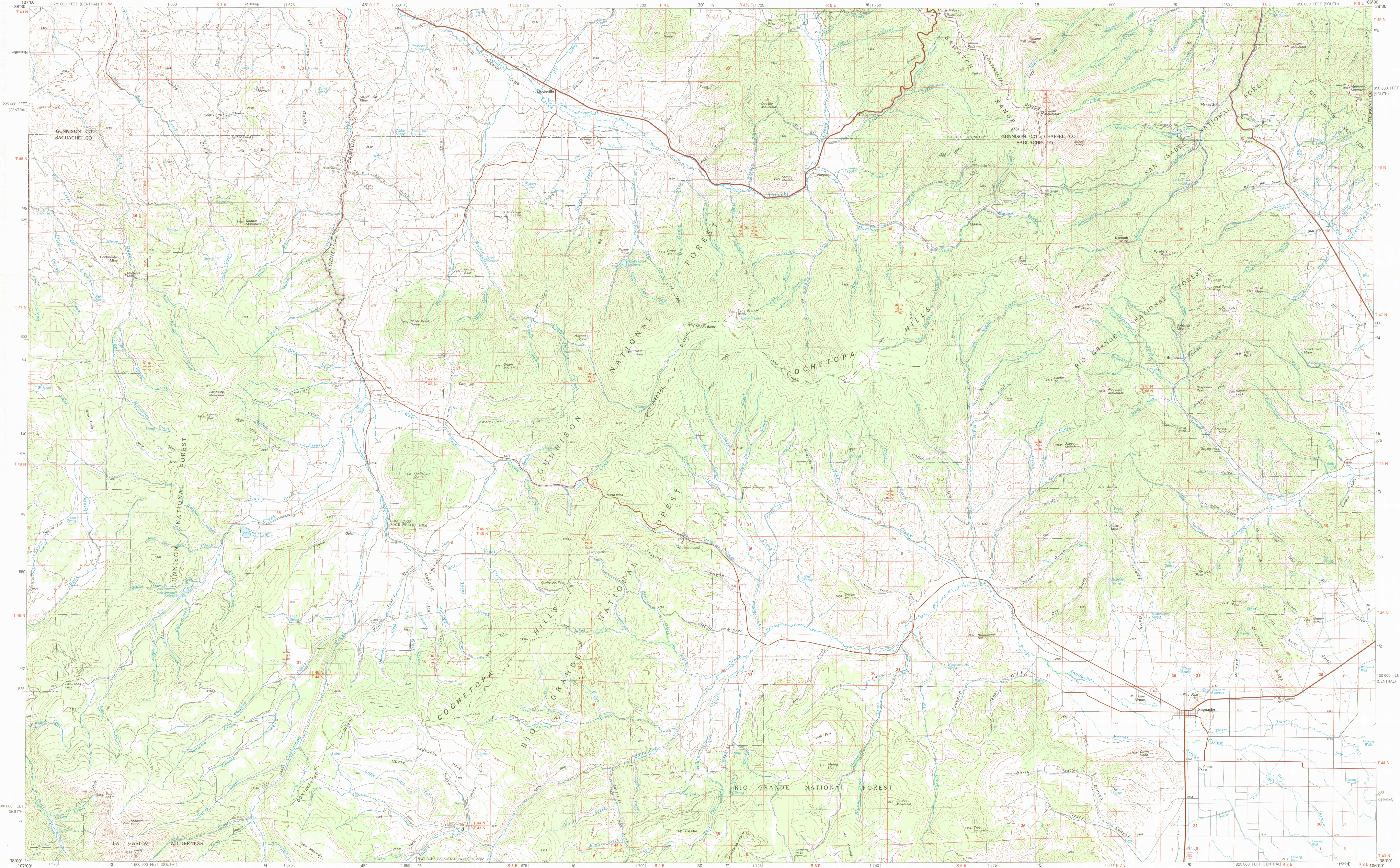
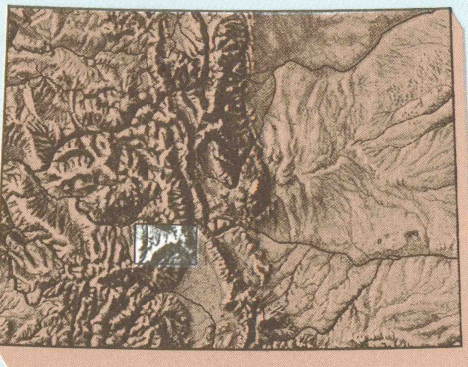


SAGUACHE, COLORADO

30X60 MINUTE SERIES (TOPOGRAPHIC)

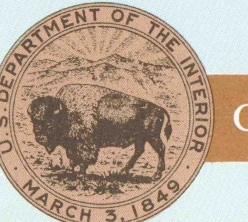


1:100 000-scale metric
topographic map of
Saguache
COLORADO



30 X 60 MINUTE QUADRANGLE
SHOWING

- Contours and elevations in meters
- Highways, roads and other manmade structures
- Water features
- Woodland areas
- Geographic names



GEOLOGICAL SURVEY

1982

Produced by the United States Geological Survey
Compiled from USGS 1:250 000-scale topographic maps dated 1954-1960. Partially revised from aerial photographs taken 1979 and other source data. Revised information not field checked. Map edited 1982.

Projection and 10 000-meter grid, zone 13 Universal Transverse Mercator. 25 000-foot grid ticks based on Colorado coordinate system, south and central zones. 1927 North American datum. To place on the predicted North American Datum 1983 move the projection lines 4 meters north and 52 meters east. Certain land lines are omitted because of insufficient data. There may be private inholdings within the boundaries of the National or State reservations shown on this map.

CONTOUR INTERVAL 50 METERS
NATIONAL GEODETIC VERTICAL DATUM OF 1929

THIS MAP COMPLIES WITH NATIONAL MAP ACCURACY STANDARDS

| CONVERSION TABLE | | DECLINATION DIAGRAM | ADJOINING MAPS |
|--|---------|--|--|
| Meters | Feet | | 1 2 3 |
| 1 | 3.2808 | | 4 5 6 |
| 2 | 6.5617 | | 7 8 |
| 3 | 9.8424 | | |
| 4 | 13.1234 | | |
| 5 | 16.4042 | | |
| 6 | 19.6850 | | |
| 7 | 22.9659 | | |
| 8 | 26.2467 | | |
| 9 | 29.5276 | | |
| 10 | 32.8084 | | |
| To convert meters to feet multiply by 3.2808 | | UTM grid convergence (GN and 1982 magnetic declination (MAG) at center of map. Diagram is approximate. | 1 Poonia 2 Gensetion 3 Pikes Peak 4 Montrose 5 Canon City 6 Silverton 7 Del Norte 8 Blanca Peak |
| To convert feet to meters multiply by 0.3048 | | | |

FOR SALE BY U.S. GEOLOGICAL SURVEY, DENVER, COLORADO 80225 OR RESTON, VIRGINIA 22092

Topographic Map Symbols

| | |
|---|--|
| Primary highway, hard surface | |
| Secondary highway, hard surface | |
| Light duty road, principal street, hard or improved surface | |
| Other road or street, trail | |
| Route marker: Interstate, U.S., State | |
| Railroad, standard gauge, narrow gauge | |
| Bridge, overpass, underpass | |
| Tunnel: road, railroad | |
| Built up area, locality, elevation | |
| Airport, landing field, landing strip | |
| National boundary | |
| State boundary | |
| County boundary | |
| National or State reservation boundary | |
| Land grant boundary | |
| U.S. public lands survey, range, township, section | |
| Range, township, section line, protected | |
| Power transmission line, pipeline | |
| Dam, dam with lock | |
| Cemetery, building | |
| Wellhead, water well, spring | |
| Mine shaft, adit or cave, mine, quarry, gravel pit | |
| Campground, picnic area, U.S. location monument | |
| Ruin, cliff dwelling | |
| Distorted surface: strip mine, lava, sand | |
| Contour: index, intermediate, supplementary | |
| Bathymetric contours: index, intermediate | |
| Stream, lake: perennial, intermittent | |
| Rapids, large and small; falls, large and small | |
| Area to be submerged; marsh, swamp | |
| Land subject to controlled inundation, woodland | |
| Scrub, mangrove | |
| Orchard, vineyard | |

A pamphlet describing topographic maps is available on request

U.S. GEOLOGICAL SURVEY
1:100 000-scale metric
topographic map of
Saguache
COLORADO

SAGUACHE, COLORADO

N3800-W10600/30x60

1982