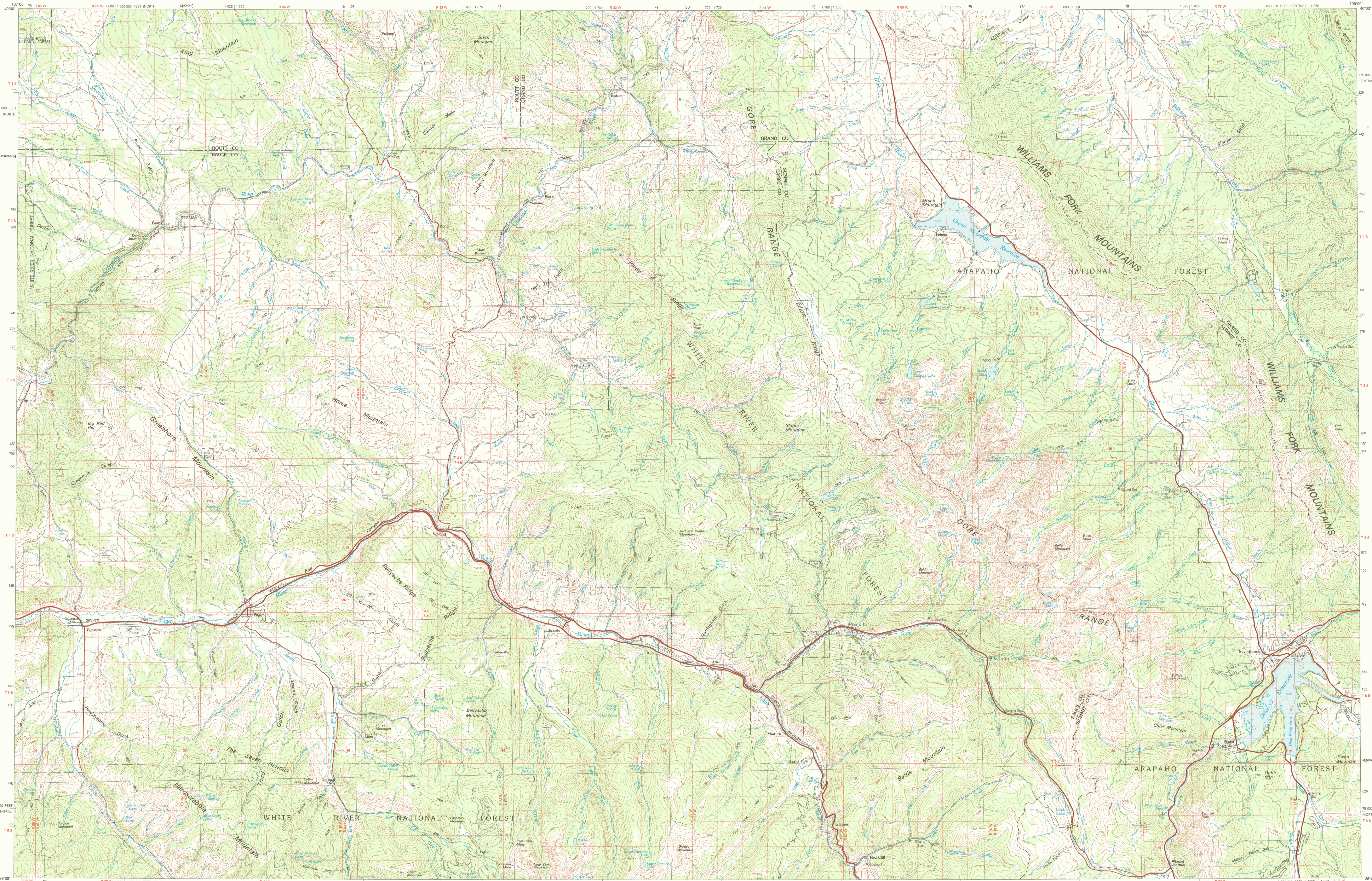
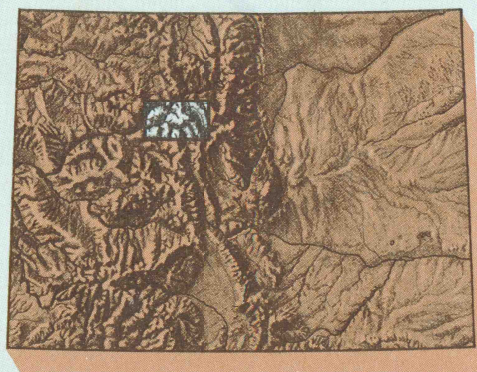


VAIL, COLORADO

30 X 60 MINUTE SERIES (TOPOGRAPHIC)

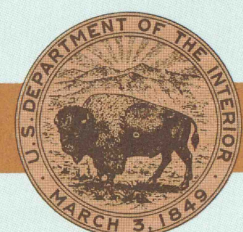


1:100 000-scale metric
topographic map of
VAIL
COLORADO



30 X 60 MINUTE QUADRANGLE
SHOWING

- Contours and elevations in meters
- Highways, roads and other manmade structures
- Water features
- Woodland areas
- Geographic names



GEOLOGICAL SURVEY

1980

Produced by the United States Geological Survey
Compiled from USGS 1:50 000-scale topographic maps dated 1975-1978. Map edited 1980.
Projection and 10 000-meter grid, zone 13: Universal Transverse Mercator
25 000-foot grid ticks based on Colorado coordinate system, north and central zones
1927 North American Datum
To place on the predicted North American Datum 1983 move the projection lines 5 meters north and 52 meters east
There may be private inholdings within the boundaries of the National or State reservations shown on this map

CONTOUR INTERVAL 50 METERS
NATIONAL GEODETIC VERTICAL DATUM OF 1929
ELEVATIONS SHOWN TO THE NEAREST METRE



THIS MAP COMPLIES WITH NATIONAL MAP ACCURACY STANDARDS
APR 25 2003

CONVERSION TABLE | Meters | Feet | |--------|---------| | 1 | 3.2808 | | 2 | 6.5617 | | 3 | 9.8425 | | 4 | 13.1234 | | 5 | 16.4042 | | 6 | 19.6850 | | 7 | 22.9658 | | 8 | 26.2467 | | 9 | 29.5275 | | 10 | 32.8084 | To convert meters to feet multiply by 3.2808 To convert feet to meters multiply by 0.3048 DECLINATION DIAGRAM The diagram shows three vertical lines representing North directions. The leftmost line is labeled 'M' (Magnetic). The middle line is labeled 'G' (Grid). The rightmost line is labeled 'T' (True). An arc between M and G is labeled '12° 15''. An arc between G and T is labeled '22° 15''. The total angle between M and T is 34° 30'.

ADJOINING MAPS

1	2	3
4	5	
6	7	8

To convert meters to feet multiply by 3.2808

To convert feet to meters multiply by 0.3048

UTM grid convergence (GN) and 1983 magnetic declination (MD) at center of map

Diagram is approximate

1 Mosher

2 Steamboat Springs

3 Estes Park

4 Glenwood Springs

5 Denver West

6 Carbondale

7 Leadville

8 Bailey

FOR SALE BY U.S. GEOLOGICAL SURVEY,
DENVER, COLORADO 80225, OR RESTON, VIRGINIA 22092

Topographic Map Symbols

Primary highway, hard surface	
Secondary highway, hard surface	
Light duty road, principal street, hard or improved surface	
Other road or street, trail	
Route marker: Interstate, U. S.; State	
Railroad: standard gauge, narrow gauge	
Bridge: overpass, underpass	
Tunnel: road, railroad	
Built up area, locality, elevation	
Airport; landing field; landing strip	
National boundary	
State boundary	
County boundary	
National or State reservation boundary	
Land grant boundary	
U. S. public lands survey: range, township; section	
Pump; township; section line; protected	
Power transmission line; pipeline	
Dam; dam with lock	
Cemetery; building	
Windmill; water well; spring	
Mine shaft; adit or cave; mine, quarry; gravel pit	
Campground; picnic area; U. S. location monument	
Rune; cliff dwelling	
Distorted surface: strip mine, lava, sand	
Contours: index; intermediate; supplementary	
Bathymetric contours: index; intermediate	
Stream, lake, reservoir; intermittent	
Rapids, large and small; falls, large and small	
Area to be submerged; marsh, swamp	
Land subject to controlled inundation; woodland	
Scrub; mangrove	
Drainage; vineyard	

A pamphlet describing topographic maps is available on request

OFFICE COPY
LIBRARY USE ONLY

G 3700
S100
G4
MAP ROOM

VAIL, COLORADO
N3930-W10600/30 X 60

1980