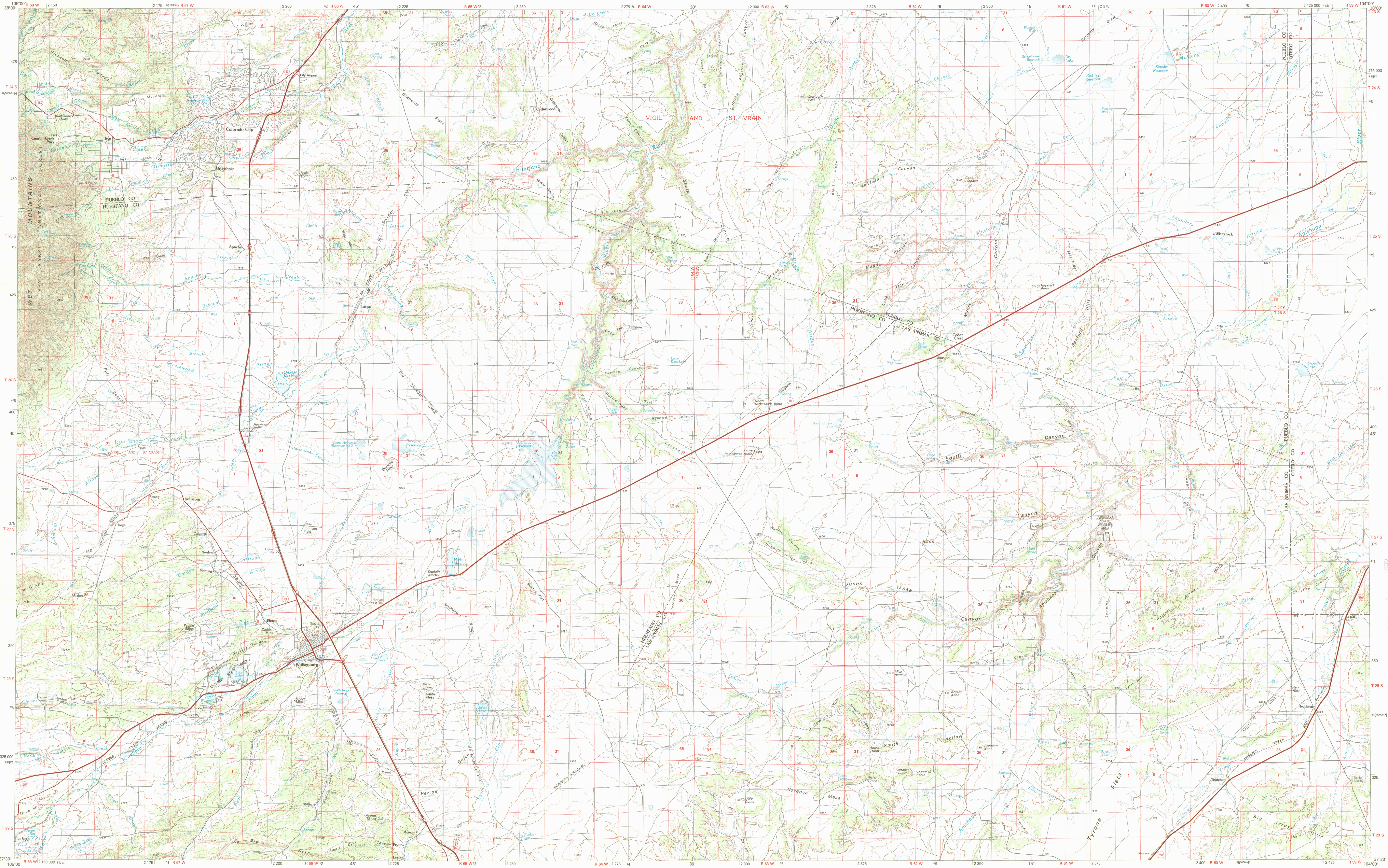
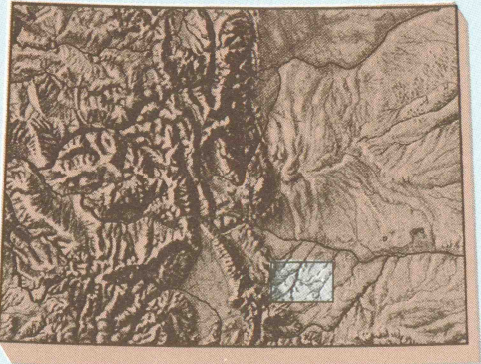


WALSENBURG, COLORADO

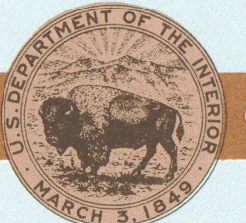


1:100 000-scale metric
topographic map of
Walsenburg
COLORADO



30 X 60 MINUTE QUADRANGLE
SHOWING

- Contours and elevations in meters
- Highways, roads and other manmade structures
- Water features
- Woodland areas
- Geographic names



GEOLOGICAL SURVEY

1982

Produced by the United States Geological Survey

Compiled from USGS 1:24 000-scale topographic maps dated 1963-1971. Partially revised from aerial photographs taken 1979 and other source data. Revised information not field checked. Map edited 1982.
Projection and 10 000-meter grid, zone 13
Universal Transverse Mercator
25 000-foot grid ticks based on Colorado coordinate system, south zone, 1927 North American datum
To place on the predicted North American Datum 1983 move the projection lines 2 meters north and 47 meters east
There may be private inholdings within the boundaries of the National or State reservations shown on this map

CONTOUR INTERVAL 20 METERS
NATIONAL GEODETIC VERTICAL DATUM OF 1929

THIS MAP COMPLIES WITH NATIONAL MAP ACCURACY STANDARDS

CONVERSION TABLE		DECLINATION DIAGRAM		ADJOINING MAPS		
Meters	Feet	Magnetic Declination		1	2	3
1	3.2808	11°12' 264 MILES		4	5	
10	32.808	0°18' 5 MILES		6	7	8
100	328.08	To convert meters to feet multiply by 3.2808		1 Canon City Pueblo		
1000	3280.8	To convert feet to meters multiply by 0.3048		2 Las Animas		
		UTM grid convergence (GN) and 1982 magnetic declination (MD) at center of map diagram is approximate		3 La Junta		
				4 Alamogordo		
				5 Trinidad		
				6 Kim		

FOR SALE BY U. S. GEOLOGICAL SURVEY, DENVER, COLORADO 80225 OR RESTON, VIRGINIA 22092

Topographic Map Symbols

Primary highway, hard surface	Secondary highway, hard surface	Light duty road, principal street, hard or improved surface	Other road or street, road	Route marker: Interstate: U. S. State	Railroad: standard gage; narrow gage	Bridge: overpass; underpass	Tunnel: road; railroad	Bank up area; locality, elevation	Airport: landing field; landing strip	National boundary	County boundary	National or State reservation boundary	Land grant boundary	U. S. public lands survey: range, township, section	Range, township; section line: protracted	Power transmission line: pipeline	Dam; dam with lock	Cemetery; building	Woodmill; water well; spring	Mine shaft; edit or cave; mine; quarry; gravel pit	Campground; picnic area; U. S. location monument	Ruins; cliff dwelling	Disturbed surface: strip mine, lava, sand	Contours: index; intermediate; supplementary	Bathymetric contours: index; intermediate	Stream, lake: perennial; intermittent	Rapids, large and small; falls, large and small	Area to be submerged; marsh, swamp	Land subject to controlled inundation; woodland	Scrub; mangrove	Orchard; vineyard
-------------------------------	---------------------------------	---	----------------------------	---------------------------------------	--------------------------------------	-----------------------------	------------------------	-----------------------------------	---------------------------------------	-------------------	-----------------	--	---------------------	---	---	-----------------------------------	--------------------	--------------------	------------------------------	--	--	-----------------------	---	--	---	---------------------------------------	---	------------------------------------	---	-----------------	-------------------

WALSENBURG, COLORADO
N3730-W10400/30x60

1982

A pamphlet describing topographic maps is available on request
G 3700
S100
G4
MAP ROOM