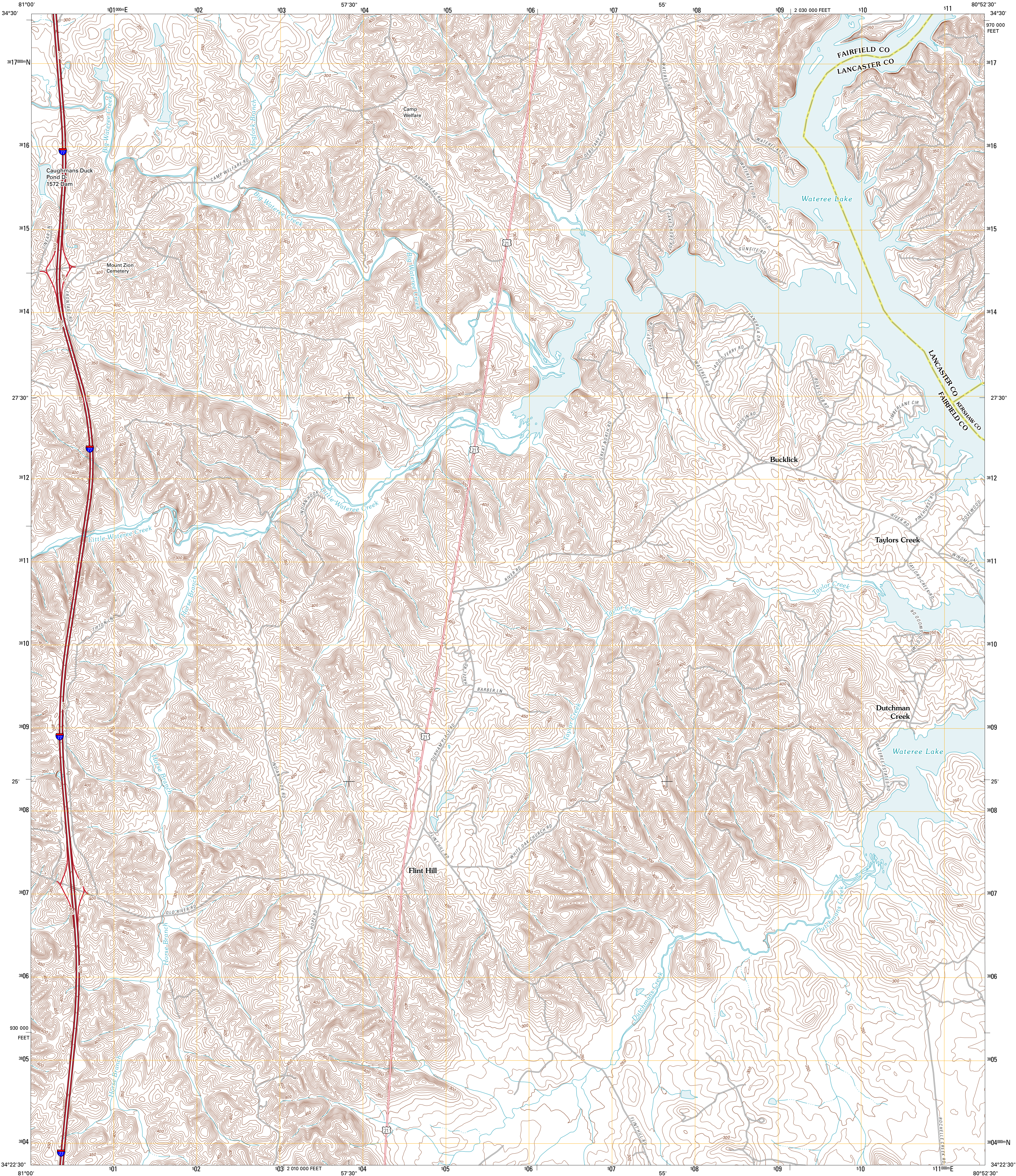




U.S. DEPARTMENT OF THE INTERIOR
U. S. GEOLOGICAL SURVEY

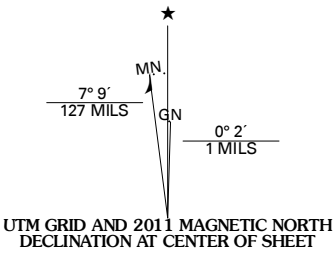


FLINT HILL QUADRANGLE
SOUTH CAROLINA
7.5-MINUTE SERIES

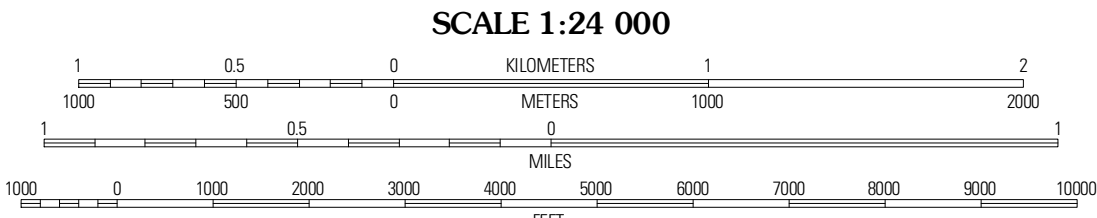


Produced by the United States Geological Survey
North American Datum of 1983 (NAD83)
World Geodetic System of 1984 (WGS84). Projection and
1 000-meter grid: Universal Transverse Mercator, Zone 17S
10 000-foot ticks: South Carolina Coordinate System of 1983

Imagery.....NAIP, April 2009
Roads.....©2006-2010 Tele Atlas
Names.....GNIS, 2010
Hydrography.....National Hydrography Dataset, 2009
Contours.....National Elevation Dataset, 2009
Boundaries.....Census, IBWC, IBC, USGS, 1972-2010



| |
|-----------------------|
| U.S. National Grid |
| 100,000-m Square ID |
| NU |
| Grid Zone Designation |
| 17S |



CONTOUR INTERVAL 10 FEET
NORTH AMERICAN VERTICAL DATUM OF 1988
This map was produced to conform with version 0.5.10
of the USGS US Topo Product Standard.
A metadata file associated with this product is draft version 0.5.16



| QUADRANGLE LOCATION | | |
|---------------------|-------------|--------------|
| Stover | Great Falls | Lancaster SE |
| Windsboro | Flint Hill | Liberty Hill |
| Windsboro Mills | Ridgeway | Longtown |

ADJOINING 7.5 QUADRANGLES

| ROAD CLASSIFICATION | |
|---------------------|-------------|
| Interstate Route | State Route |
| US Route | Local Road |
| Ramp | 4WD |
| | |
| | |

FLINT HILL, SC
2011