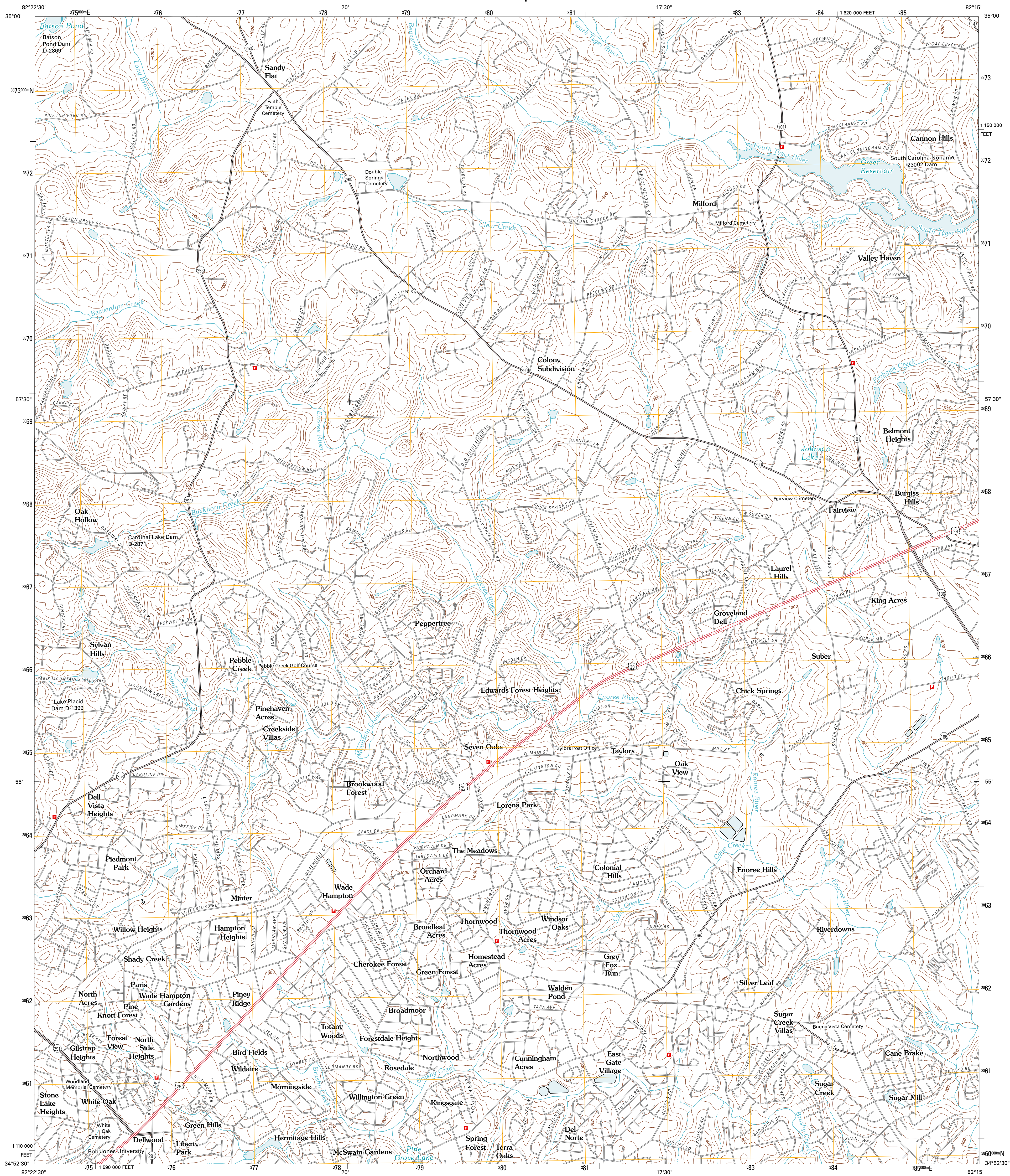




U.S. DEPARTMENT OF THE INTERIOR
U. S. GEOLOGICAL SURVEY

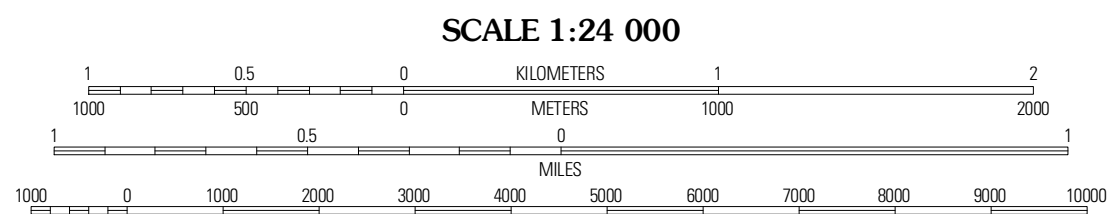


TAYLORS QUADRANGLE
SOUTH CAROLINA-GREENVILLE CO.
7.5-MINUTE SERIES



Produced by the United States Geological Survey
North American Datum of 1983 (NAD83)
World Geodetic System of 1984 (WGS84). Projection and
1 000-meter grid: Universal Transverse Mercator, Zone 17S
10 000-foot ticks: South Carolina Coordinate System of 1983

UTM GRID AND 2011 MAGNETIC NORTH
DECLINATION AT CENTER OF SHEET



CONTOUR INTERVAL 20 FEET
NORTH AMERICAN VERTICAL DATUM OF 1988
This map was produced to conform with version 0.5.10
of the USGS US Topo Product Standard.
A metadata file associated with this product is draft version 0.5.16



ROAD CLASSIFICATION
Interstate Route
US Route
Ramp
State Route
Local Road
4WD

Stater	Tiger	Campbell
Paris Mountain	Taylor	Greer
Greenville	Mauldin	Pelham

ADJOINING 7.5 QUADRANGLES

TAYLORS, SC
2011