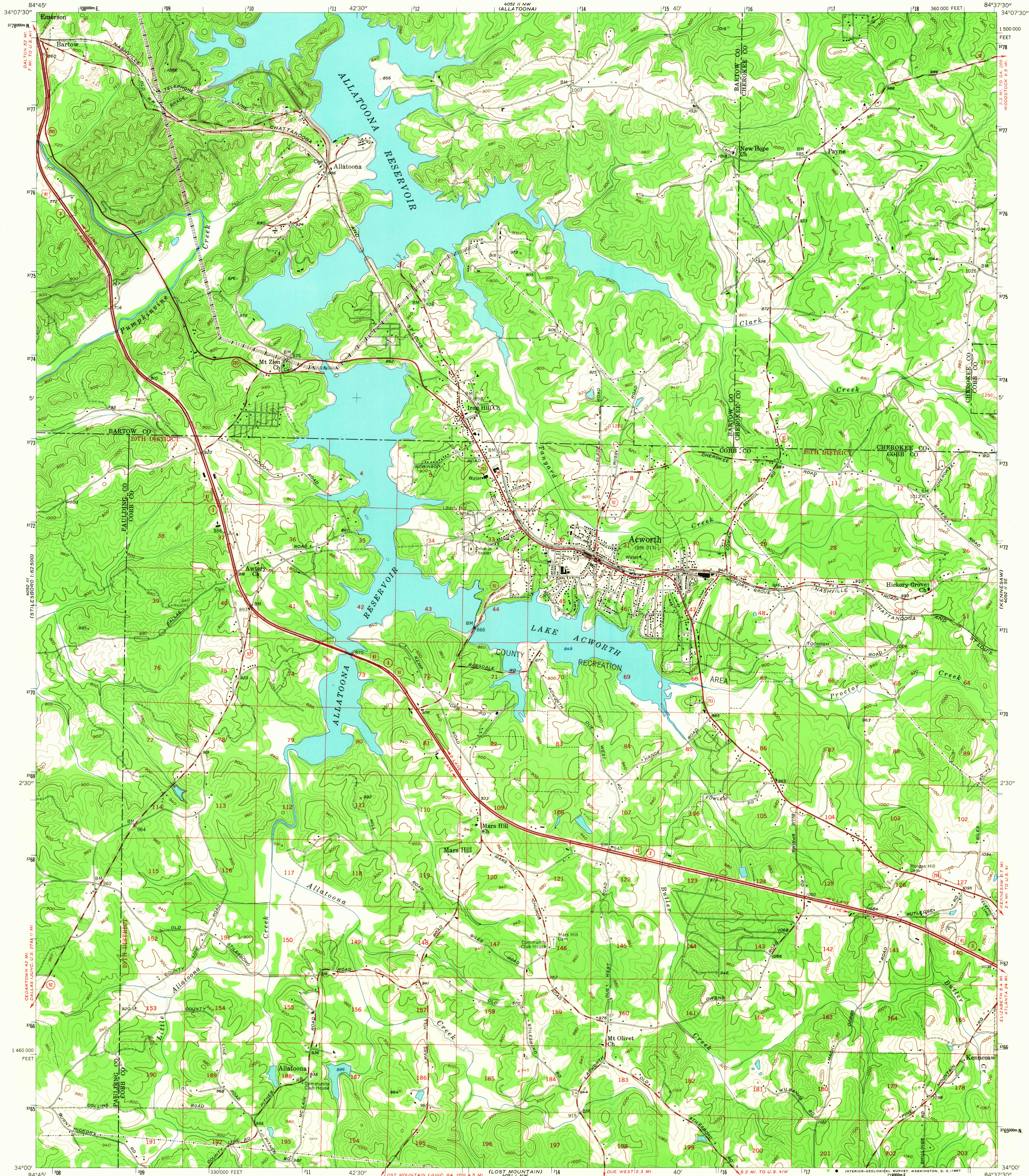


UNITED STATES
DEPARTMENT OF THE INTERIOR
GEOLOGICAL SURVEY

ACWORTH QUADRANGLE
GEORGIA
7.5 MINUTE SERIES (TOPOGRAPHIC)
SW 1/4 ACWORTH 15' QUADRANGLE



Mapped, edited, and published by the Geological Survey

Control by USGS, USC&GS, and Georgia Geodetic Survey

Topography from aerial photographs by Kesh plotter

Aerial photographs taken 1955. Field check 1956

Polyconic projection. 1927 North American datum

10,000-foot grid based on Georgia coordinate system,

west zone. 1,000-meter Universal Transverse Mercator

grid ticks, zone 16, shown in blue

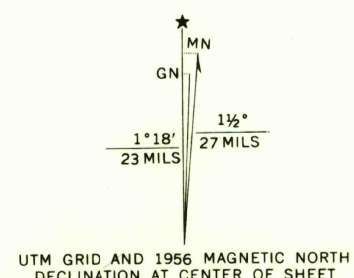
Unchecked elevations are shown in brown

Land lines from information supplied by

Cobb County Roads and Revenues Commission

Fine red dashed lines indicate selected fence and field lines

visible on aerial photographs. This information is unchecked



SCALE 1:24,000

CONTOUR INTERVAL 20 FEET

DATUM IS MEAN SEA LEVEL

THIS MAP COMPLIES WITH NATIONAL MAP ACCURACY STANDARDS
FOR SALE BY U.S. GEOLOGICAL SURVEY, WASHINGTON, D. C. 20242
A FOLDER DESCRIBING TOPOGRAPHIC MAPS AND SYMBOLS IS AVAILABLE ON REQUEST

USGS
Historical File
Topographic Division



ROAD CLASSIFICATION
Heavy-duty ——— Light-duty ———
Medium-duty ——— Unimproved dirt ———
U. S. Route —○— State Route —○—

ACWORTH, GA.

SW 1/4 ACWORTH 15' QUADRANGLE

N 3400—W 8437.5/7.5

1956

AMS 4052 II SW—SERIES V845

2765

OCT 11 1967