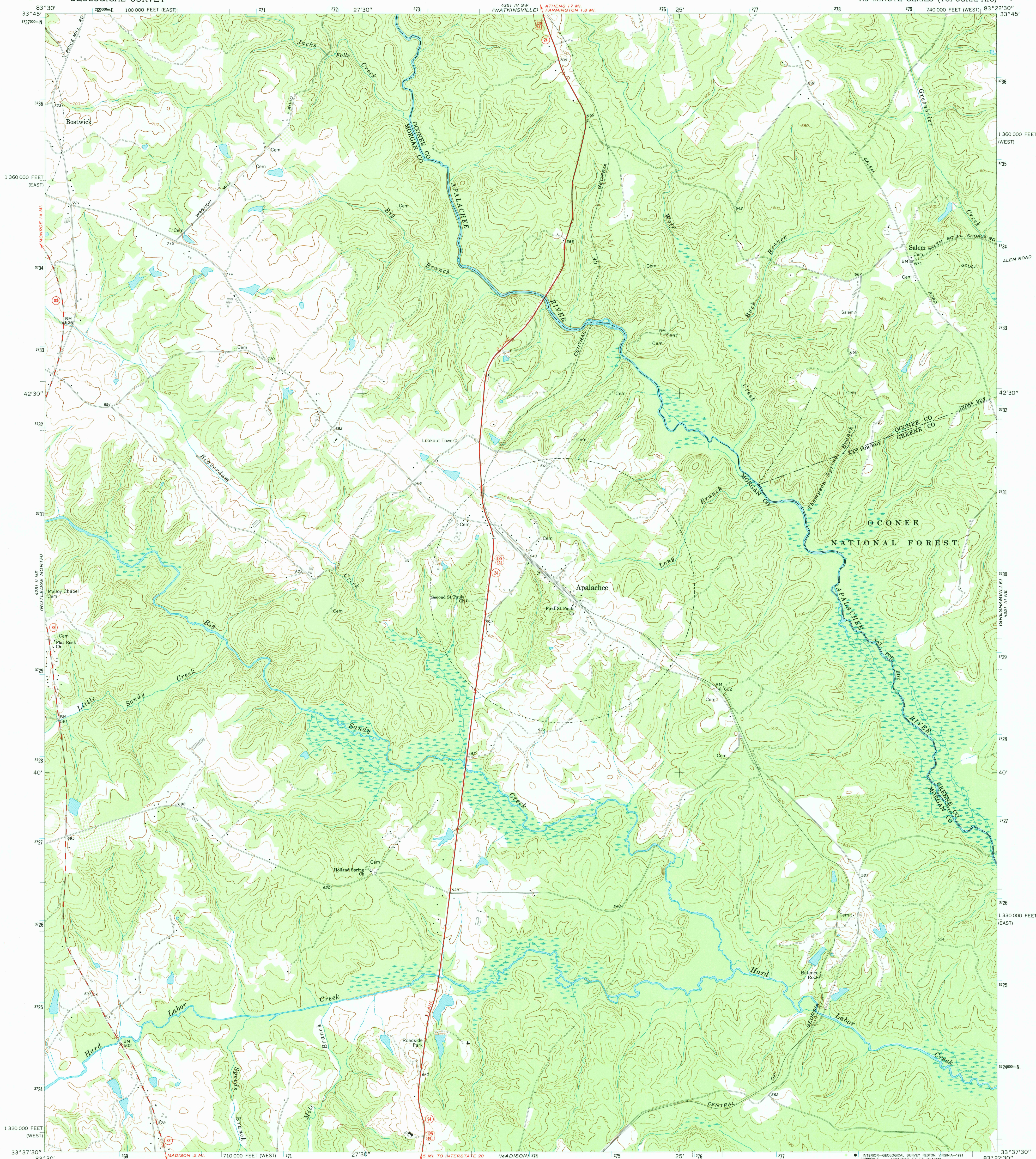


UNITED STATES
DEPARTMENT OF THE INTERIOR
GEOLOGICAL SURVEY

APALACHEE QUADRANGLE
GEORGIA
7.5 MINUTE SERIES (TOPOGRAPHIC)



Mapped, edited, and published by the Geological Survey

Control by USGS and USC&GS

Topography by photogrammetric methods from aerial photographs taken 1971. Field checked 1972

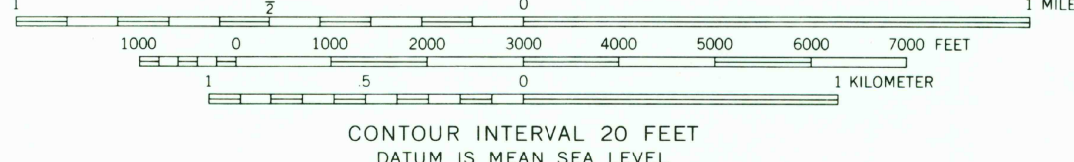
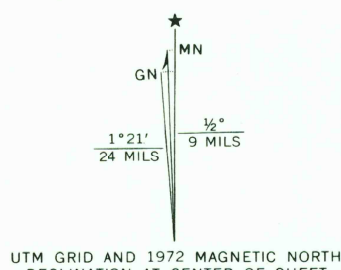
Projection: Georgia coordinate system, west zone (transverse Mercator)

10,000-foot grid ticks, based on Georgia coordinate system, west and east zones

1000-meter Universal Transverse Mercator grid ticks, zone 17, shown in blue. 1927 North American datum

Fine red dashed lines indicate selected fence and field lines where generally visible on aerial photographs. This information is unchecked

Map photoreinspected 1981
No major culture or drainage changes observed



CONTOUR INTERVAL 20 FEET
DATUM IS MEAN SEA LEVEL

THIS MAP COMPLIES WITH NATIONAL MAP ACCURACY STANDARDS
FOR SALE BY U.S. GEOLOGICAL SURVEY
DENVER, COLORADO 80225, OR RESTON, VIRGINIA 22092
A FOLDER DESCRIBING TOPOGRAPHIC MAPS AND SYMBOLS IS AVAILABLE ON REQUEST



QUADRANGLE LOCATION

ROAD CLASSIFICATION	
Primary highway, hard surface	Light-duty road, hard or improved surface
Secondary highway, hard surface	Unimproved road
Interstate Route	U. S. Route
	State Route

USGS NMD HISTORICAL MAP

JUL 8 1991

REC'D FILE COPY

APALACHEE, GA.
N3337.5—W8322.5/7.5

1972
PHOTOINSPECTED 1981
AMS 4351 III NW—SERIES V845