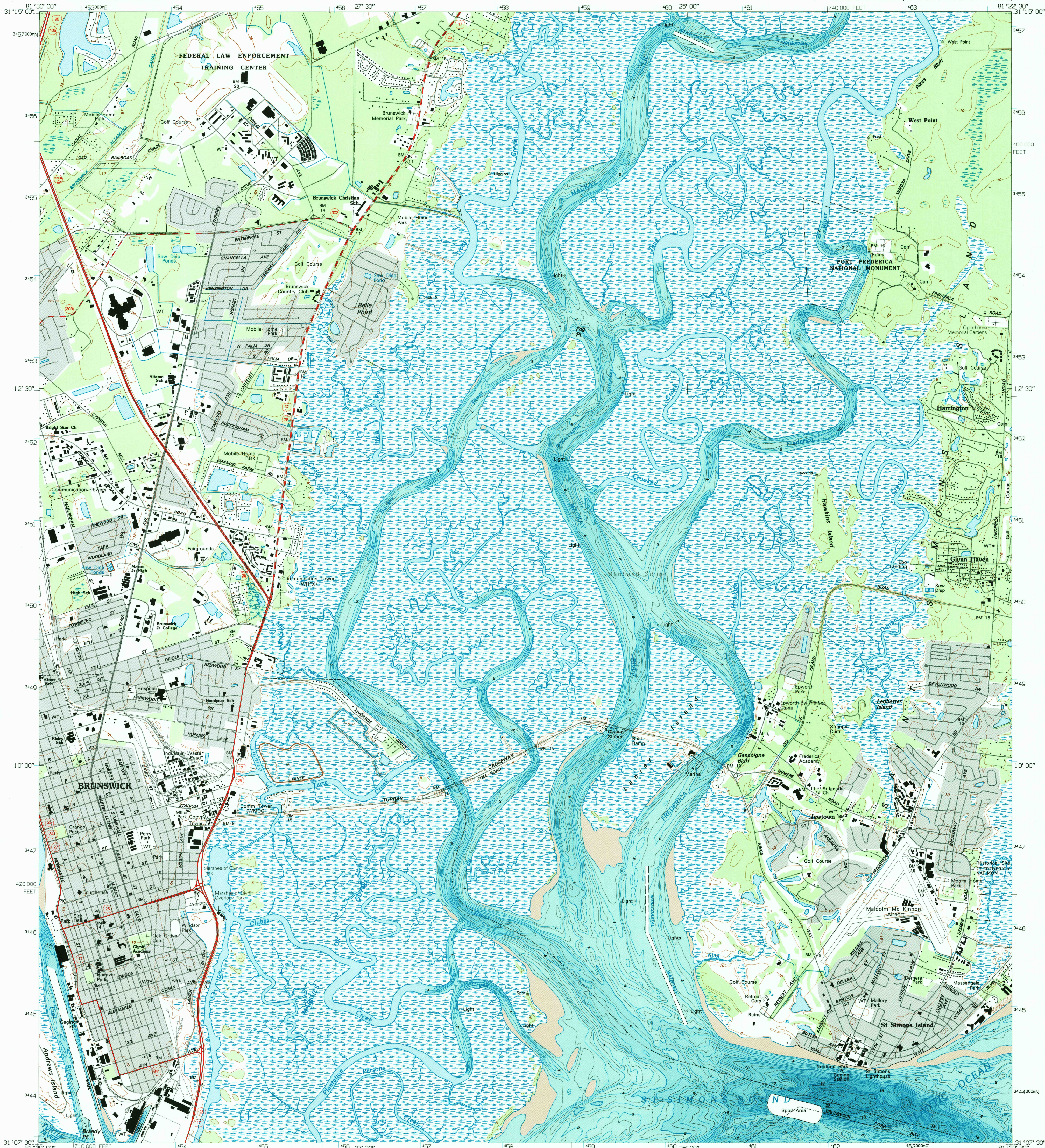


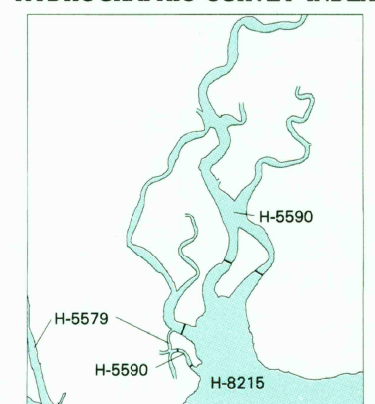
UNITED STATES  
DEPARTMENT OF THE INTERIOR  
GEOLOGICAL SURVEY

BRUNSWICK EAST QUADRANGLE  
GEORGIA-GLYNN CO.  
7.5 MINUTE SERIES (TOPOGRAPHIC-BATHYMETRIC)



Produced by the United States Geological Survey in cooperation with State of Georgia agencies. Planimetry by photogrammetric methods from imagery dated 1974. Topography by planimetric surveys 1952 and 1954. Revised from imagery dated 1993 and other sources. Field checked 1993. Map edited 1995. Bathymetry compiled by the National Ocean Service from tide-coordinated hydrographic surveys. This information is not intended for navigational purposes. Mean lower low water (dotted line) and mean high water (heavy solid line) line compiled by NOS from tide-coordinated imagery. Apparent shoreline (outer edge of vegetation) shown by light solid line. North American Datum of 1927 (NAD 27). Projection and blue 1000-meter ticks: Universal Transverse Mercator, zone 17. 10 000-foot ticks: Georgia coordinate system, east zone. North American Datum of 1983 (NAD 83) is shown by dashed corner ticks. The values of the shift between NAD 27 and NAD 83 for 7.5-minute intersections are obtainable from National Geodetic Survey NADCON software. There may be private inholdings within the boundaries of the National or State reservations shown on this map.

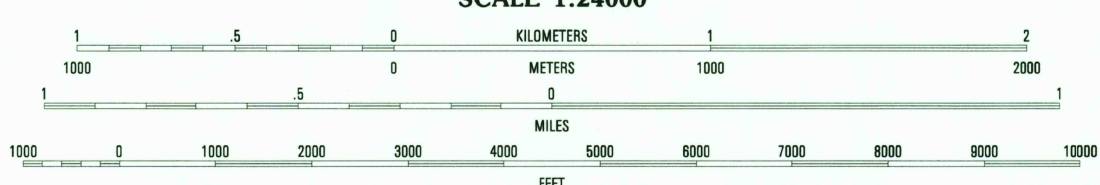
HYDROGRAPHIC SURVEY INDEX



HYDROGRAPHIC SURVEY INFORMATION

Survey Number	Survey Date	Survey Scale	Survey Line Sounding (Naut. Miles)
H-5579	1934	1:10000	02-08
H-5590	1934	1:10000	01-08
H-8215	1954	1:10000	03-10

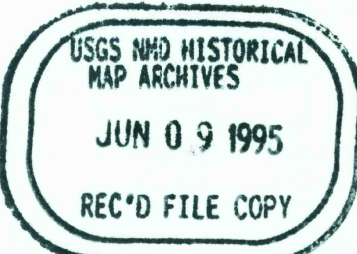
SCALE 1:24000



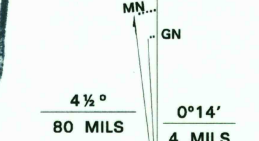
CONTOUR INTERVAL 5 FEET  
NATIONAL GEODETIC VERTICAL DATUM OF 1929  
BATHYMETRIC CONTOUR INTERVAL 1 METER WITH SUPPLEMENTARY  
0.5 METER CONTOURS-DATUM IS MEAN LOWER LOW WATER  
THE RELATIONSHIP BETWEEN THE TWO DATUMS IS VARIABLE

BASE MAP COMPLES WITH NATIONAL MAP ACCURACY STANDARDS  
BATHYMETRIC SURVEY DATA COMPLES WITH  
INTERNATIONAL HYDROGRAPHIC ORGANIZATION (IHO)  
SPECIAL PUBLICATION 44 ACCURACY STANDARDS AND/OR  
STANDARDS USED AS OF THE DATE OF THE SURVEYS

FOR SALE BY U.S. GEOLOGICAL SURVEY  
DENVER, COLORADO 80225 OR RESTON, VIRGINIA 22092  
AND NATIONAL OCEAN SERVICE, ROCKVILLE, MARYLAND 20852  
A FOLDER DESCRIBING TOPOGRAPHIC MAPS AND SYMBOLS IS AVAILABLE ON REQUEST



QUADRANGLE LOCATION



UTM GRID AND 1985 MAGNETIC NORTH  
DECLINATION AT CENTER OF SHEET

ROAD CLASSIFICATION

Primary highway hard surface	Light-duty road, hard or improved surface
Secondary highway hard surface	Unimproved road
Interstate Route	U.S. Route
	State Route

1	2	3	1 Sterling
4	5	6	2 Darien
7	8	7	3 Altamaha Sound
		8	4 Brunswick West
			5 Sea Island
			6 Dover Bluff
			7 Jekyll Island
			8

ADJOINING 7.5' QUADRANGLE NAMES

BRUNSWICK EAST, GA  
31081-B4-TB-024

1993

DMA 4746 III NW-SERIES Y845

