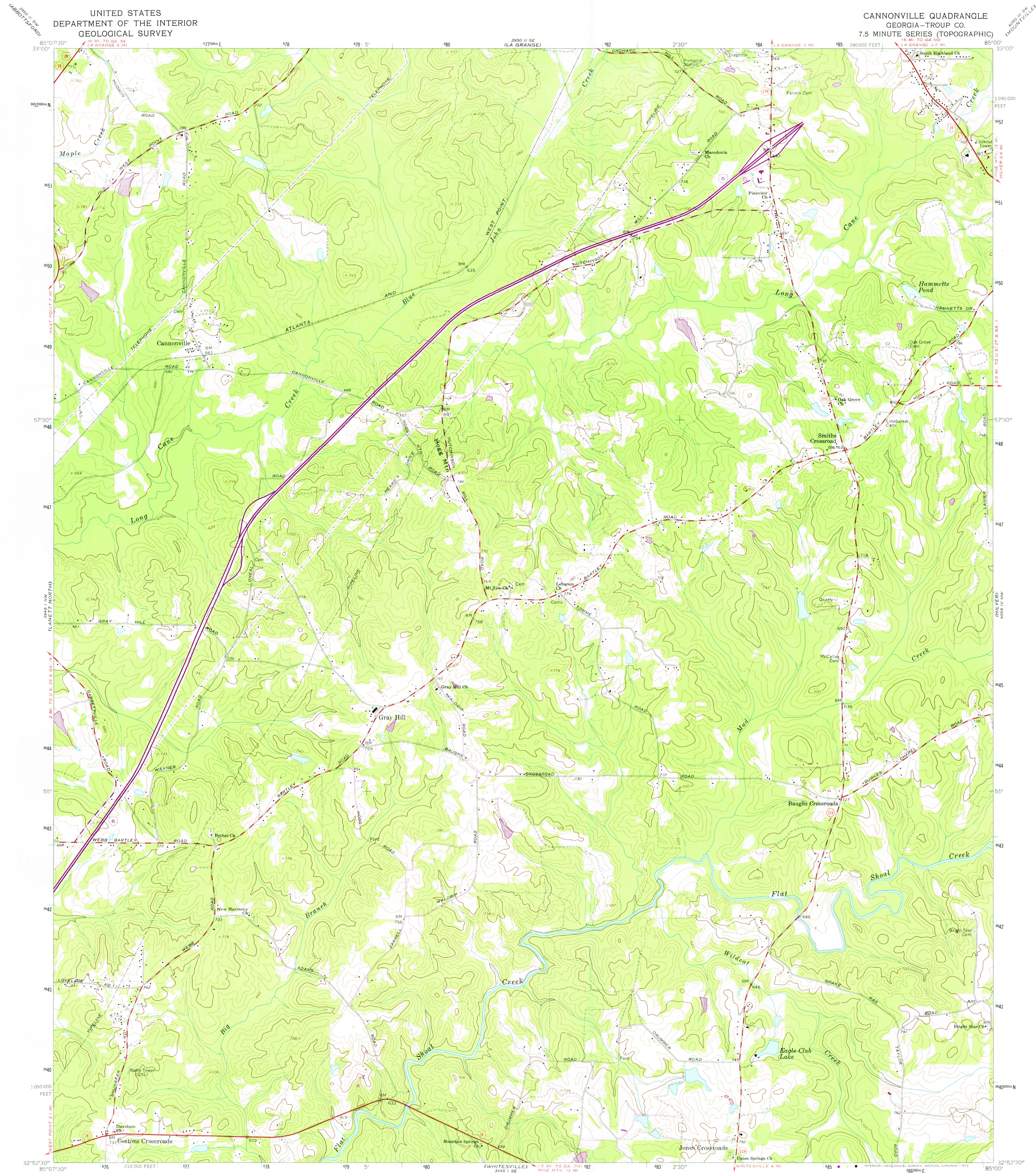


UNITED STATES  
DEPARTMENT OF THE INTERIOR  
GEOLOGICAL SURVEY

CANNONVILLE QUADRANGLE  
GEORGIA—TROUP CO.  
7.5 MINUTE SERIES (TOPOGRAPHIC)

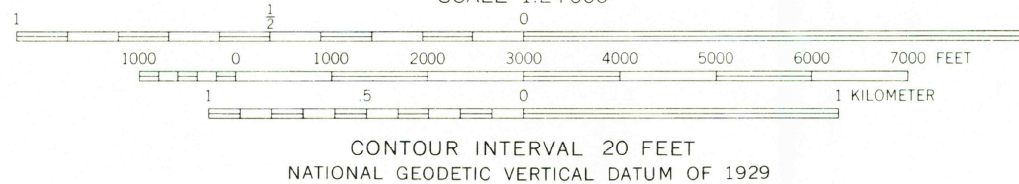
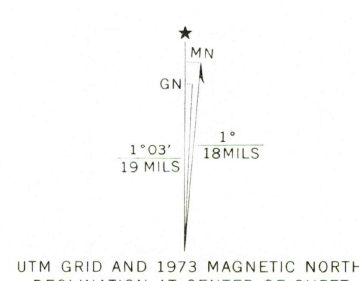


Mapped, edited, and published by the Geological Survey  
Control by USGS and USC&GS

Topography by photogrammetric methods from aerial  
photographs taken 1962. Field checked 1964  
Polyconic projection. 1927 North American datum  
10,000-foot grid based on Georgia coordinate system, west zone  
1000-meter Universal Transverse Mercator grid ticks,  
zone 16, shown in blue

Fine red dashed lines indicate selected fence and field lines where  
generally visible on aerial photographs. This information is unchecked

Revisions shown in purple compiled in cooperation with  
State of Georgia agencies from aerial photographs  
taken 1973. This information not field checked



THIS MAP COMPLIES WITH NATIONAL MAP ACCURACY STANDARDS  
FOR SALE BY U. S. GEOLOGICAL SURVEY, RESTON, VIRGINIA 22092  
A FOLDER DESCRIBING TOPOGRAPHIC MAPS AND SYMBOLS IS AVAILABLE ON REQUEST



USGS  
Historical File  
Topographic Division

CANNONVILLE, GA.  
N3252.5—W8500.7/5

1964  
PHOTOREVISED 1973  
AMS 3949 1 NE—SERIES V845

MAP 3 1/5

2840