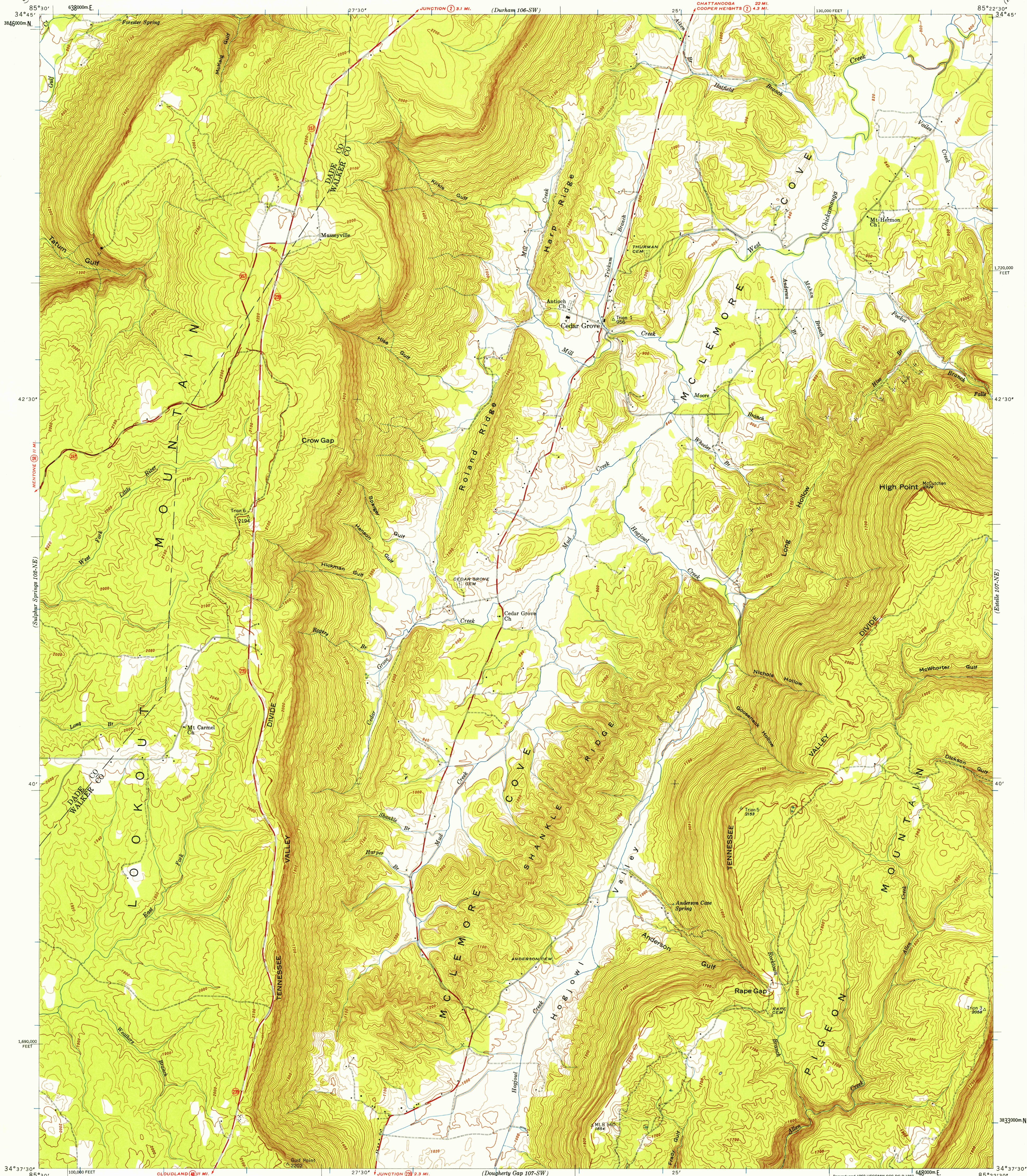


UNITED STATES  
DEPARTMENT OF THE INTERIOR  
GEOLOGICAL SURVEY

UNITED STATES  
TENNESSEE VALLEY AUTHORITY  
MAPS AND SURVEYS DIVISION

GEORGIA  
CEDAR GROVE QUADRANGLE  
107-NW



Control by USC&GS, USGS, and TVA  
Topography by USGS and TVA from aerial  
photographs by stereophotogrammetric methods  
Field examination by Tennessee Valley Authority, 1946

TRUE NORTH  
MAGNETIC NORTH  
APPROXIMATE MEAN  
DECLINATION, 1947

Scale 24,000  
1 inch = 2 miles  
1 centimeter = 2 kilometers

Contour interval 20 feet  
Occasional 10 foot contours shown by broken lines  
Datum is mean sea level

FOR SALE BY U. S. GEOLOGICAL SURVEY, WASHINGTON 25, D. C.  
AND U. S. TENNESSEE VALLEY AUTHORITY, CHATTANOOGA OR KNOXVILLE, TENN.  
A FOLDER DESCRIBING TOPOGRAPHIC MAPS AND SYMBOLS IS AVAILABLE ON REQUEST

USGS  
FILE COPY  
TOPOGRAPHIC MAP

Reproduced 1960 USCOMM CGS DC-R-1887  
Polyconic projection, 1927 North American datum  
10,000 foot grid based on Georgia (West)  
rectangular coordinate system  
1000-meter Universal Transverse Mercator  
grid ticks, Zone 16, shown in blue

CEDAR GROVE, GA.  
107-NW  
N3437.5 W8522.5/7.5  
1946

DEC 27 1950  
985  
From Col. J. H. R. R. R.