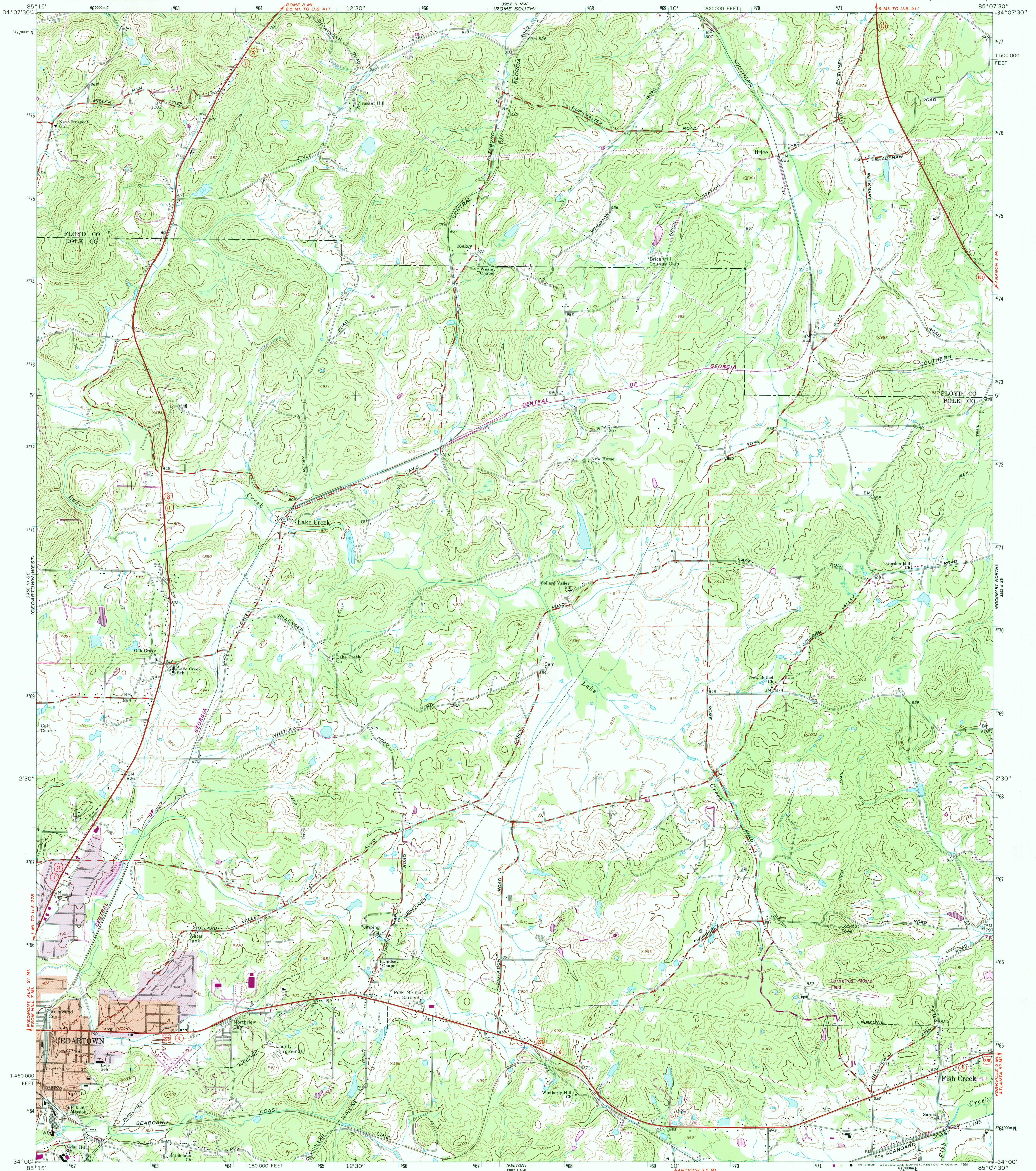


UNITED STATES
DEPARTMENT OF THE INTERIOR
GEOLOGICAL SURVEY

CEDARTOWN EAST QUADRANGLE
GEORGIA
7.5 MINUTE SERIES (TOPOGRAPHIC)



Mapped, edited, and published by the Geological Survey
Control by USGS and USC&GS

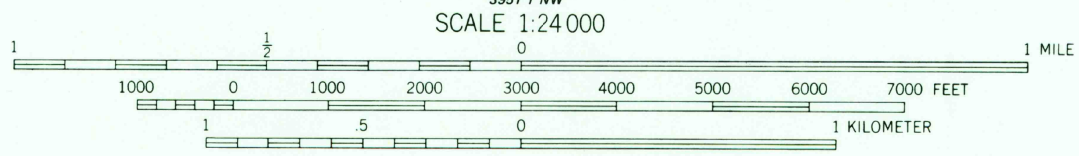
Topography by photogrammetric methods from aerial
photographs taken 1964. Field checked 1967

Polyconic projection
10,000-foot grid based on Georgia coordinate system, west zone
1000-meter Universal Transverse Mercator grid ticks,
zone 16, shown in blue. 1927 North American datum

To place on the predicted North American Datum 1983
move the projection lines 9 meters south and
5 meters west as shown by dashed corner ticks

Fine red dashed lines indicate selected fence and field lines where
generally visible on aerial photographs. This information is unchecked
Red tint indicates area in which only landmark buildings are shown

UTM GRID AND 1980 MAGNETIC NORTH
DECLINATION AT CENTER OF SHEET



CONTOUR INTERVAL 20 FEET
DOTTED LINES REPRESENT 10-FOOT CONTOURS
NATIONAL GEODETIC VERTICAL DATUM OF 1929

THIS MAP COMPLIES WITH NATIONAL MAP ACCURACY STANDARDS
FOR SALE BY U.S. GEOLOGICAL SURVEY
DENVER, COLORADO 80225, OR RESTON, VIRGINIA 22092
A FOLDER DESCRIBING TOPOGRAPHIC MAPS AND SYMBOLS IS AVAILABLE ON REQUEST

Map photorevised 1982
No major culture or drainage changes observed



ROAD CLASSIFICATION
Heavy-duty ——— Light-duty ———
Medium-duty ——— Unimproved dirt ———
U.S. Route ——— State Route ———

USGS AND HISTORICAL MAP
MAR 07 1991
REC'D FILE COPY

CEDARTOWN EAST, GA.
N3400—W8507.5/7.5
PHOTOINSPECTED 1982
1967
PHOTOREVISED 1980
DMA 3952 II SW—SERIES V845