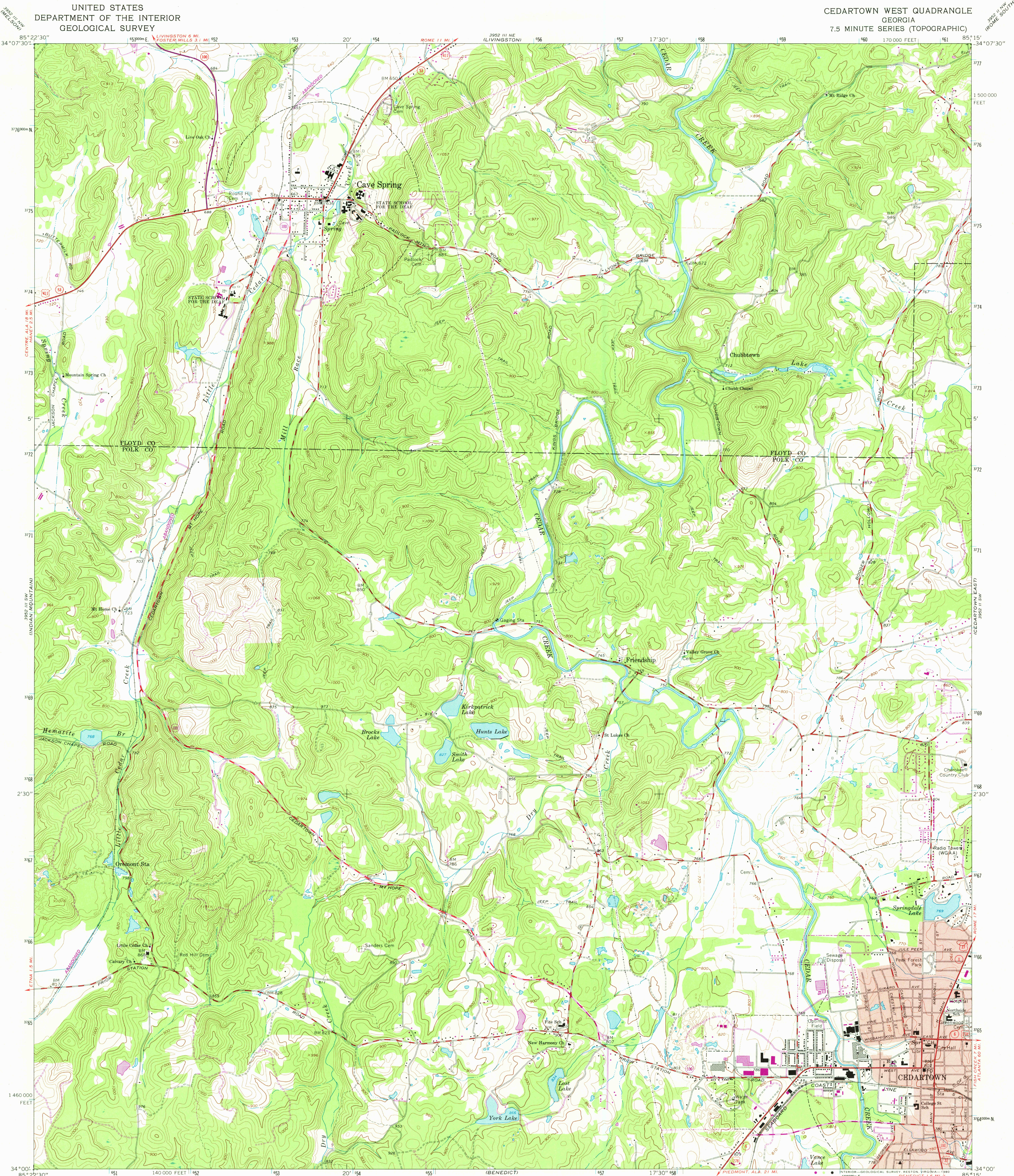


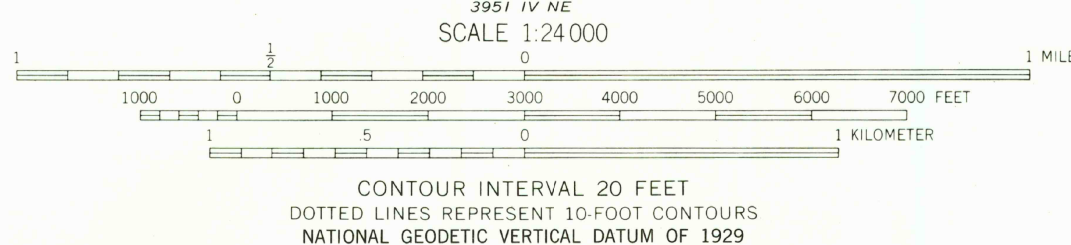
UNITED STATES
DEPARTMENT OF THE INTERIOR
GEOLOGICAL SURVEY

CEDARTOWN WEST QUADRANGLE
GEORGIA
7.5 MINUTE SERIES (TOPOGRAPHIC)



Mapped, edited, and published by the Geological Survey
Control by USGS, USC&GS, US Soil Conservation Service,
and Georgia Geodetic Survey
Topography by photogrammetric methods from aerial
photographs taken 1964. Field checked 1967
Polyconic projection
10,000-foot grid based on Georgia coordinate system, west zone
100-meter Universal Transverse Mercator grid ticks,
zone 16, shown in blue. 1927 North American datum
To place on the predicted North American Datum 1983
move the projection lines 9 meters south and
5 meters west as shown by dashed corner ticks
Fine red dashed lines indicate selected fence and field lines where
generally visible on aerial photographs. This information is unchecked
Red tint indicates area in which only landmark buildings are shown

Revisions shown in purple and woodland compiled from
aerial photographs taken 1976 and other source data
This information not field checked. Map edited 1980



ROAD CLASSIFICATION

Heavy-duty	Light-duty
Medium-duty	Unimproved dirt
U.S. Route	State Route

CEPARTOWN WEST, GA.
N3400-W8515/7.5
1967
PHOTOREVISED 1980
DMA 3952 III SE-SERIES V845

SEP 30 1980

2350