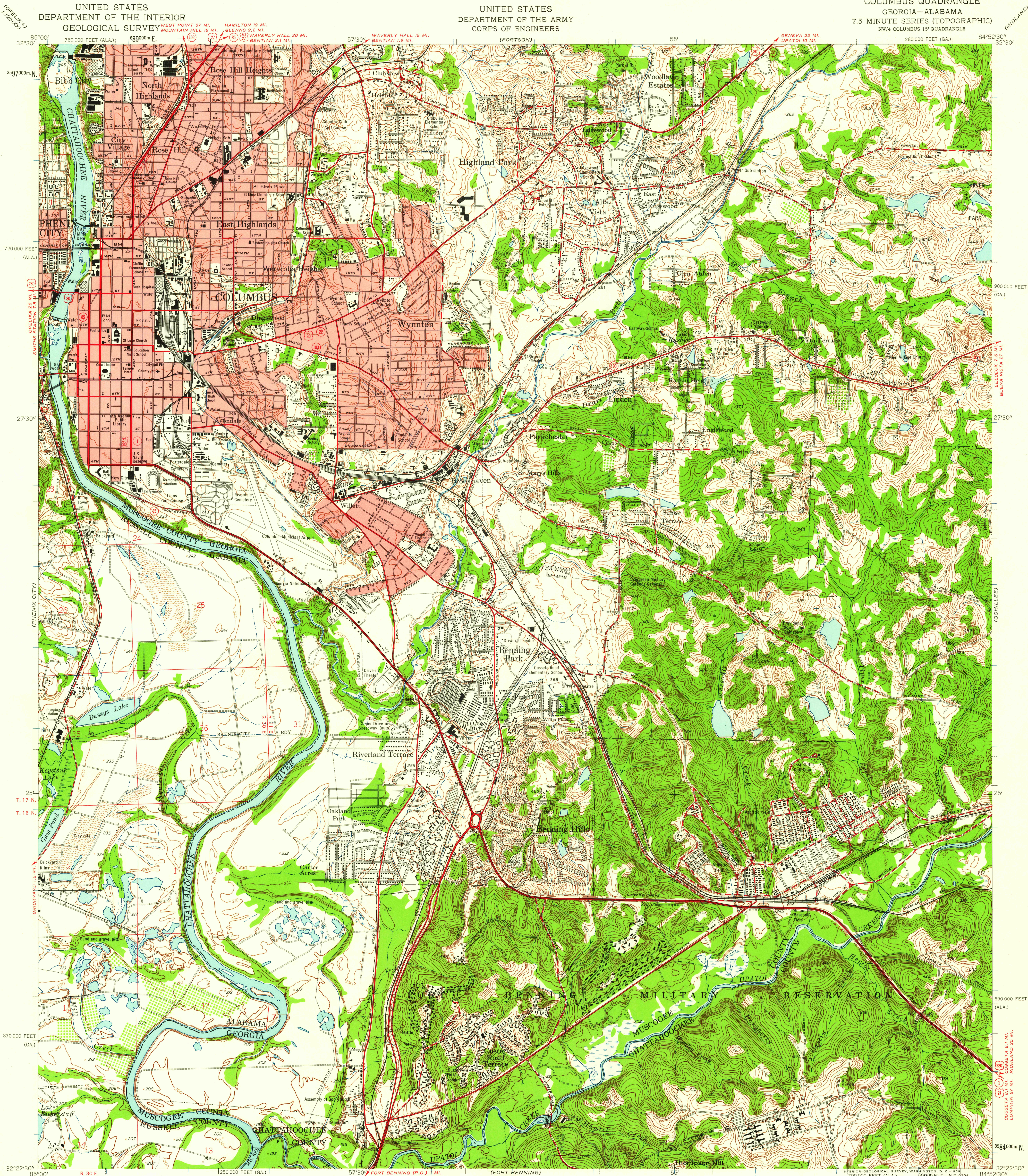


UNITED STATES  
DEPARTMENT OF THE INTERIOR  
GEOLOGICAL SURVEY

UNITED STATES  
DEPARTMENT OF THE ARMY  
CORPS OF ENGINEERS

COLUMBUS QUADRANGLE  
GEORGIA-ALABAMA  
7.5 MINUTE SERIES (TOPOGRAPHIC)  
NW/4 COLUMBUS 15' QUADRANGLE



Mapped by the Army Map Service  
Published for civil use by the Geological Survey  
Control by USGS, USC&GS, USCE, and Georgia Geodetic Survey  
Topography from aerial photographs by photogrammetric methods  
Aerial photographs taken 1945; Culture and drainage revised from  
aerial photographs taken 1953-1954. Field check 1955  
Polyconic projection. 1927 North American datum  
10,000-foot grids based on Georgia coordinate system,  
west zone, and Alabama coordinate system, east zone  
1000-meter Universal Transverse Mercator grid ticks,  
zone 16, shown in blue  
Red tint indicates areas in which only  
landmark buildings are shown  
Dashed land lines indicate approximate locations  
Unchecked elevations are shown in brown

TRUE NORTH  
MAGNETIC NORTH  
APPROXIMATE MEAN  
DECLINATION, 1955

SCALE 1:24,000  
1 1000 2000 3000 4000 5000 6000 7000 FEET  
1 KILOMETER  
CONTOUR INTERVAL 10 FEET  
DATUM IS MEAN SEA LEVEL

THIS MAP COMPLIES WITH NATIONAL MAP ACCURACY STANDARDS  
FOR SALE BY U. S. GEOLOGICAL SURVEY, WASHINGTON 25, D. C.  
A FOLDER DESCRIBING TOPOGRAPHIC MAPS AND SYMBOLS IS AVAILABLE ON REQUEST

USGS  
Historical File  
Topographic Division



ROAD CLASSIFICATION  
Heavy-duty ——— Light-duty ———  
Medium-duty ——— Unimproved dirt ———  
U. S. Route ——— State Route ———

U.S.G.S.  
FILE COPY  
TOPOGRAPHIC DIVISION

COLUMBUS, GA.—ALA.  
NW/4 COLUMBUS 15' QUADRANGLE  
N 3222.5—W 8452.5/7.5  
1955

NOV 10 1959

4105