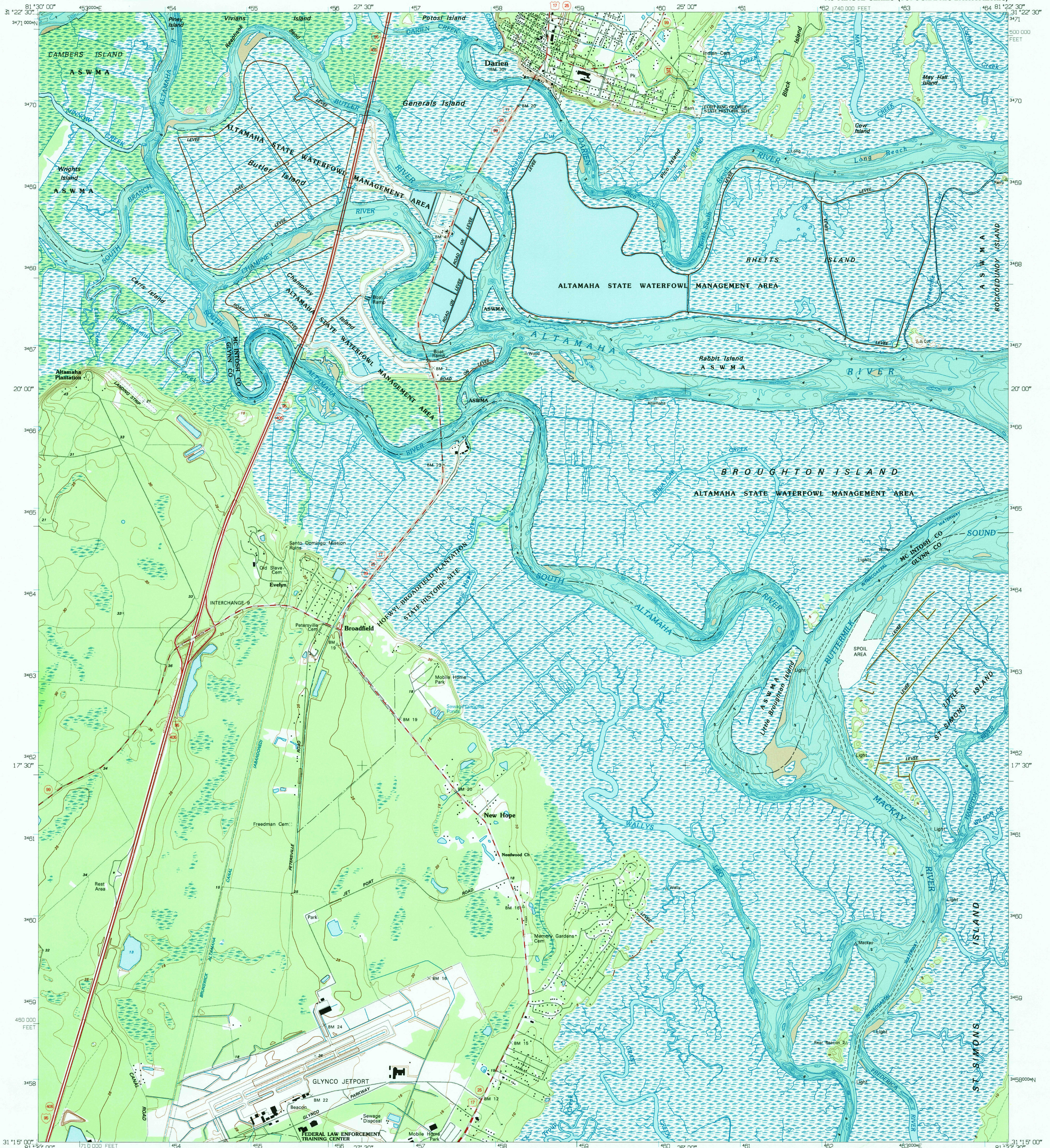


UNITED STATES
DEPARTMENT OF THE INTERIOR
GEOLOGICAL SURVEY

DARIEN QUADRANGLE
GEORGIA
7.5 MINUTE SERIES (TOPOGRAPHIC-BATHYMETRIC)



Produced by the United States Geological Survey in cooperation with State of Georgia agencies. Planimetry by photogrammetric methods from imagery dated 1974. Topography by planimetric surveys 1952. Field checked 1975. Revised from imagery dated 1993 and other sources. Field checked 1993. Map edited 1995.

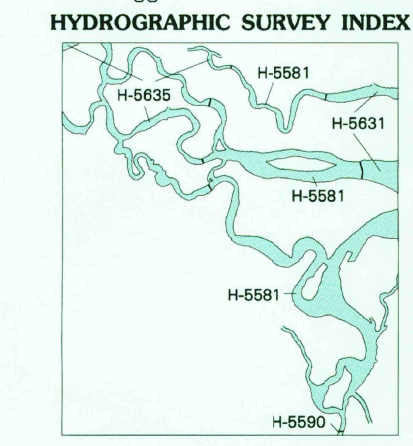
Bathymetry compiled by the National Ocean Service from tide-coordinated hydrographic survey. This information is not intended for navigational purposes.

Mean lower low water (dotted) line and mean high water (heavy solid) line compiled by NOS from tide-coordinated imagery. Apparent shoreline (outer edge of vegetation) shown by light solid line.

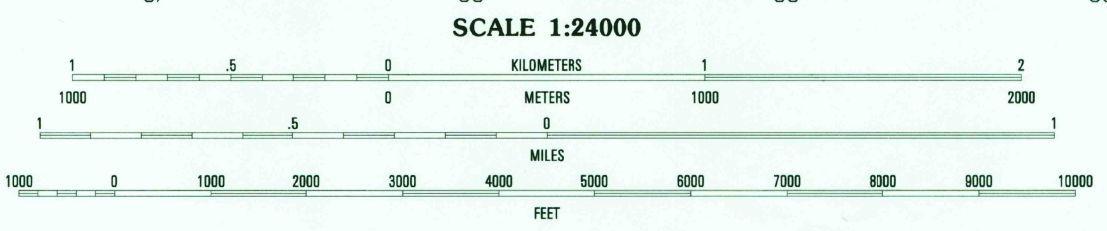
North American Datum of 1927 (NAD 27). Projection and blue 1000-meter ticks: Universal Transverse Mercator, zone 17. 10 000-foot ticks: Georgia coordinate system, east zone.

North American Datum of 1983 (NAD 83) is shown by dashed corner ticks. The values of the shift between NAD 27 and NAD 83 for 7.5-minute intersections are obtainable from National Geodetic Survey NADCON software.

There may be private inholdings within the boundaries of the National or State reservations shown on this map.

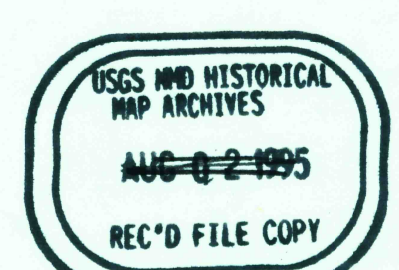


HYDROGRAPHIC SURVEY INFORMATION			
Survey Number	Survey Date	Survey Scale	Survey Line Spacing (Naut. Miles)
H-5636	1934	1:10,000	02-03
H-5637	1934	1:10,000	01-05
H-5638	1934	1:10,000	02-07
H-5639	1934	1:10,000	02-08



CONTOUR INTERVAL 5 FEET
NATIONAL GEODETIC VERTICAL DATUM OF 1929
BATHYMETRIC CONTOUR INTERVAL 1 METER WITH SUPPLEMENTARY
0.5 METER CONTOURS-DATUM IS MEAN LOWER LOW WATER
THE RELATIONSHIP BETWEEN THE TWO DATUMS IS VARIABLE

BASE MAP COMPLIES WITH NATIONAL MAP ACCURACY STANDARDS
BATHYMETRIC SURVEY DATA COMPLIES WITH
INTERNATIONAL HYDROGRAPHIC ORGANIZATION (IHO)
SPECIAL PUBLICATION 44 ACCURACY STANDARDS AND/OR
STANDARDS USED AS OF THE DATE OF THE SURVEY
FOR SALE BY U.S. GEOLOGICAL SURVEY
DENVER, COLORADO 80225 OR RESTON, VIRGINIA 22092
AND NATIONAL OCEAN SERVICE, ROCKVILLE, MARYLAND 20852
A FOLDER DESCRIBING TOPOGRAPHIC MAPS AND SYMBOLS IS AVAILABLE ON REQUEST



ROAD CLASSIFICATION			
Primary highway	Light-duty road, hard or hard surface	Improved surface	
Secondary highway	Unimproved road		
Interstate Route	U.S. Route	State Route	

ADJOINING 7.5' QUADRANGLE NAMES			
1	2	3	1 Cox
4	5	6	2 Ridgeville
7	8	9	3 Doboy Sound
10	11	12	4 Sterling
13	14	15	5 Altamaha Sound
16	17	18	6 Brunswick West
19	20	21	7 Brunswick East
22	23	24	8 Sea Island

DARIEN, GA
31081-C4-TB-024
1993

