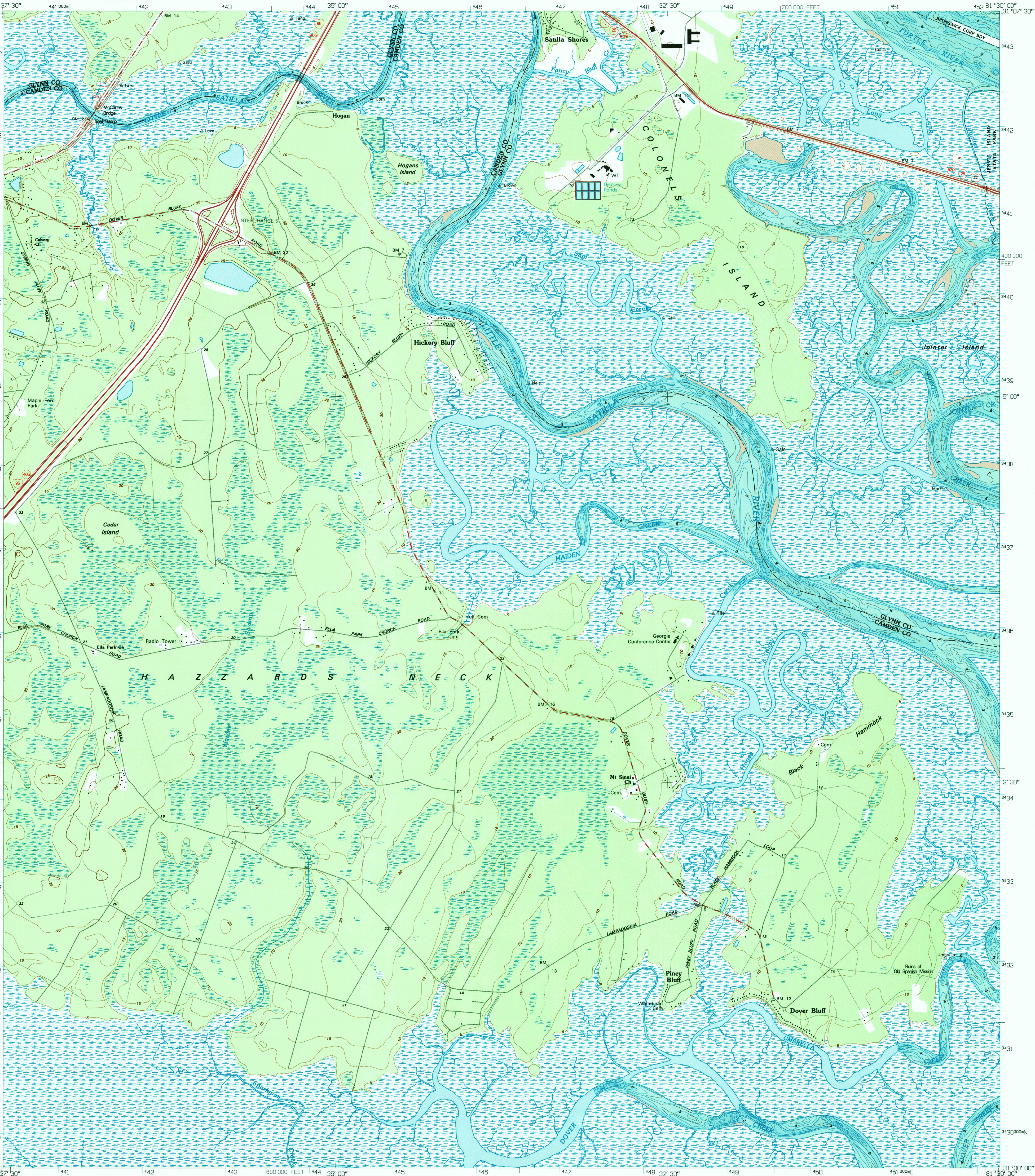


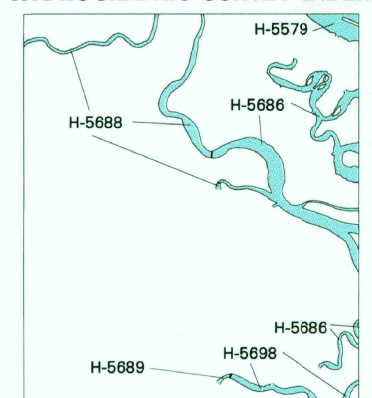
UNITED STATES
DEPARTMENT OF THE INTERIOR
GEOLOGICAL SURVEY

DOVER BLUFF QUADRANGLE
GEORGIA
7.5 MINUTE SERIES (TOPOGRAPHIC-BATHYMETRIC)



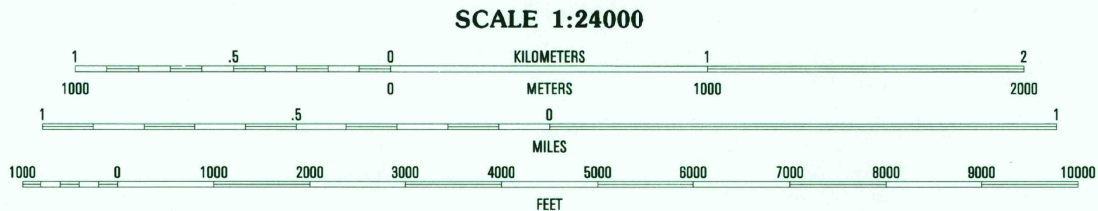
Produced by the United States Geological Survey in cooperation with State of Georgia agencies
Planimetry by photogrammetric methods from imagery dated 1974
Topography by planimetric surveys 1961. Revised from imagery dated 1993 and other sources. Field checked 1993. Map edited 1995
Bathymetry compiled by the National Ocean Service from tide-coordinated hydrographic surveys
This information is not intended for navigational purposes
Mean lower low water (dotted) line and mean high water (heavy solid) line compiled by NOS from tide-coordinated aerial photographs. Apparent shoreline (outer edge of vegetation) shown by light solid line
North American Datum of 1927 (NAD 27). Projection and blue 1000-meter ticks: Universal Transverse Mercator, zone 17
10 000-foot ticks: Georgia coordinate system, east zone
North American Datum of 1983 (NAD 83) is shown by dashed corner ticks. The values of the shift between NAD 27 and NAD 83 for 7.5-minute intersections are obtainable from National Geodetic Survey NADCON software
There may be private inholdings within the boundaries of the National or State reservations shown on this map

HYDROGRAPHIC SURVEY INDEX



HYDROGRAPHIC SURVEY INFORMATION

Survey Number	Survey Date	Survey Scale	Survey Line Spacing (Feet)
H-5679	1934	1:10,000	02-06
H-5680	1935	1:10,000	02-07
H-5681	1936	1:10,000	02-04
H-5682	1935	1:10,000	02-13
H-5683	1934-35	1:10,000	01-10

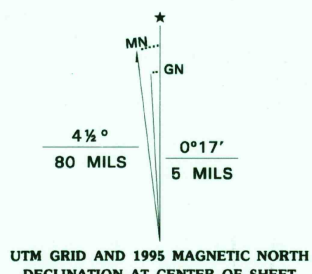


CONTOUR INTERVAL 5 FEET
NATIONAL GEODETIC VERTICAL DATUM OF 1929
BATHYMETRIC CONTOUR INTERVAL 1 METER WITH SUPPLEMENTARY
0.5 METER CONTOURS-DATUM IS MEAN LOWER LOW WATER
THE RELATIONSHIP BETWEEN THE TWO DATUMS IS VARIABLE

BASE MAP COMPLIES WITH NATIONAL MAP ACCURACY STANDARDS
BATHYMETRIC SURVEY DATA COMPLIES WITH
INTERNATIONAL HYDROGRAPHIC ORGANIZATION (IHO)
SPECIAL PUBLICATION 44 ACCURACY STANDARDS AND/OR
STANDARDS USED AS OF THE DATE OF THE SURVEY
FOR SALE BY U.S. GEOLOGICAL SURVEY
DENVER, COLORADO 80225 OR RESTON, VIRGINIA 22092
AND NATIONAL OCEAN SERVICE, ROCKVILLE, MARYLAND 20852
A FOLDER DESCRIBING TOPOGRAPHIC MAPS AND SYMBOLS IS AVAILABLE ON REQUEST



QUADRANGLE LOCATION



ROAD CLASSIFICATION
Primary highway
hard surface
Secondary highway
hard surface
Light-duty road, hard or
improved surface
Unimproved road
Interstate Route
U.S. Route
State Route

1	2	3	1
4	5	6	2
6	7	8	3

1 Blades
2 Brunswick West
3 Brunswick East
4 Waverly
5 Jekyll Island
6 Woodbine
7 Kingsland NE
8 Cumberland Island North

ADJOINING 7.5' QUADRANGLE NAMES

DOVER BLUFF, GA
31081-A5-TB-024

1993

DMA 4446 II SE - SERIES V845

USGS 1940 HISTORICAL
MAP ARCHIVES
JUN 0 9 1995
REC'D FILE COPY

