

(Shades of 101-NE)

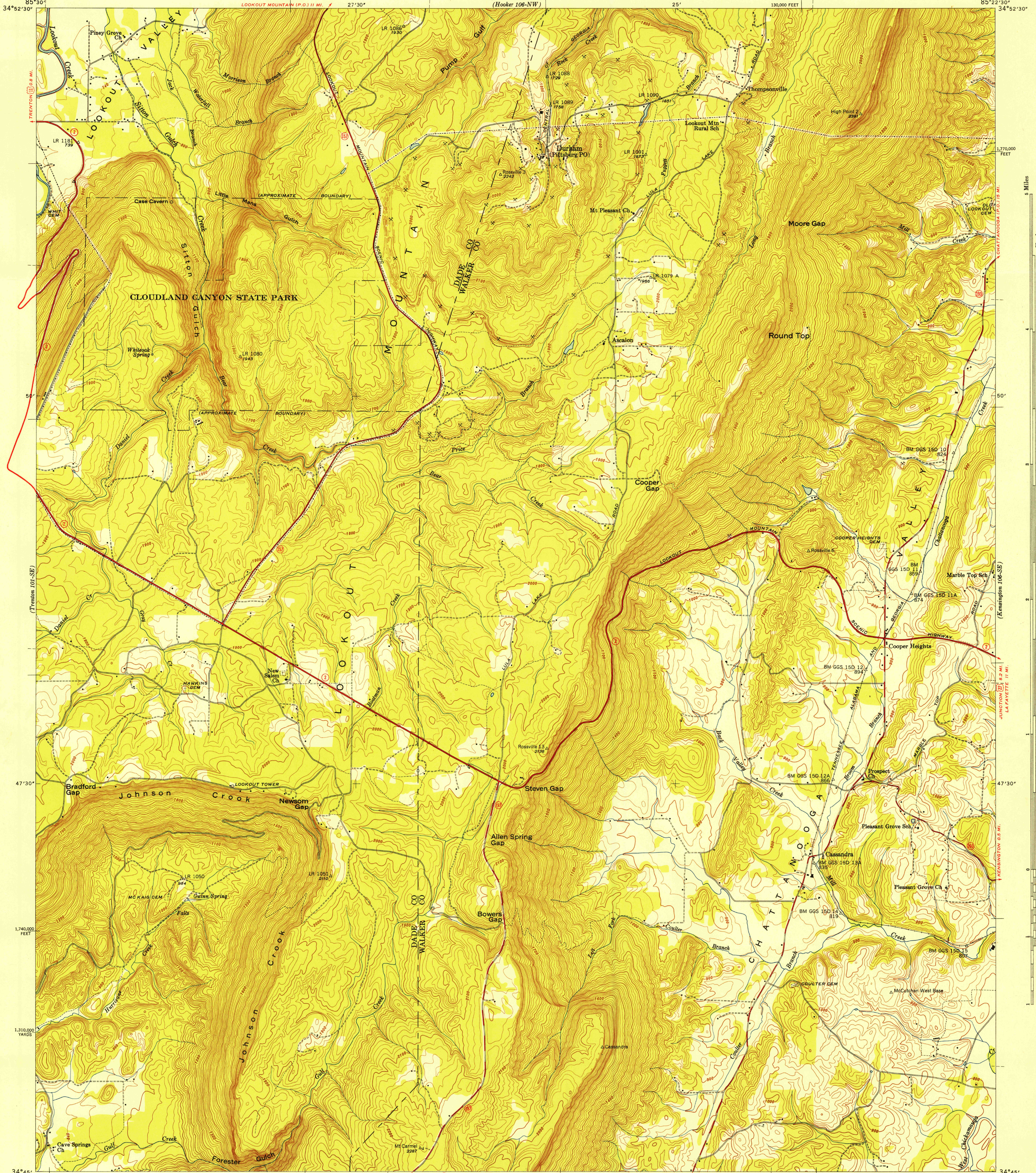
UNITED STATES
DEPARTMENT OF THE INTERIOR
GEOLOGICAL SURVEY

UNITED STATES
TENNESSEE VALLEY AUTHORITY
MAPS AND SURVEYS DIVISION

U. S. G. S.
FILE COPY
Inspection and Editing

GEORGIA
DURHAM QUADRANGLE
106-SW

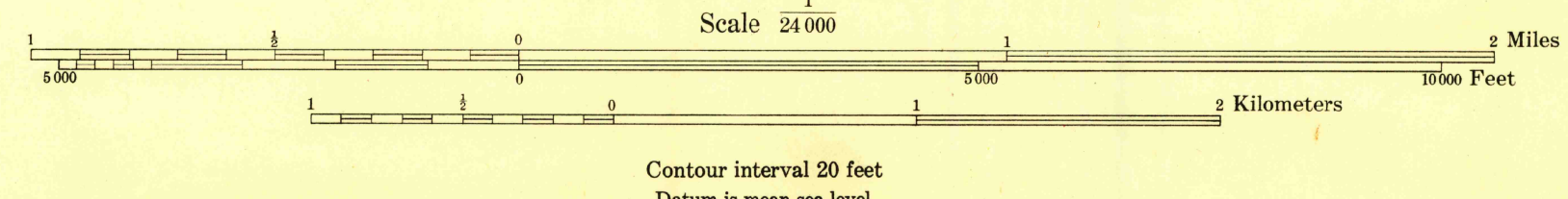
(Port Oglethorpe 106-NE)



(Gadsden Springs 102-NE)

Control by USC&GS, USGS, GGS, and TVA
Topography by Geological Survey from aerial
photographs by stereophotogrammetric methods
Field examination by Tennessee Valley Authority, 1946
Maps distributed by the Geological Survey

TRUE NORTH
MAGNETIC NORTH
APPROXIMATE MEAN
DECLINATION, 1947



Contour interval 20 feet
Datum is mean sea level

USGS
Historical File
Topographic Division

Reproduced by the U. S. Coast and Geodetic Survey 1947
Polyconic projection. 1927 North American datum
10,000 foot grid based on Georgia (West)
rectangular coordinate system
5,000 yard grid based on U. S. zone system, C

ROUTES USUALLY TRAVELED
HARD, IMPERVIOUS SURFACES
OTHER SURFACE IMPROVEMENTS
U. S. ROUTE
STATE ROUTE

DURHAM, GA.
106-SW
Edition of 1947
N3445-W8522.5/7.5

U. S. G. S.
FILE COPY
Inspection and Editing

JUN 23 1947

(Fiddle 102-NE)