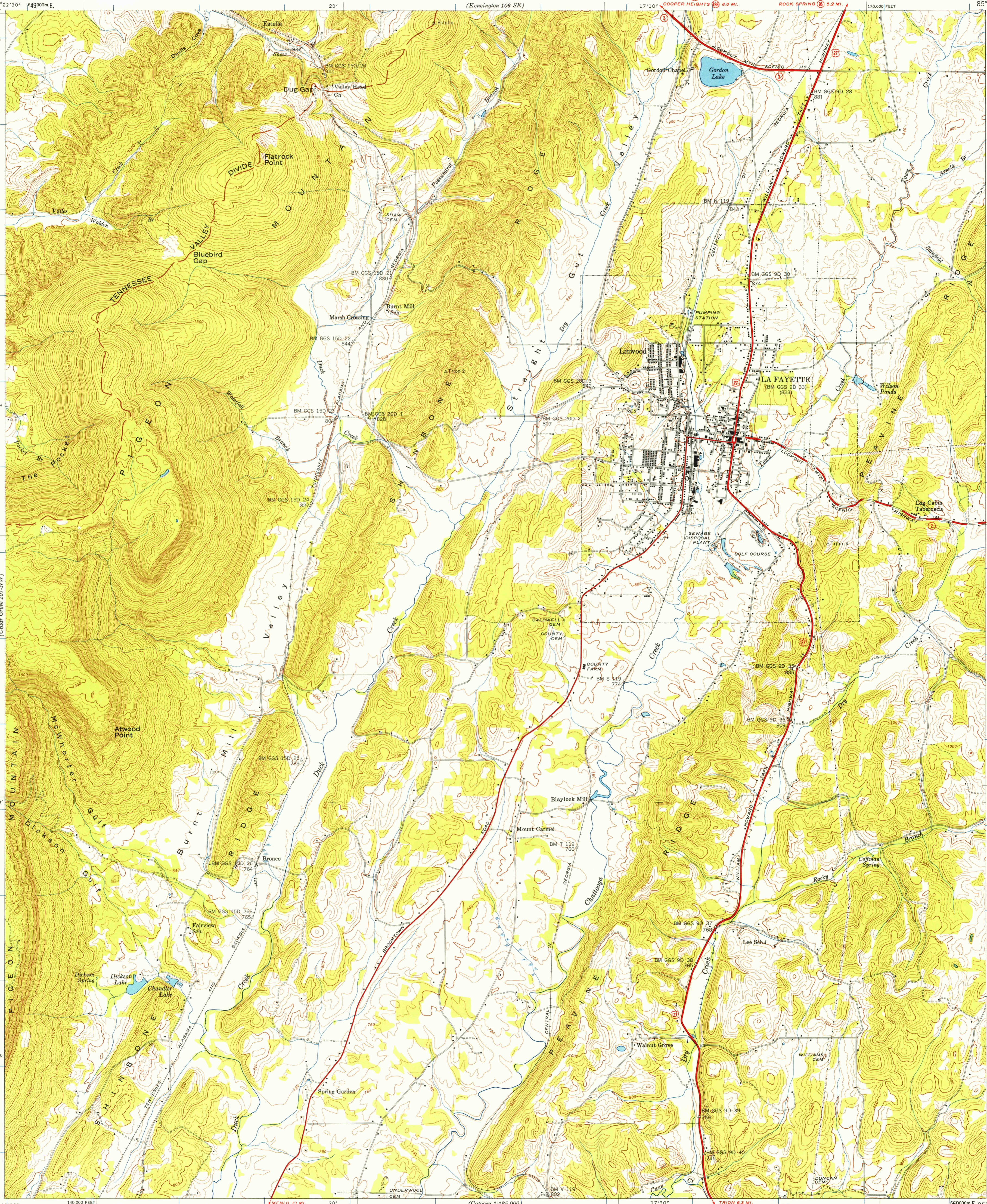


UNITED STATES
DEPARTMENT OF THE INTERIOR
GEOLOGICAL SURVEY

UNITED STATES
TENNESSEE VALLEY AUTHORITY
MAPS AND SURVEYS DIVISION

GEORGIA
(WALKER COUNTY)
ESTELLE QUADRANGLE
107-NE



Control by USC&GS, USGS, and GGS
Topography by USGS and TVA from aerial
photographs by stereophotogrammetric methods
Field examination by Tennessee Valley Authority, 1946

TRUE NORTH
MAGNETIC NORTH
APPROXIMATE MEAN
DECLINATION, 1947

Scale 24,000
5000 0 5000 10000 Feet
1 0 1 Kilometers
Contour interval 20 feet
Occasional 10 foot contours shown by broken lines
Datum is mean sea level

FOR SALE BY U. S. GEOLOGICAL SURVEY, WASHINGTON 25, D. C.
AND U. S. TENNESSEE VALLEY AUTHORITY, CHATTANOOGA OR KNOXVILLE, TENN.
A FOLDER DESCRIBING TOPOGRAPHIC MAPS AND SYMBOLS IS AVAILABLE ON REQUEST

USGS
Historical File
Topographic Division

USGS
FILE COPY
TOPOGRAPHIC DIVISION

Reproduced 1960 USCOMM CGS DC R 1852
Polyconic projection, 1927 North American datum
10,000 foot grid based on Georgia (West)
rectangular coordinate system
1000-meter Universal Transverse Mercator
grid ticks, Zone 16, shown in blue
ROUTES USUALLY TRAVELED
HARD, IMPERVIOUS SURFACES
OTHER SURFACE IMPROVEMENTS
U. S. ROUTE
STATE ROUTE

ESTELLE, GA.
107-NE
N3437.5 W8515/7.5
1946

985