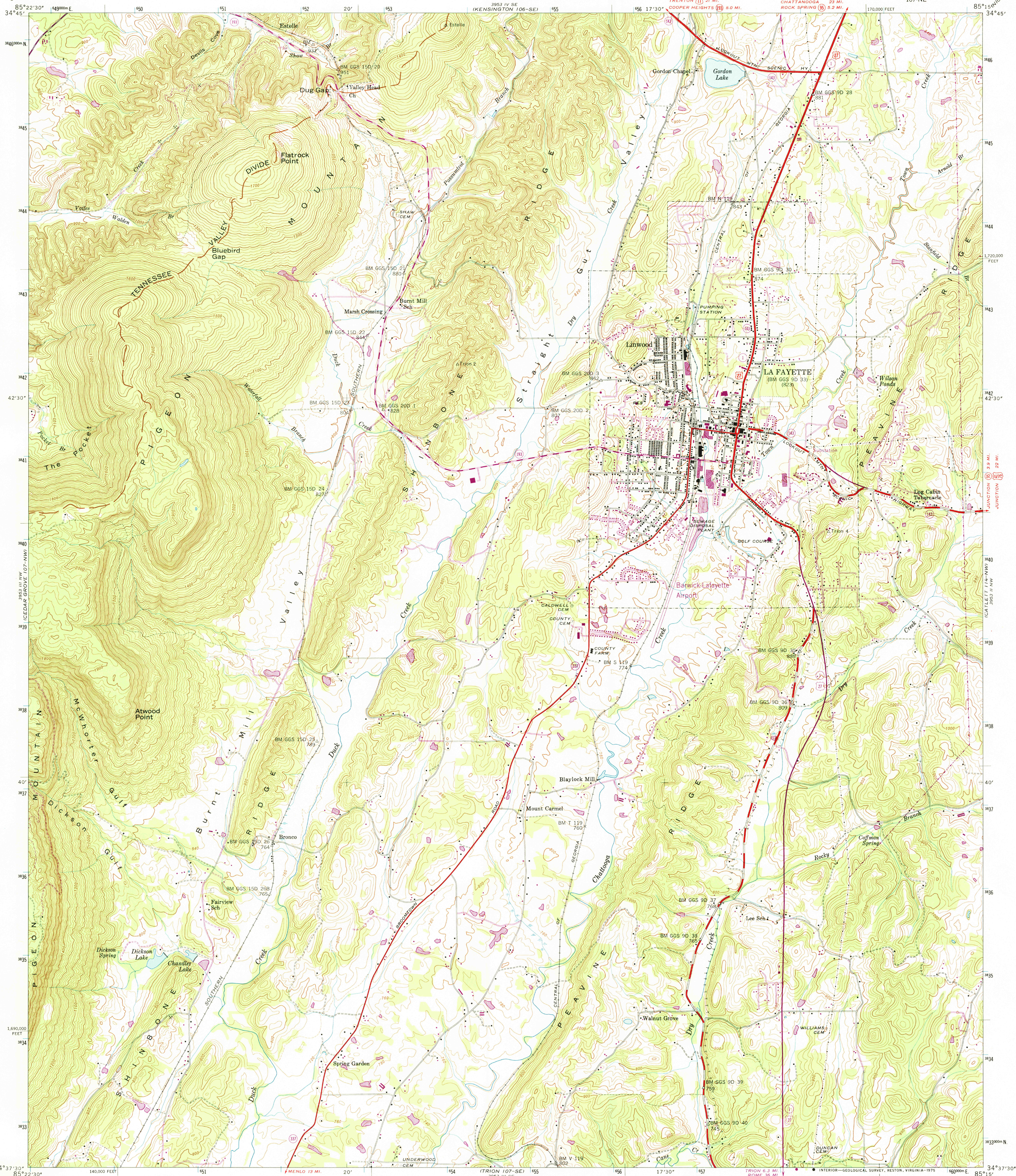


UNITED STATES
DEPARTMENT OF THE INTERIOR
GEOLOGICAL SURVEY

UNITED STATES
TENNESSEE VALLEY AUTHORITY
MAPS AND SURVEYS DIVISION

GEORGIA
(WALKER COUNTY)
ESTELLE QUADRANGLE
107-NE



Control by USC&GS, USGS, and GGS
Topography by USGS and TVA from aerial
photographs by stereophotogrammetric methods
Field examination by Tennessee Valley Authority, 1946
Revisions shown in purple compiled in cooperation with
State of Georgia agencies from aerial photographs
taken 1972. This information not field checked

UTM GRID and 1972 MAGNETIC NORTH
DECLINATION AT CENTER OF SHEET

SCALE 1:24,000
1 1000 0 1000 2000 3000 4000 5000 6000 7000 FEET
1 1 2 3 4 5 6 7 8 9 10 KILOMETER
Contour interval 20 feet
Occasional 10 foot contours shown by broken lines
NATIONAL GEODETIC VERTICAL DATUM OF 1929
FOR SALE BY U.S. GEOLOGICAL SURVEY, RESTON, VIRGINIA 22092
AND U.S. TENNESSEE VALLEY AUTHORITY, CHATTANOOGA, TENN. 37401 OR KNOXVILLE, TENN. 37902.
A FOLDER DESCRIBING TOPOGRAPHIC MAPS AND SYMBOLS IS AVAILABLE ON REQUEST



USGS
Historical File
Topographic Division

ESTELLE, GA. FEB 6 1975
107-NE
N3437.5 W8515.7.5
PHOTOREVISED 1972
AMS 3953 III NE-SERIES V845

2330