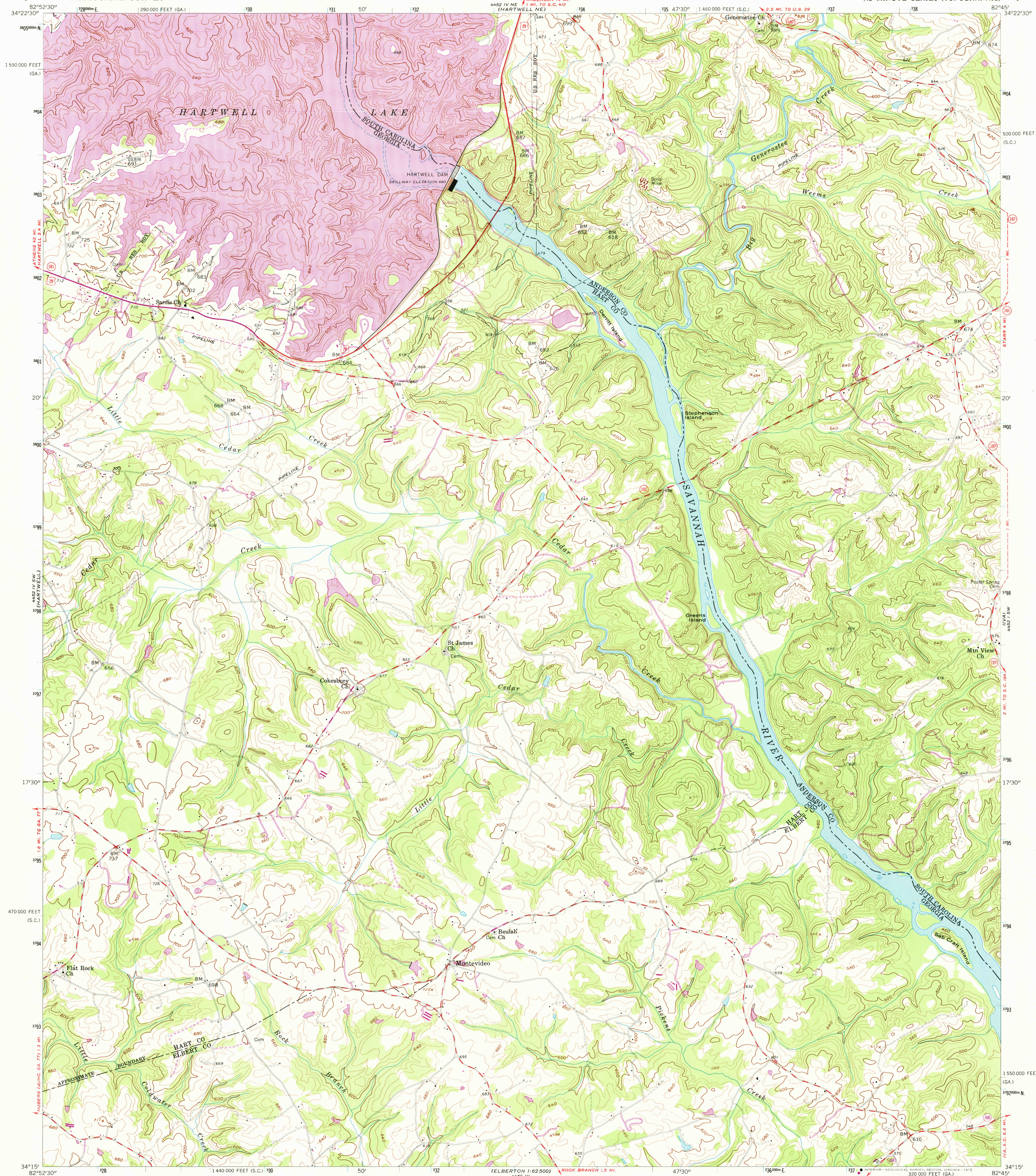
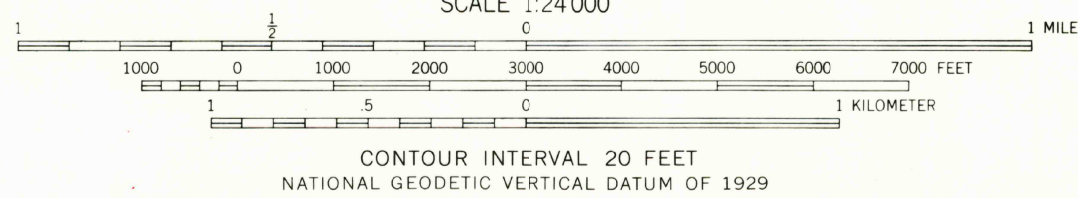
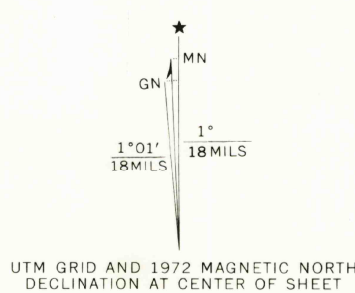


UNITED STATES
DEPARTMENT OF THE INTERIOR
GEOLOGICAL SURVEY

HARTWELL DAM QUADRANGLE
GEORGIA—SOUTH CAROLINA
7.5 MINUTE SERIES (TOPOGRAPHIC)



Mapped, edited, and published by the Geological Survey
Control by USGS, USC&GS, and USCE
Topography from aerial photographs by photogrammetric methods
Aerial photographs taken 1955. Field check 1959
Polyconic projection. 1927 North American datum
10,000-foot grids based on Georgia coordinate system, east zone,
and South Carolina coordinate system, north zone
1000-meter Universal Transverse Mercator grid ticks,
zone 17, shown in blue
Fine red dashed lines indicate selected fence and field lines
visible on aerial photographs. This information is unchecked
Reservation boundary from maps by U. S. Corps of Engineers
Revisions shown in purple compiled in cooperation with
State of Georgia agencies from aerial photographs
taken 1972. This information not field checked



THIS MAP COMPLIES WITH NATIONAL MAP ACCURACY STANDARDS
FOR SALE BY U. S. GEOLOGICAL SURVEY, RESTON, VIRGINIA 22092
A FOLDER DESCRIBING TOPOGRAPHIC MAPS AND SYMBOLS IS AVAILABLE ON REQUEST

ROAD CLASSIFICATION	
Heavy-duty	Light-duty
Medium-duty	Unimproved dirt
U. S. Route	State Route



HARTWELL DAM, GA.—S. C.
N 3415—W 8245/7.5

1959
PHOTOREVISED 1972
AMS 4452 IV SE—SERIES V845

USGS
Historical File
Topographic Division