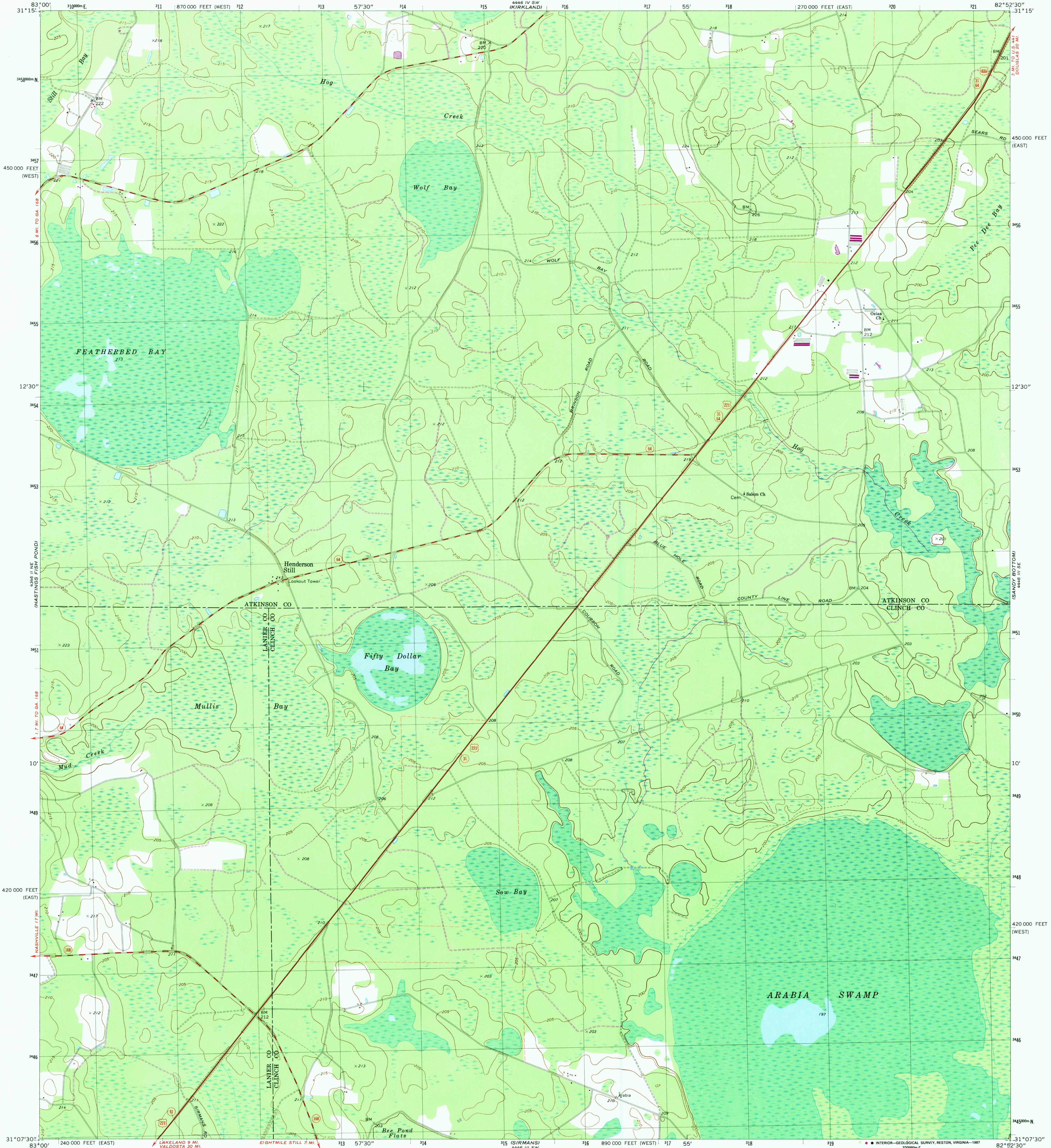
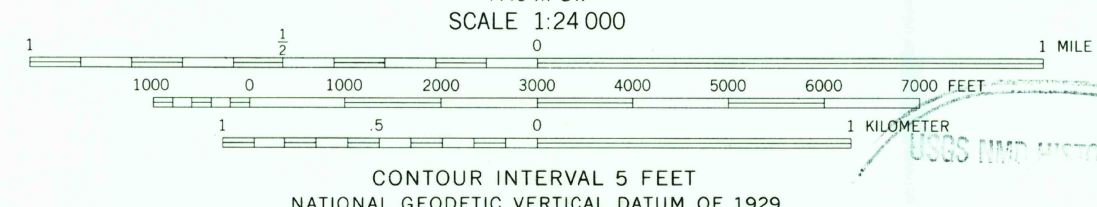
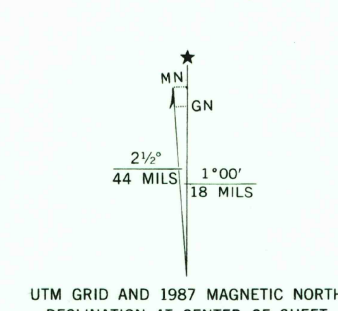


UNITED STATES
DEPARTMENT OF THE INTERIOR
GEOLOGICAL SURVEY

HENDERSON STILL QUADRANGLE
GEORGIA
7.5 MINUTE SERIES (TOPOGRAPHIC)



Mapped, edited, and published by the Geological Survey
Control by USGS, NOS/NOAA, and Georgia Geodetic Survey
Topography by photogrammetric methods from aerial photographs
taken 1971. Field checked 1972. Map edited 1978
Projection: Georgia coordinate system, east zone
(transverse Mercator)
10,000-foot grid ticks based on Georgia coordinate
system, east and west zones
1000-meter Universal Transverse Mercator grid, zone 17
1927 North American datum
To place on the predicted North American Datum 1983
move the projection lines 18 meters south and
13 meters west as shown by dashed corner ticks
Fine red dashed lines indicate selected fence and field lines where
generally visible on aerial photographs. This information is unchecked



ROAD CLASSIFICATION
Primary highway, hard surface
Secondary highway, hard surface
Light-duty road, hard or improved surface
Unimproved road
Interstate Route
U. S. Route
State Route

THIS MAP COMPLIES WITH NATIONAL MAP ACCURACY STANDARDS
FOR SALE BY U. S. GEOLOGICAL SURVEY
DENVER, COLORADO 80225, OR RESTON, VIRGINIA 22092
A FOLDER DESCRIBING TOPOGRAPHIC MAPS AND SYMBOLS IS AVAILABLE ON REQUEST

HENDERSON STILL, GA.
31082-88-TF-024

1972
PHOTOREVISED 1987
DMA 4446 III NW-SERIES V845